



Test Report

The fire resistance performance of two timber, single acting single door assemblies when tested in accordance with BS EN 1634-1:2014+A1:2018.

Project ID 20250328-003109

Report ID TR20250328-003109

Revision A

Issue Date 22 August 2025

Prepared For Exitex UK
St Johns Chamber
Love Street
Chester
CHI 1QN



21542

Cairnmuir House, Cairnmuir Road,
East Kilbride, Glasgow G74 4GY
+44 (0)1355 433 122
info@uktestcert.com
uktestcert.com
Approved Body No: 8526

**Trusted
to ensure.**

Change History

Issue Date	Revision	Created by	Authorised by	Description of Change
22/08/2025	A	RG	NS	Initial Issue

Signatories

	
<p>Prepared by Robert Grant* Technical Officer</p>	<p>Authorised by Nathan Small* Senior Technical Officer</p>

*For and on behalf of United Kingdom Testing and Certification.

Table of Contents

Cover Page	1
Change History	2
Signatories	2
1 Executive Summary	5
1.1 Specimen Summary	5
1.2 Specimen Verification	5
1.3 Specimen Installation and Fixity	5
1.4 Specimen Conditioning	5
1.5 Instruction to Test	5
1.6 Sampling	6
1.7 Summary of Expression of Results	7
2 Pre-test Examination	8
2.1 Operability Test	8
2.2 Self-Closing Test	8
2.3 Closing Force Measurement	8
2.4 Gap Measurements	9
3 Test Specimen Drawings	13
4 Technical Schedule	20
4.1 Specimen A	20
4.2 Specimen B	27
4.3 Supporting Construction	34
5 Specimen Photographs	37
6 Test Procedure	38
6.1 Ambient Temperature	38

6.2	Heating Conditions	38
6.3	Pressure Conditions	38
6.4	Unexposed Surface Temperature	38
6.5	Radiation	38
6.6	Deflection	39
6.7	Observations	41
6.8	Test Images	43
7	On-going Implications	47
7.1	Limitations	47
7.2	Accuracy of Results	47
7.3	European Group of Organisations for Fire Testing (EGOLF)	47
8	Detailed Expression of Results	48
8.1	Specimen A	48
8.2	Specimen B	50
9	Figures	52
10	Tables	57
Appendix A	Sample Report	65

1 Executive Summary

1.1 Specimen Summary

Specimen A and B had overall nominal dimensions of 1000 mm wide by 2400 mm high, incorporating a single door leaf with overall dimensions of 930 mm wide by 2360 mm high by 54 mm thick. The door leaf was formed from a particle board core, and had 7 mm thick hardwood lippings/edge banding to all four edges. The door leaf was hung in a hardwood frame on four steel hinges.

1.2 Specimen Verification

United Kingdom Testing and Certification carried out a comprehensive survey to verify the information provided by the Test Sponsor. This included verifying the materials, dimensions, and manufacturing methodologies of the test specimens, wherever possible. Refer to page 20 for full details of this survey.

1.3 Specimen Installation and Fixity

Specimen A was installed into the test construction by United Kingdom Testing and Certification. The specimen was installed such that the door leaf opened towards the heating conditions at the request of the Test Sponsor. The specimen was unlatched and unbolted prior to the commencement of the test at the request of the Test Sponsor.

Specimen B was installed into the test construction by United Kingdom Testing and Certification. The specimen was installed such that the door leaf opened away from the heating conditions at the request of the Test Sponsor. The specimen was unlatched and unbolted prior to the commencement of the test at the request of the test sponsor.

1.4 Specimen Conditioning

The specimen's storage, construction, and test preparation took place in the test laboratory over a total, combined time of five days. Throughout this period, both the temperature and the humidity of the laboratory were measured and recorded as being within a range of from 11.7 °C to 13.2 °C and 56.3 % to 61.1% respectively.

1.5 Instruction to Test

The test was conducted on 14 May 2025 at the request of the Test Sponsor. The test was witnessed by Mark Throne, a representative of the Test Sponsor.

1.6 Sampling

A representative of BM Trada apart of the element group sample selected the following components of the tested specimen:

Component	Sampling date	Sampling report reference
Specimen A – Single Doorset	25/03/25	SC24295T
Specimen B – Single Doorset	25/03/25	SC24295T

Refer to page 65 for the copies of the sampling reports.

1.7 Summary of Expression of Results

Summary of results per the criterion specified in BS EN 1634-1:2014+A1:2018 § 11 for each specimen is presented in the table below. A detailed breakdown of the results for each specimen is contained within Section 8 on Page 48.

Specimen ID	Integrity		Insulation			Radiation
			I_1	I_2	Discrete area	
A	Sustained Flaming	32 minutes*	N/a	32 minutes*	32 minutes*	32 minutes*
	Gap Gauge	32 minutes*				
	Cotton Pad	32 minutes*				
B	Sustained Flaming	31 minutes	N/a	31 minutes	31 minutes	32 minutes*
	Gap Gauge	32 minutes				
	Cotton Pad	31 minutes				

*The test was discontinued after a period of 32 minutes.

2 Pre-test Examination

2.1 Operability Test

Specimen A was opened from fully closed to at least 90° and back again 25 times prior to the commencement of the test in accordance with BS EN 16034:2014 § A.2.2.

Specimen B was opened from fully closed to at least 90° and back again 25 times prior to the commencement of the test in accordance with BS EN 16034:2014 § A.2.2.

2.2 Self-Closing Test

Specimen A was opened to 30° ± 2°, held for 20 ± 2 seconds and released without shock and allowed to close at a maximum mean average speed of 300 mm/s to ensure that a closed position was achieved in accordance with BS EN 16034:2014 § A.4.1.

Specimen B was opened to 30° ± 2°, held for 20 ± 2 seconds and released without shock and allowed to close at a maximum mean average speed of 300 mm/s to ensure that a closed position was achieved in accordance with BS EN 16034:2014 § A.4.1.

2.3 Closing Force Measurement

The door closing forces were measured and recorded three times. The results are presented below:

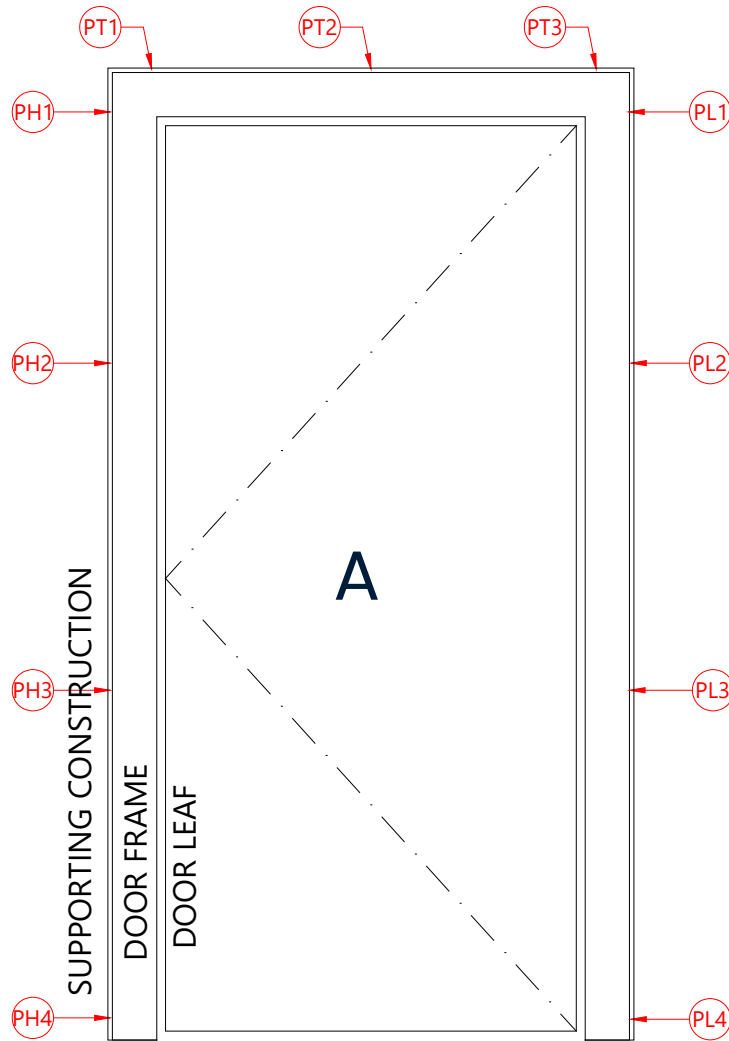
Measurement	Maximum Recorded Force (N)	Distance from Pivot to Measurement Location (m)	Moment (Nm)
Closing Force Specimen A	41.0	0.800	32.80
Opening Force Specimen A	72.2	0.800	57.76
Closing Force Specimen B	43.6	0.800	34.88
Opening Force Specimen B	73.8	0.800	59.04

2.4 Gap Measurements

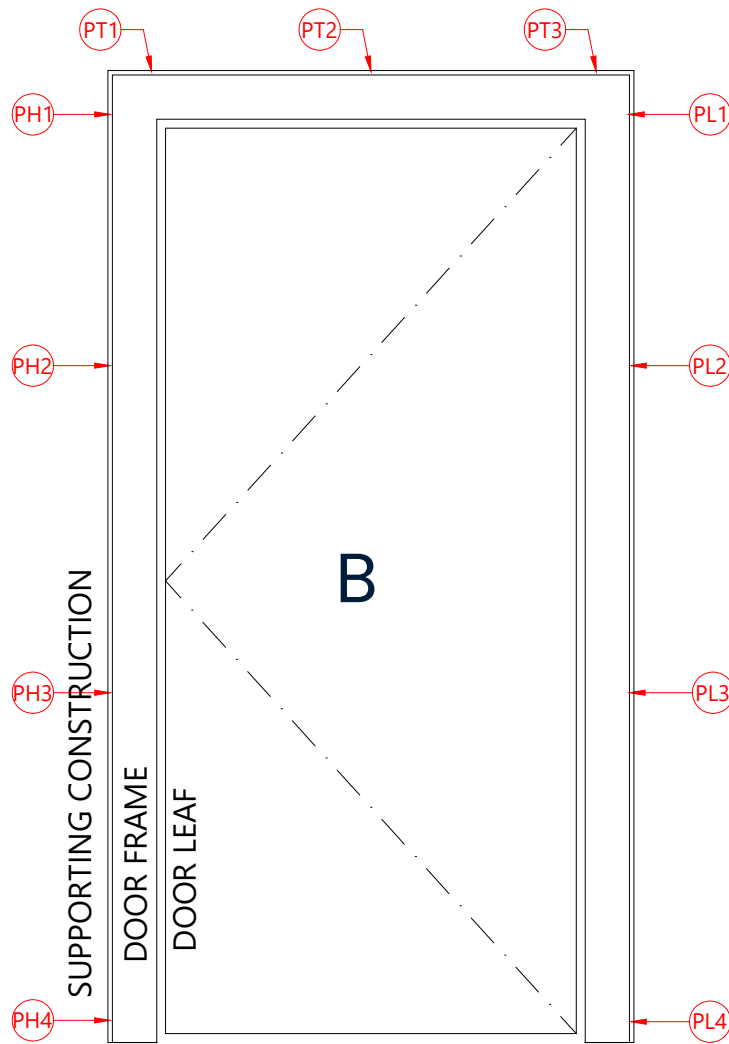
All measurements are in millimeters (mm) unless stated otherwise, include structural opening perimeter gaps.

2.4.1 Structural Perimeter gaps

The gaps between the perimeter of the frame and the supporting construction were measured prior to the commencement of the test. This was measured from the annotated locations in the figure below. The measurements were taken from the Primary face.



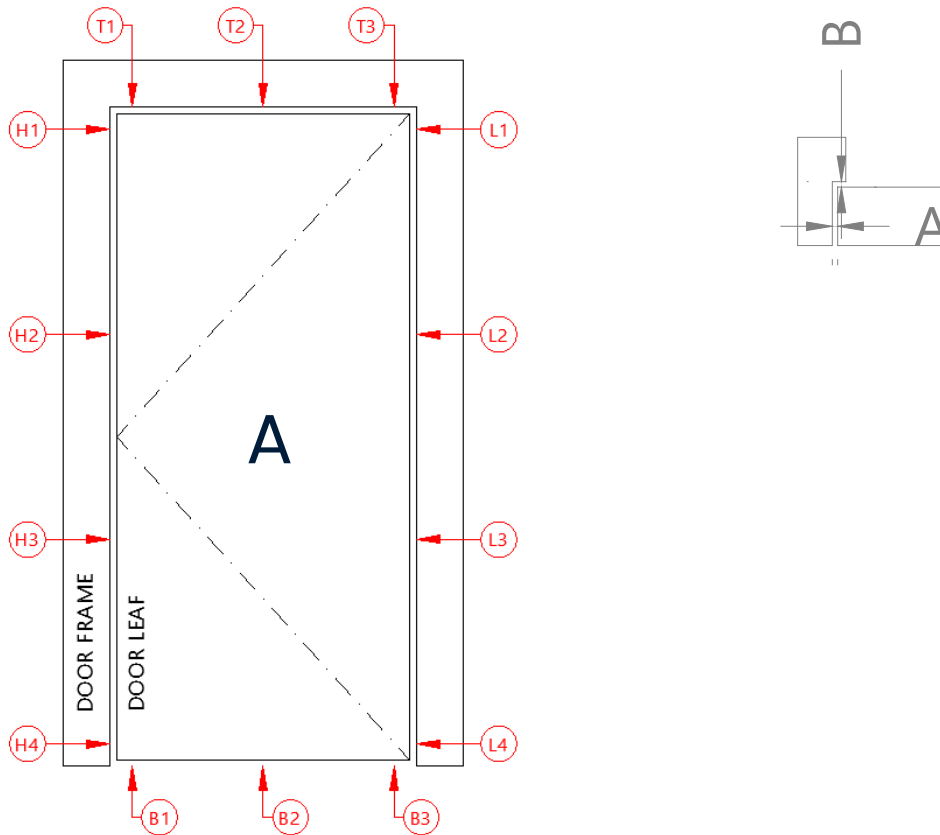
Perimeter Gaps							
PH1	12.3	X	PL1	11.44	X	PT1	7.56
PH2	9.96		PL2	11.52		PT2	6.69
PH3	8.28		PL3	10.4		PT3	5.4
PH4	8.65		PL4	6			



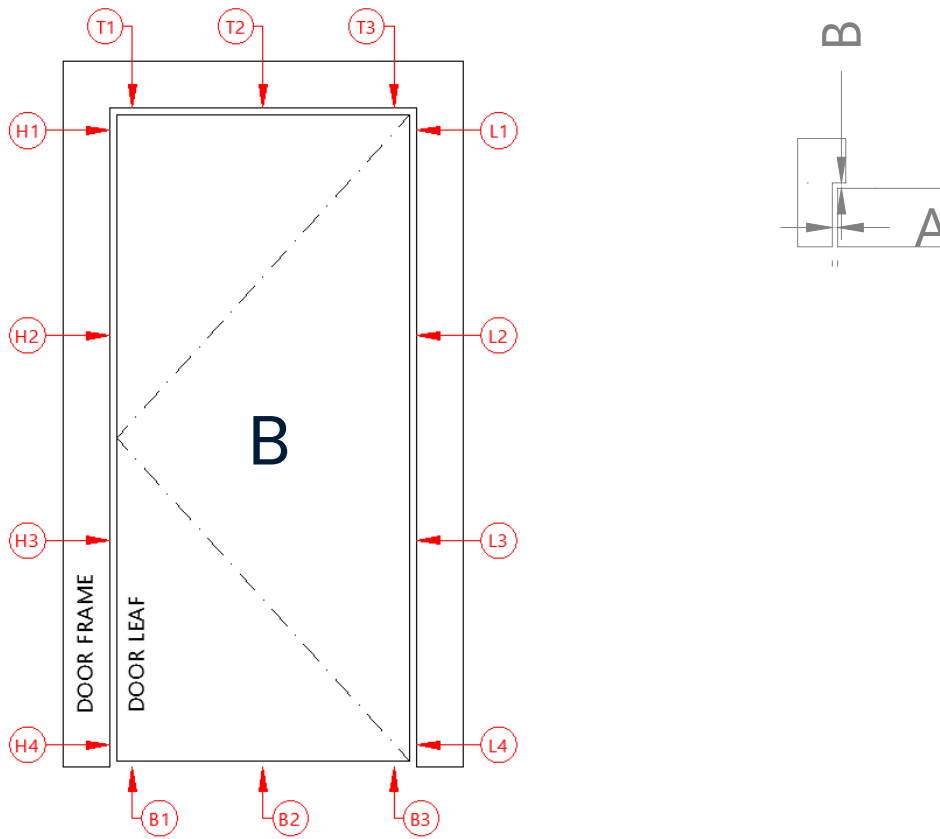
Perimeter Gaps							
PH1	12.11	X	PL1	10.54	X	PT1	5.36
PH2	9.56		PL2	10.75		PT2	5.42
PH3	7.86		PL3	11.12		PT3	5.8
PH4	7.31		PL4	10.45			

2.4.2 Doorset Perimeter gaps

The gaps between the perimeter of the door leaf and the frame were measured prior to the commencement of the test.



Hanging Stile	A	B	Closing Stile	A	B
H1	3.1	0.1	L1	3.7	0.2
H2	3.8	0.1	L2	3.4	0.2
H3	3.0	0.1	L3	2.9	0.1
H4	3.1	0.1	L4	3.4	0.1
Mean	3.3	X	Mean	3.3	X
Max	3.8		Max	3.7	
Min	3.0		Min	2.9	
Max Permitted	5.5		Max Permitted	5.5	
Top Edge	A	B	Bottom Edge	A	
T1	3.4	0.1	B1	4.9	X
T2	3.8	0.1	B2	3.8	
T3	3.8	0.1	B3	3.5	
Mean	3.6	X	Mean	4.1	
Max	3.8		Max	4.9	
Min	3.4		Min	3.5	
Max Permitted	5.7		Max Permitted	6.5	



Hanging Stile	A	B	Closing Stile	A	B
H1	3.2	0.1	L1	3.0	0.1
H2	3.2	0.1	L2	3.1	0.1
H3	2.9	0.1	L3	3.2	0.1
H4	3.2	0.1	L4	3.2	0.1
Mean	3.1	X	Mean	3.1	X
Max	3.2		Max	3.2	
Min	2.9		Min	3.0	
Max Permitted	5.2		Max Permitted	5.2	
Top Edge	A	B	Bottom Edge	A	
T1	3.0	0.1	B1	4.8	X
T2	3.1	0.1	B2	4.9	
T3	3.2	0.1	B3	5.4	
Mean	3.1	X	Mean	5.1	
Max	3.2		Max	5.4	
Min	3.0		Min	4.8	
Max Permitted	5.1		Max Permitted	7.2	

3 Test Specimen Drawings

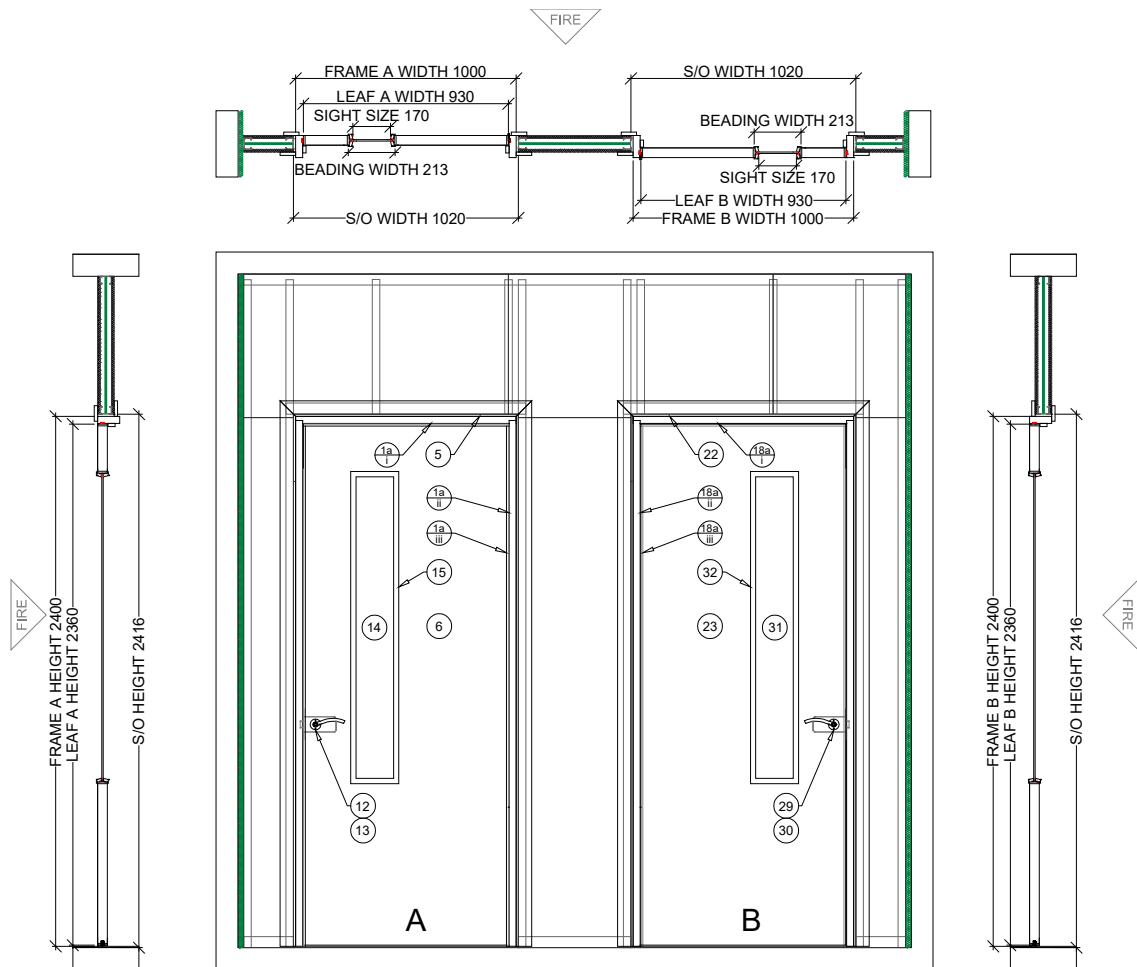


Figure 1 - General arrangement of test construction viewed from the unexposed surface

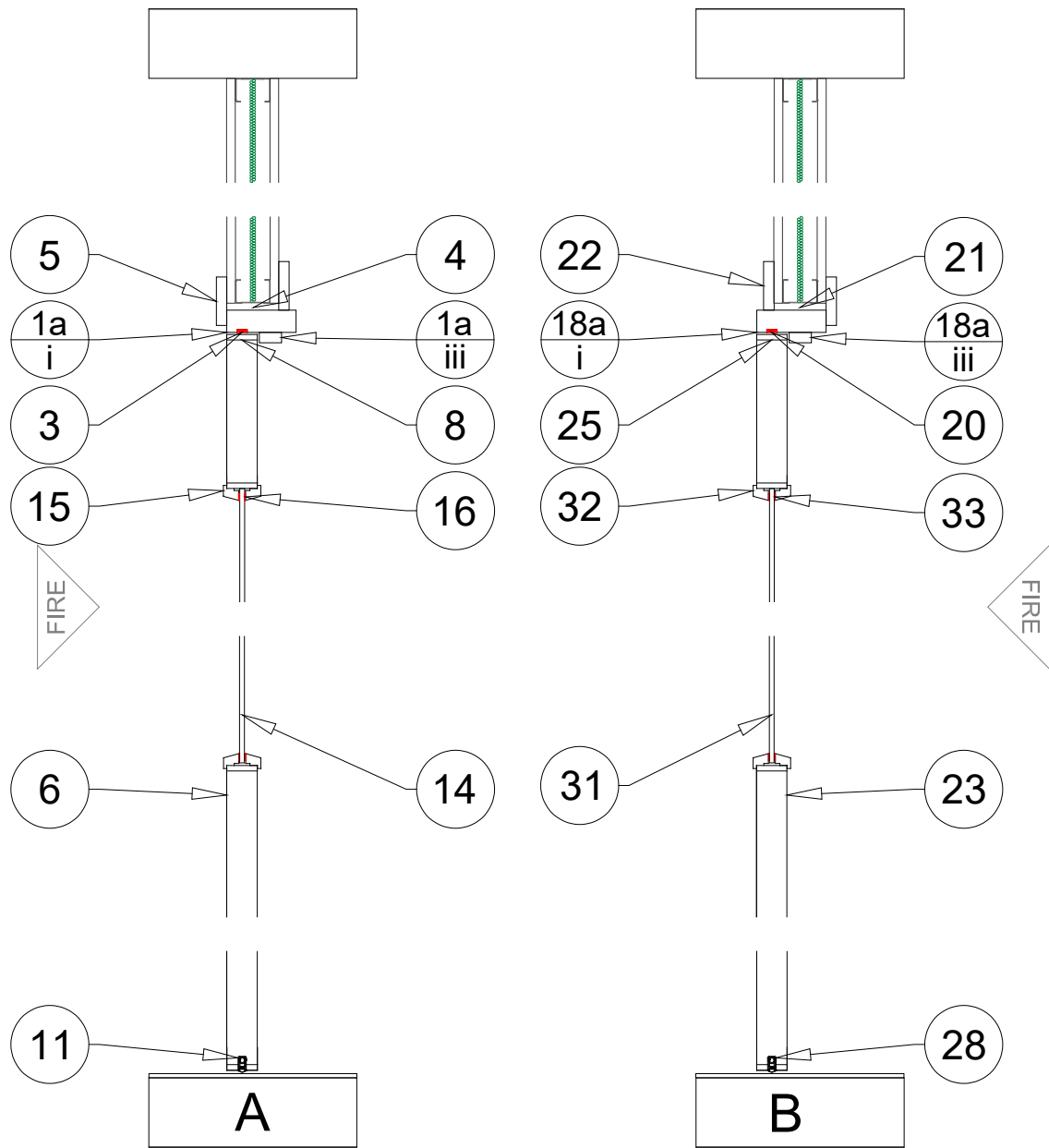


Figure 2 - Typical vertical section through the specimens

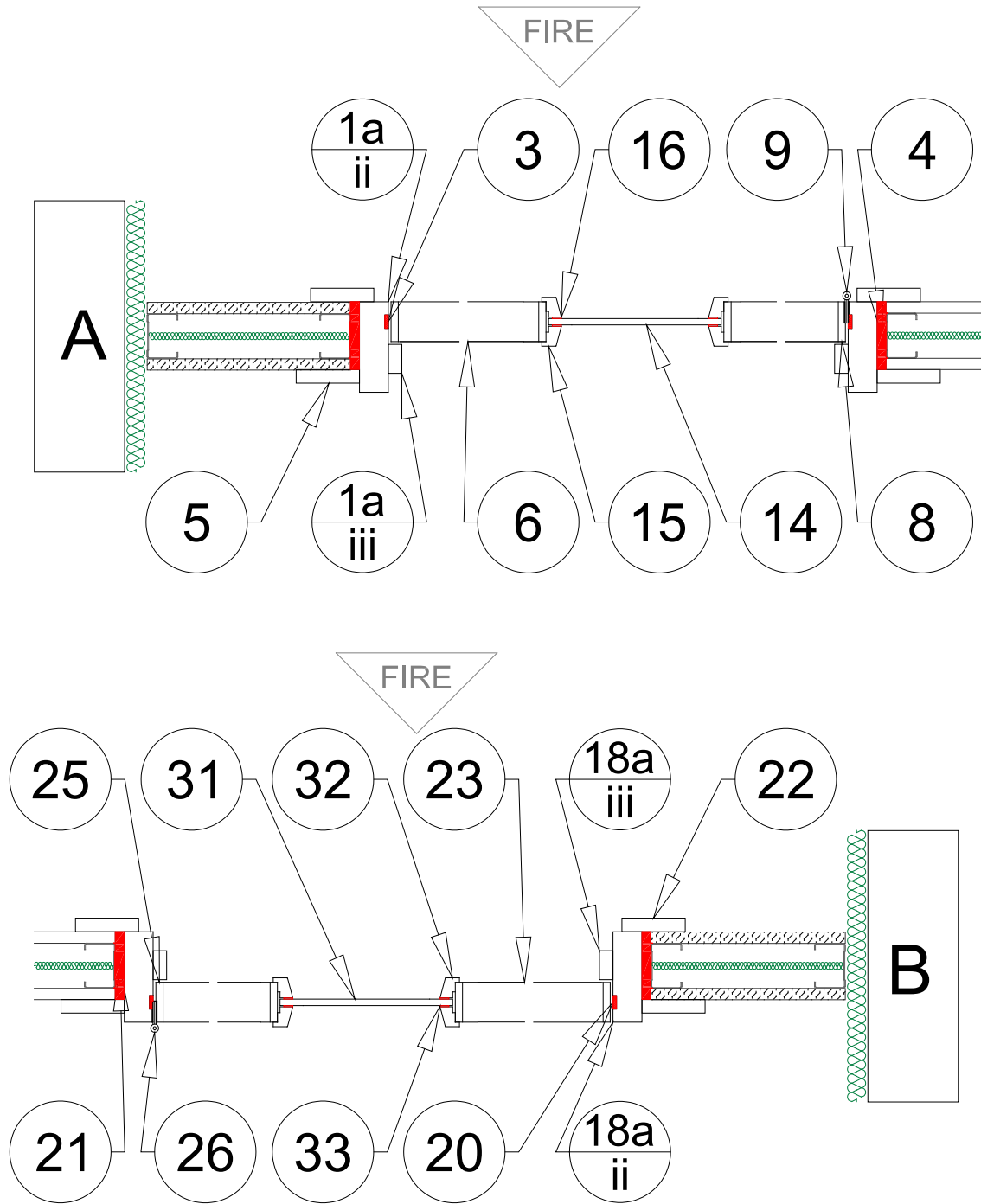


Figure 3 - Typical horizontal section through the specimens

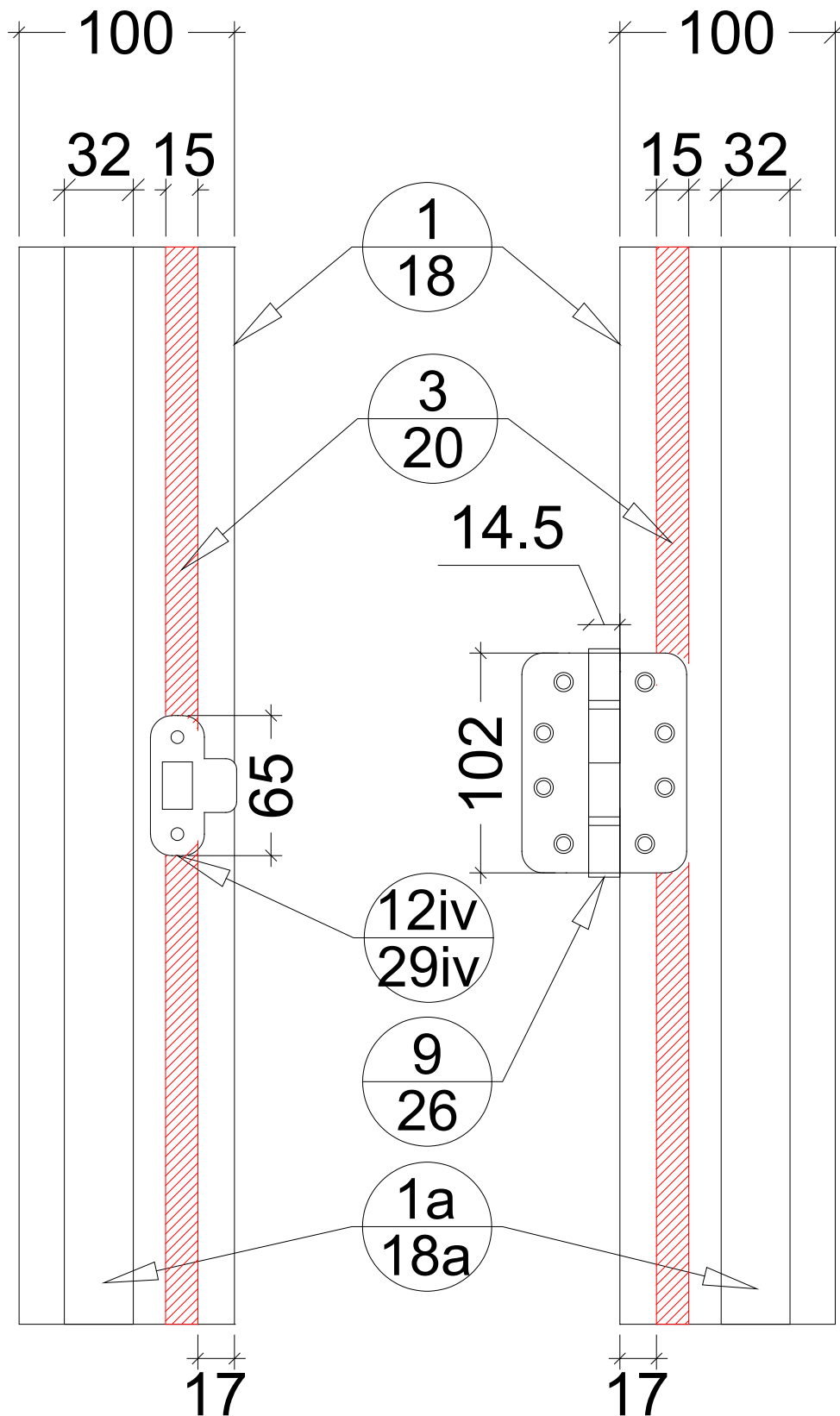


Figure 4 - Hardware intumescent interruptions

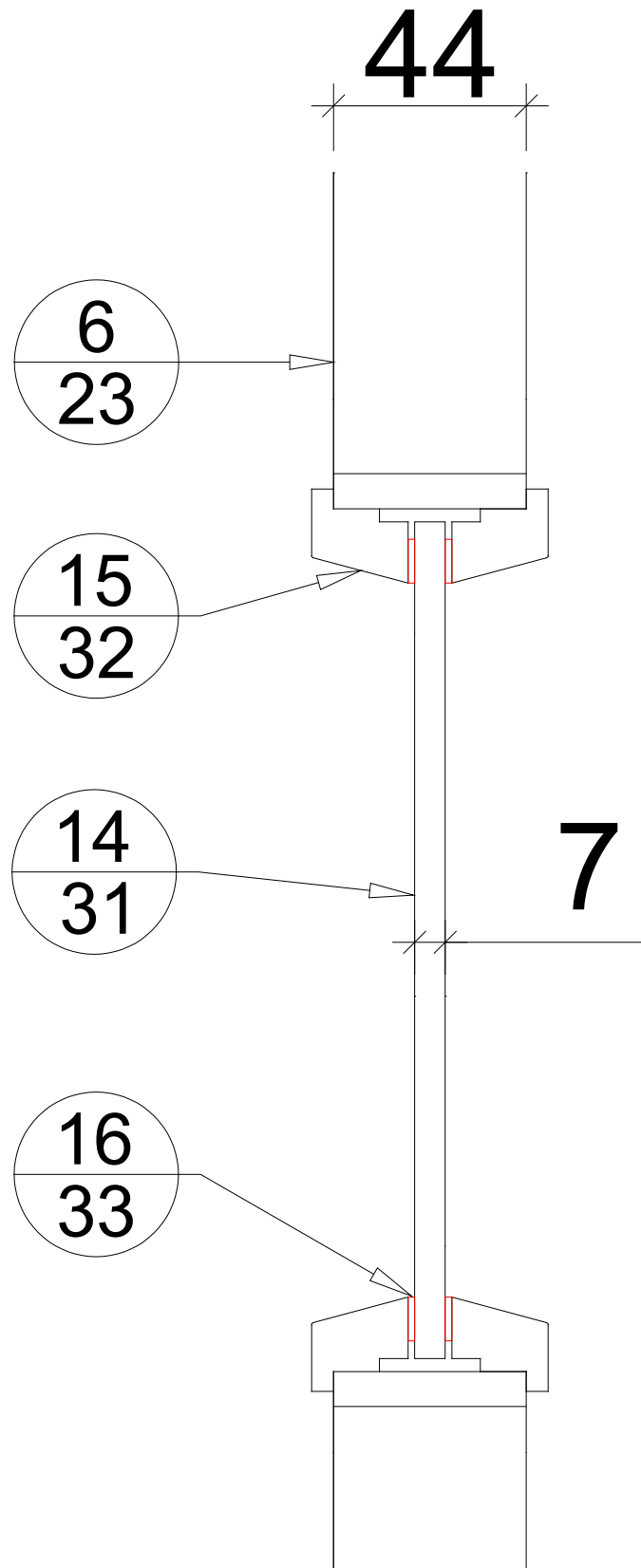


Figure 5 - Glazing detail

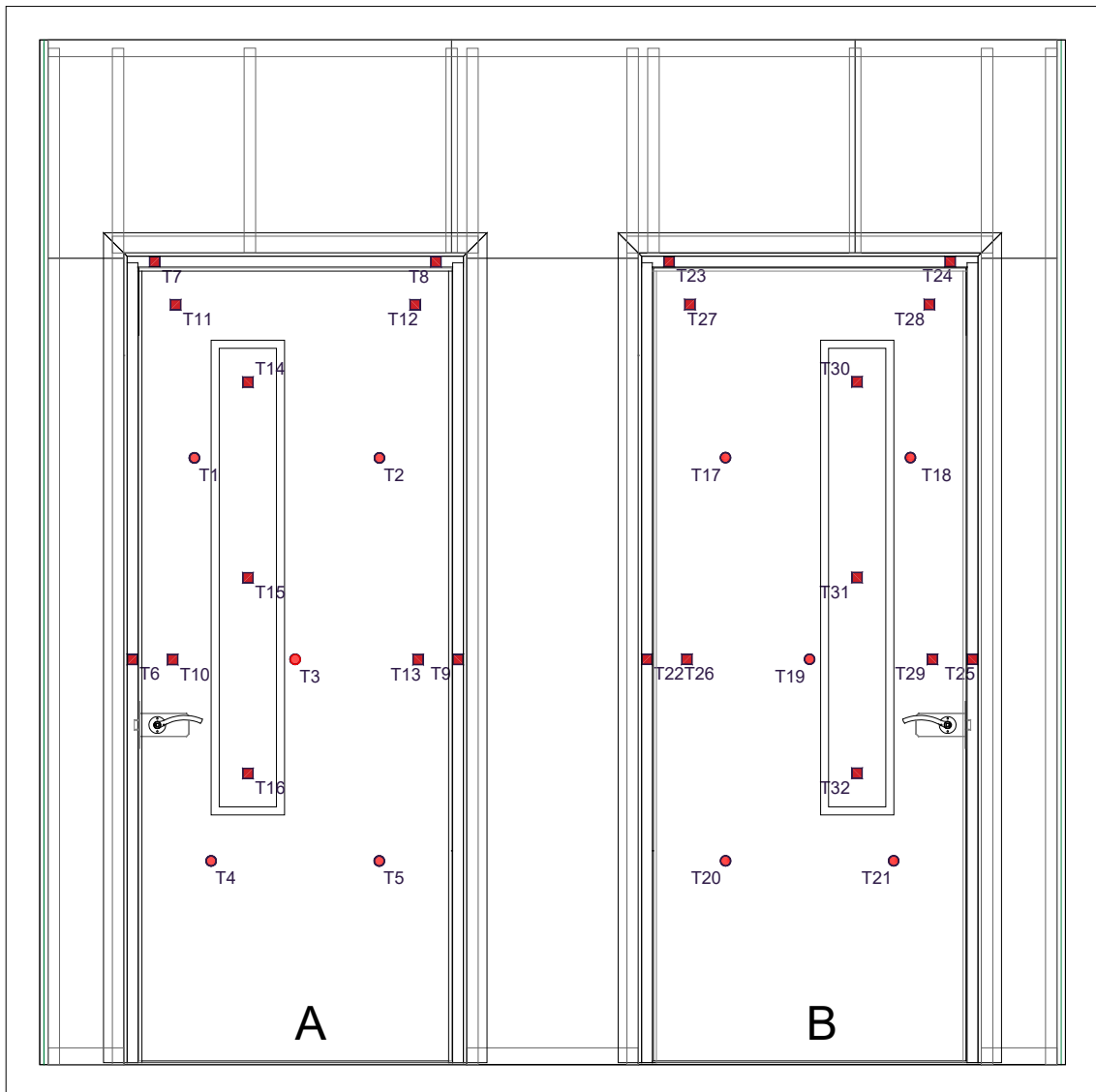


Figure 6 - Layout of instrumentation viewed from the unexposed surface of the test construction

4 Technical Schedule

4.1 Specimen A

1. Frame	
Manufacturer	DorSuite Ltd ¹
Reference	Sapele ¹
Material	Sapele Head and Sapele Jambs ¹
Density	600-640 kg/m ³ ¹
Moisture content	9.9 – 11.4 % (Lab Measurement)
Orientation to heating conditions	Opening towards
a. Overall size	1000 mm wide x 2400 mm high
i. Frame (Head)	100 mm wide x 32 mm thick
ii. Frame (Jambs)	100 mm wide x 32 mm thick
iii. Stop	32 mm wide x 12 mm deep
Jamb to Head jointing method, fixing detail and location	Housed butt joint with PVA & 2 No. Ø 0.5 mm x 60 mm long wood screws ¹
Stop to Frame jointing method, fixing detail and location	Pinned with 1.6 mm gauge x 50 mm long steel pins @ 300 mm centres
2. Frame Fixing Method to Supporting Construction	
Manufacturer	Timco
Reference	Solo Woodscrews
Type & material	Steel, zinc coated
Overall size	Ø 5 mm x 80 mm long
Location relative to frame reveal	35 mm in
Spacing	150 mm from top corner of jamb, 150 mm from bottom corner of jamb and at no more than 600 mm centres
Does the fixing penetrate intumescent seal within frame reveal	No
Packing Material	Blue 60 Timberex Wedge

Packing Material Dimension	2-15 mm taper x 15mm wide x 80mm long
3. Intumescent to frame reveal	
Quantity	1
Manufacturer	Exitex ¹
Reference	1.31.0330.2100.35
Material	Graphite ¹
Overall section size	15 mm wide x 4 mm thick
Application method	Adhesive strip to back
Location (relative to the opening face of the door leaf)	17 mm from opening face
4. Frame to supporting construction fire stopping detail	
Manufacturer	Blue 60
Reference	Fire Rated Frame Expanding Foam
Material	Expanding foam
Overall dimension	100 mm deep x 6 mm wide
Application method	Cartridge gunned
5. Architraves	
Supplier	DorSuite Ltd ¹
Reference	MDF Architraves ¹
Material	MDF ¹
Overall dimension	70 mm wide x 15 mm thick
Application method	Pinned 50 mm from corners and ends at no more than 200 mm centres with Ø 15 mm x 50 mm long steel pins
6. Door Leaf	
Supplier	DorSuite Ltd ¹
Reference	Strebord 54 ¹
Quantity of leaves on doorset	1

Glazing location relative to the head and closing edge	215 mm from the head and 215 mm from the closing edge
Overall leaf size supplied for testing	930 mm wide x 2360 mm high x 54 mm thick
Door Undercut (Top of cill / bottom of frame)	5 mm
7. Core element 1	
Supplier	Falcon Panel Products ¹
Supplier Ref	Strebord 54 ¹
Material	Particle Board ¹
Location	Core ¹
Density	520 – 630 kg/m ³ (Based on BMT/CAN/F14053 Revision A) ¹
Overall thickness and reduced thickness if door leaf incorporates fielded areas	N/A
8. Lippings / Edge banding	
Manufacturer	DorSuite Ltd ¹
Reference	LIP -0000 ¹
Material	Sapele ¹
Density	590-640 kg/m ³ ¹
Moisture content	9.3 – 9.6 % (Lab Measurement)
Overall size	8 mm deep x 54 mm wide
Fixing method	Adhered on ¹
Location	All edges of the door leaf
a. Adhesives	
i. Manufacturer	Henkel ¹
ii. Type	PUR ¹
iii. Reference	Technomelt PUR 270/7G ¹
iv. Curing method	Moisture Cured ¹
v. Application method	Roller applied ¹

9. Hinges	
Manufacturer	ZOO Hardware ¹
Reference	ZHSS243RS Class 13 ¹
Supplier	DorSuite Ltd ¹
Reference	(0023229) 102 x 76mm Grade 13 Radius Ball Bearing Butt Hinge – GE ¹
Quantity	4 per door
Primary material	Stainless Steel
Type	Grade 13 concealed hinges
a. Size	
i. Knuckle	Ø 14.5 mm x 106 mm high
ii. Blades	102 mm high x 31 mm wide x 3 mm thick
b. Fixings	
i. Type	Countersunk Screws
ii. Material	Stainless Steel
iii. Size	Ø 4.7 mm x 31 mm long
iv. Number off per blade	4no. 5 mm x 30 mm long
Position of each hinge relative to the head of the leaf	130 mm, 425 mm, 1110 mm, 2100 mm
Details of intumescent protection	2 mm Exitex Graphite Hinge Pads 1.31.0330.2100.35
Interruptions to Intumescent within the frame reveal	Fully interrupted
10. Door Closer	
Manufacturer	Rutland
Reference	TS9205
Supplier	DorSuite Ltd ¹
Supplier Reference	Size 2-5 Scissor Arm Door Closer, Semi Radius Cover c/2 Backcheck & Delayed Action – SNP (0029463) ¹
a. Material	

i. Body	Mild Steel
ii. Closer arm	Mild Steel
iii. Cover	Stainless Steel
Configuration	
b. Overall size	
i. Body	55 mm high x 235 mm wide x 38 mm deep
ii. Cover	70 mm high x 269 mm wide x 40mm deep
Fixing method	4 No 4.8 mm x 50 mm on body and 2 No 4.8 mm x 50 mm on bracket into frame
11. Drop Down Seal	
Manufacturer	Exitex Ltd ¹
Reference	Concealex A8100 Superior
a. Material	
i. Body	Aluminium
ii. Cover	Rubber
Overall size	20 mm high x 12 mm wide x 1.5 mm thick
Fixing method	2 No Ø 3 mm x 25 mm on cover, with Stainless Steel bracket
12. Lockset / Latch 1	
Manufacturer	ZOO Hardware ¹
Reference	PRTL76FD ¹
Supplier	DorSuite Ltd ¹
Supplier Reference	76mm Radius Forend Tubular Latch, 57mm Backset - SSS (0019094) ¹
a. Material	
i. Lockcase	Stainless Steel
ii. Forend plate	Stainless Steel
iii. Latch bolt	Stainless Steel

iv. keeper	Stainless Steel
b. Overall sizes	
i. Central Lockcase	21 mm high x 76 mm wide with 56 mm backset
ii. Forend plate	60 mm high x 25.2 mm wide
iii. Latch bolt	35 mm high x 9 mm wide x 20 mm single projection
c. Fixing method	
i. Forend plate	2 No. Ø 4 mm x 20 mm screws
ii. keeper	2 No. Ø 4 mm x 20 mm screws
Operation of lock bolt	Disengaged
Details of intumescent protection	EXI- Fire intumescent 2 mm Graphite
Interruptions to Intumescent within the frame reveal	Fully interrupts 1 intumescent, partially interrupts 1 intumescent
Location of centre of the spindle relative to the bottom of the leaf	Centre of the spindle measures 1000 mm from the bottom of the leaf
13. Lever handles	
Manufacturer	(Held in Commercial Confidence) ³
Reference	(Held in Commercial Confidence) ³
Supplier	DorSuite Ltd ¹
Supplier Reference	(0029349) 19 mm Dia Return to Door Lever on 8 mm Spring Rose – SSS ¹
Material	Stainless Steel
Overall size	130 mm length x 18.7 mm thick x 65 mm projection
Fixing method, fixing material, sizes, quantity and location	2 no. Ø 3.88 mm x 52.96 mm long bolt throughs (cut down from 60.02) and 4 no. Ø 3.69 mm x 19.69 mm long screws
14. Glazed unit / Glass	
Manufacturer / Supplier	Pyroguard UK Ltd ¹
Reference (Declaration of Performance)	Pyroguard 2-EW30/7-1 (Advance) ¹
Unit overall size	1400 mm high x 200 mm wide x 7 mm thick ¹

Aperture location relative to the head and closing edge of the leaf	200 mm from the head of the leaf and 200 mm from the closing edge of the leaf ¹
Aperture size (prior to any lining)	1404 mm high x 206 mm wide ¹
Sight size	1365 mm high x 170 mm wide
Expansion allowance	3 mm ¹
15. Beading	
Manufacturer	DorSuite Ltd ¹
Reference	Universal HTJ Bolection Bead ¹
Material	Sapele ¹
Density	6600-640 kg/m ³ ¹
Moisture content	8.8 – 8.9 % (Lab Measurement)
Overall size	1414 mm high x 216 mm wide
Cross Section Size	22 mm high x 22 mm wide
Fixing method, fixing material and sizes	16-gauge x 38 mm long pins
Fixing distances from corners, centres and angle relative to the face of the glass	50 mm from corners, 150 mm centres and at 15° to the face of the glass (Perpendicular to the bead)
16. Glazing Intumescent	
Manufacturer	Exitex Ltd ¹
Reference	EXI_GLAZE 30 ¹
Material	Closed cell foam tape ¹
Overall size	9 mm wide x 3 mm thick
Fixing method	Adhesive strip
17. Sealant applied to glass on the internal face of the leaf	
Manufacturer	Exitex Ltd ¹
Reference	Fire rated intumescent Acoustic acrylic sealant ¹
Material	Acrylic ¹
Overall size	Perimeter of glass x depth of expansion allowance
Fixing method	Cartridge gun

4.2 Specimen B

18. Frame	
Manufacturer	DorSuite Ltd ¹
Reference	Sapele ¹
Material	Sapele Head and Sapele Jambs ¹
Density	600-640 kg/m ³ ¹
Moisture content	9.9 – 11.4 % (Lab Measurement)
Orientation to heating conditions	Opening Away
a. Overall size	1000 mm wide x 2400 mm high
i. Frame (Head)	100 mm wide x 32 mm thick
ii. Frame (Jambs)	100 mm wide x 32 mm thick
iii. Stop	32 mm wide x 12 mm deep
Jamb to Head jointing method, fixing detail and location	Housed butt joint with PVA & 2 No. Ø 0.5 mm x 60 mm long wood screws ¹
Stop to Frame jointing method, fixing detail and location	Pinned with 1.6 mm gauge x 50 mm long steel pins @ 300 mm centres
19. Frame Fixing Method to Supporting Construction	
Manufacturer	Timco
Reference	Solo Woodscrews
Type & material	Steel, zinc coated
Overall size	Ø 5 mm x 80 mm long
Location relative to frame reveal	35 mm in
Spacing	150 mm from top corner of jamb, 150 mm from bottom corner of jamb and at no more than 600 mm centres
Does the fixing penetrate intumescent seal within frame reveal	No
Packing Material	Blue 60 Timberex Wedge
Packing Material Dimension	2-15 mm taper x 15 mm wide x 80 mm long

20. Intumescent to frame reveal (1)	
Quantity	1
Manufacturer	Exitex ¹
Reference	1.31.0330.2100.35 ¹
Material	Graphite ¹
Overall section size	15 mm wide x 4 mm thick
Application method	Adhesive strip to back
Location (relative to the opening face of the door leaf)	17 mm from opening face
21. Frame to supporting construction fire stopping detail	
Manufacturer	Blue 60
Reference	Fire Rated Frame Expanding Foam
Material	Expanding foam
Overall dimension	100 mm deep x 6 mm wide
Application method	Cartridge gunned
22. Architraves	
Supplier	DorSuite Ltd ¹
Reference	MDF Architraves ¹
Material	MDF ¹
Overall dimension	70 mm wide x 15 mm thick
Application method	Pinned 50 mm from corners and ends at no more than 200 mm centres with Ø 15 mm x 50 mm long steel pins
23. Door Leaf	
Supplier	DorSuite Ltd ¹
Reference	Strebord 54 ¹
Quantity of leaves on doorset	1
Glazing location relative to the head and closing edge	215 mm from the head and 215 mm from the closing edge

Overall leaf size supplied for testing	964 mm wide x 2260 mm high x 54 mm thick
Door Undercut (Top of cill / bottom of frame)	5 mm
24. Core element 1	
Supplier	Falcon Panel Products ¹
Supplier Ref	Strebord 54 ¹
Material	Particle Board ¹
Location	Core ¹
Density	520 – 630 kg/m ³ (Based on BMT/CAN/F14053 Revision A) ¹
Overall thickness and reduced thickness if door leaf incorporates fielded areas	N/A
25. Lippings / Edge banding	
Manufacturer	DorSuite Ltd ¹
Reference	LIP -0000 ¹
Material	Sapele ¹
Density	590-640 kg/m ³ ¹
Moisture content	9.3 – 9.6 % (Lab Measurement)
Overall size	7 mm deep x 54 mm wide
Fixing method	Adhered on ¹
Location	All edges of the door leaf
a. Adhesives	
i. Manufacturer	Henkel ¹
ii. Type	PUR ¹
iii. Reference	Technomelt PUR 270/7G ¹
iv. Curing method	Moisture Cured ¹
v. Application method	Roller applied ¹
26. Hinges	

Manufacturer	ZOO Hardware ¹
Reference	ZHSS243RS Class 13 ¹
Supplier	DorSuite Ltd ¹
Reference	(0023229) 102 x 76mm Grade 13 Radius Ball Bearing Butt Hinge – GE ¹
Quantity	4 per door
Primary material	Stainless Steel
Type	Grade 13 concealed hinges
a. Size	
i. Knuckle	Ø 14.5 mm x 106 mm high
ii. Blades	102 mm high x 31 mm wide x 3 mm thick
b. Fixings	
i. Type	Countersunk Screws
ii. Material	Stainless Steel
iii. Size	Ø 4.7 mm x 31 mm long
iv. Number off per blade	4no. 5 mm x 30 mm long
Position of each hinge relative to the head of the leaf	130 mm, 425 mm, 1110 mm, 2100 mm
Details of intumescent protection	2 mm Exitex Graphite Hinge Pads 1.31.0826.0031.00
Interruptions to Intumescent within the frame reveal	Fully interrupted
27. Door Closer	
Manufacturer	Rutland
Reference	TS9205
Supplier	DorSuite Ltd ¹
Supplier Reference	Size 2-5 Scissor Arm Door Closer, Semi Radius Cover c/2 Backcheck & Delayed Action – SNP (0029463) ¹
a. Material	
i. Body	Mild Steel

ii. Closer arm	Mild Steel
iii. Cover	Stainless Steel
Configuration	
b. Overall size	
i. Body	55 mm high x 235 mm wide x 38 mm deep
ii. Cover	70 mm high x 269 mm wide x 40mm deep
Fixing method	4 No 4.8 mm x 50 mm on body and 2 No 4.8 mm x 50 mm on bracket into frame
28. Drop Down Seal	
Manufacturer	Exitex Ltd ¹
Reference	Concealex A8100 Superior
a. Material	
i. Body	Aluminium
ii. Cover	Rubber
Overall size	20 mm high x 12 mm wide x 1.5 mm thick
Fixing method	2 No Ø 3 mm x 25 mm on cover, with Stainless Steel bracket
29. Lockset / Latch 1	
Manufacturer	ZOO Hardware ¹
Reference	PRTL76FD ¹
Supplier	DorSuite Ltd ¹
Supplier Reference	76mm Radius Forend Tubular Latch, 57mm Backset - SSS (0019094) ¹
a. Material	
i. Lockcase	Stainless Steel
ii. Forend plate	Stainless Steel
iii. Latch bolt	Stainless Steel
iv. keeper	Stainless Steel

b. Overall sizes	
i. Central Lockcase	21 mm high x 76 mm wide with 56 mm backset
ii. Forend plate	60 mm high x 25.2 mm wide
iii. Latch bolt	35 mm high x 9 mm wide x 20 mm single projection
c. Fixing method	
i. Forend plate	2 No. Ø 4 mm x 20 mm screws
ii. keeper	2 No. Ø 4 mm x 20 mm screws
Operation of lock bolt	Disengaged
Details of intumescent protection	EXI- Fire intumescent 2 mm Graphite
Interruptions to Intumescent within the frame reveal	Fully interrupts 1 intumescent, partially interrupts 1 intumescent
Location of centre of the spindle relative to the bottom of the leaf	Centre of the spindle measures 1000 mm from the bottom of the leaf
30. Lever handles	
Manufacturer	(Held in Commercial Confidence) ³
Reference	(Held in Commercial Confidence) ³
Supplier	DorSuite Ltd ¹
Supplier Reference	(0029349) 19 mm Dia Return to Door Lever on 8 mm Spring Rose – SSS ¹
Material	Stainless Steel
Overall size	130 mm length x 18.7 mm thick x 65 mm projection
Fixing method, fixing material, sizes, quantity and location	2 no. Ø 3.88 mm x 52.96 mm long bolt throughs (cut down from 60.02) and 4 no. Ø 3.69 mm x 19.69 mm long screws
31. Glazed unit / Glass	
Manufacturer / Supplier	Pyroguard UK Ltd ¹
Reference (Declaration of Performance)	Pyroguard 2-EW30/7-1 (Advance) ¹
Unit overall size	1400 mm high x 200 mm wide x 7 mm thick ¹
Aperture location relative to the head and closing edge of the leaf	200 mm from the head of the leaf and 200 mm from the closing edge of the leaf ¹
Aperture size (prior to any lining)	1404 mm high x 206 mm wide ¹

Sight size	1365 mm high x 170 mm wide
Expansion allowance	3 mm ¹
32. Beading	
Manufacturer	DorSuite Ltd ¹
Reference	Universal HTJ Bolection Bead ¹
Material	Sapele ¹
Density	6600-640 kg/m ³¹
Moisture content	8.8 – 8.9 % (Lab Measurement)
Overall size	1414 mm high x 216 mm wide
Cross Section Size	22 mm high x 22 mm wide
Fixing method, fixing material and sizes	16-gauge x 38 mm long pins
Fixing distances from corners, centres and angle relative to the face of the glass	50 mm from corners, 150 mm centres and at 15° to the face of the glass (Perpendicular to the bead)
33. Glazing Intumescent	
Manufacturer	Exitex Ltd ¹
Reference	EXI_GLAZE 30 ¹
Material	Closed cell foam tape ¹
Overall size	9 mm wide x 3 mm thick
Fixing method	Adhesive strip
34. Sealant applied to glass on the internal face of the leaf	
Exitex Ltd ¹	Exitex Ltd ¹
Fire rated intumescent Acoustic acrylic sealant ¹	Fire rated intumescent Acoustic acrylic sealant ¹
Acrylic ¹	Acrylic ¹
Perimeter of glass x depth of expansion allowance	Perimeter of glass x depth of expansion allowance
Cartridge gun	Cartridge gun
Exitex Ltd ¹	Exitex Ltd ¹

--	--

4.3 Supporting Construction

35. Construction As Per BS EN 1363-1:2020 § 7.2.2.4	
Intended Resistance	EI60
Group	A
Timber Inserts to Studs	Head and Jambs
36. Head/ Floor Track	
Supplier/ Manufacturer	Knauf UK
Reference	Knauf U-Channel
Type & Material	Steel U-Channel
Dimensions	52 mm deep x 25 mm wide x 3000 mm long x 0.55 mm thick
Fixing Method	Screw fixed to head and base of the restraint frame
a. Fixing	
i. Supplier	United Kingdom Testing and Certification
ii. Reference	TX Countersunk concrete screw
iii. Material	Steel
iv. Dimension	Ø 7.5 mm x 100 mm at the head Ø 7.5 mm x 60 mm at base long self-tapping screws staggered at max 600 mm centres
37. Studs	
Manufacturer	Knauf UK
Reference	Knauf C stud
Type & Material	Steel C-Stud
Dimensions	52 mm deep x 25 mm wide x 3000 mm long x 0.55 mm thick
Fixing Method	Friction fitted to the head/ floor track, with the fixed edge stud at 600 mm centres
a. Fixing	

i. Supplier	United Kingdom Testing and Certification
ii. Reference	TX Countersunk concrete screw
iii. Material	Steel
iv. Dimension	Ø 7.5 mm x 50 mm long self-tapping screws staggered at max 600 mm centres
v. Location	Fixed edge stud only
38. Lining(s)	
Manufacturer	Knauf UK
Reference	Knauf Firepanel
Type & Material	Paper faced, gypsum plasterboard type F
Density	10 kg/m ²
Layer Quantity	2
Dimensions	12.5 mm thick x 1200 mm wide x 2400 mm high
Fixing method	Fixed on the face of the boards into C-studs at 300 C/C
a. Fixings	
i. Supplier	United Kingdom Testing and Certification
ii. Reference	Gyproc Jackpoint Screws
iii. Material	Steel
iv. Dimension	Ø 3.8 mm x 25/32/42 mm
v. Location	Fixed edge stud only
Joints Filled & Taped With	Knauf Fill & Finish Light Plasterboard Joint Filler Ready Mixed and Knauf Tape.
Fixing Plate	2400 mm long x 70 mm high x 0.7 mm thick Knauf fixing plate fixed behind plasterboard joint and between layers of board.
39. Wall Insulation	
Manufacturer	Knauf Insulation Ltd.
Reference	Knauf Insulation Rocksilks® RS45 Building Slab
Type & Material	Rock mineral wool slab

Dimensions	1200 mm high x 600 mm wide x 50 mm thick slab sections
Density	45 kg/m ³ (± 10 kg/m ³) ²
Fixing Method	Compression Fitted
Locations	Centrally Located in the wall
40. Board for Simulated Floor Level	
Manufacturer	British Gypsum
Reference	Glasroc F MultiBoard 6mm
Density	833 kg/m ³ ²
Dimensions	6 mm thick x Opening width + 400 mm long x wall depth + 500 mm wide
Fixing(s)	Compression fitted between restraint frame and specimen.
41. Free Edge Gasket	
Manufacturer	Knauf Insulation Ltd.
Reference	Knauf Insulation Rocksilik® RS60 Building Slab
Type & Material	Rock mineral wool slab
Dimensions	1200 mm high x 600 mm wide x 50 mm thick slab sections
Density	45 kg/m ³ (± 10 kg/m ³) ²
Location	At the free edge of the supporting construction

All dimensions are in millimetres (mm) unless otherwise stated.

1. Information provided by the Test Sponsor. Not verified by United Kingdom Testing and Certification.

2. Nominal value.

3. Information is commercial in confidence. Full details are retained on file by United Kingdom Testing and Certification.

5 Specimen Photographs



Figure 7 - Item 1a ii

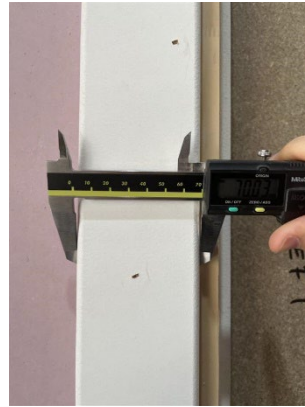


Figure 8 - Item 5



Figure 9 - Item 15



Figure 10 - Item 8



Figure 11 - Item 1a iii

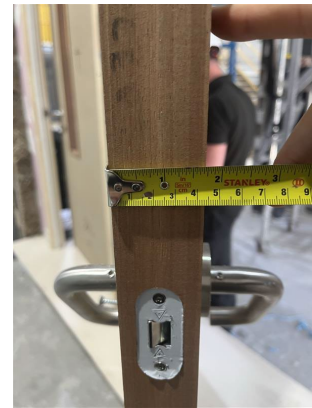


Figure 12 - Item 6



Figure 13- Item 13

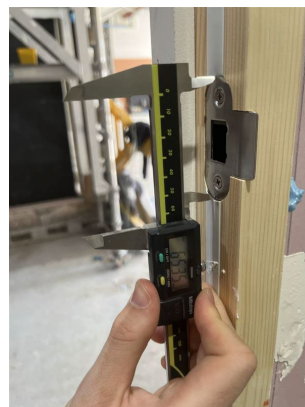


Figure 14 - Item 12a iv



Figure 15 - Item 9

6 Test Procedure

6.1 Ambient Temperature

The ambient air temperature in the vicinity of the test construction was 17.3 °C at the start of the test with a maximum variation of ± 3.2 °C during the test.

6.2 Heating Conditions

The specimens were subject to heating conditions in accordance with BS EN 1363-1:2020 § 5.1. This was monitored and controlled for the duration of the test using type K thermocouples which were distributed across a vertical plane 100 ± 50 mm from the exposed surface of the test construction. The resulting Time-Temperature distribution is presented in Figure 23.

6.3 Pressure Conditions

The specimens were subject to a pressure regime in accordance with BS EN 1363-1:2020 § 5.2. The calculated pressure differential relative to the laboratory atmospheric pressure at a height of 365, 1612 and 2850 mm from the furnace floor level was -1.1, 9.4 and 20.0 Pa respectively which equates to 0 Pa at a height of 500 mm from the furnace floor level. The furnace was maintained at these pressures within ± 5 Pa five minutes after the commencement of the test and ± 3 Pa ten minutes after the commencement of the test and for the remainder of the test duration. The pressure deviated from the specified conditions on no instances throughout the duration of the test. The Time-Pressure distribution is presented in Figure 24.

6.4 Unexposed Surface Temperature

A roving thermocouple was available for the evaluation of the maximum temperature rise of the unexposed surface of the specimens for the duration of the test. Any measurements using the roving thermocouple are presented on page 41.

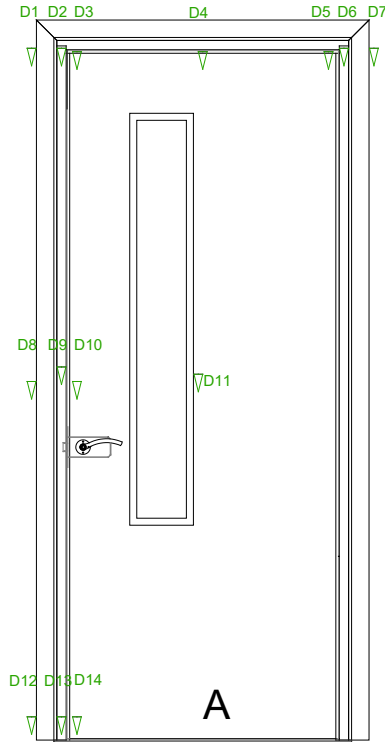
Disc thermocouples were affixed to the unexposed surface of the specimens in accordance with BS EN 1634-1:2014+A1:2018 § 9.1.2 to measure and monitor the maximum and the mean temperature rise of the unexposed surface of the specimens for the duration of the test. A summary of the measurements is presented in Figure 25 and Figure 26 and the locations of these thermocouples is illustrated in Figure 6.

6.5 Radiation

The Radiant Heat of the specimens was measured using 180° field of view, water cooled heat flux meters that were positioned at the geometric center of each specimen at a distance of 1000 mm from the unexposed surface. Measurements were recorded for the duration of the test and a summary of the recorded measurements is presented in Figure 27.

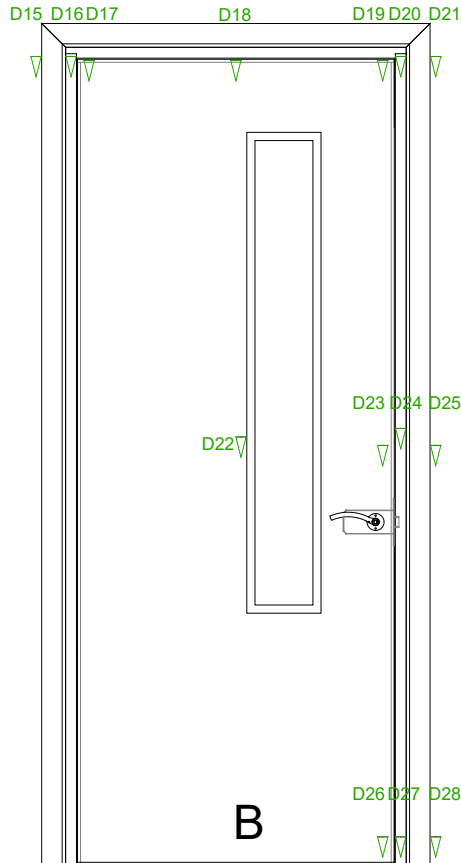
6.6 Deflection

All measurements are in millimeters (mm) unless stated otherwise. Positive values indicate movement towards the heating conditions.



Time (mins)	D1	D2	D3	D4	D5	D6	D7	D8	D9	D10	D11	D12	D13	D14
0	0	0	0	0	0	0	0	0	0	0	0	0	0	0
10	1	1	0	-3	5	2	5	1	1	-7	-4	-2	3	2
20	11	13	13	7	11	9	10	9	9	2	-4	0	1	9
25	15	22	20	12	14	20	16	11	11	8	-1	1	2	6
30	24	24	20	15	*	22	23	7	7	13	1	2	5	8

* Unable to read due to smoke



Time (mins)	D15	D16	D17	D18	D19	D20	D21	D22	D23	D24	D25	D26	D27	D28
0	0	0	0	0	0	0	0	0	0	0	0	0	0	0
10	3	*	*	-1	-2	-2	-2	-1	-3	1	*	-1	-2	-1
20	1	5	7	-1	12	6	3	-14	-4	4	0	0	0	-1
25	1	6	9	3	16	9	5	-13	-1	9	3	4	2	-2
30	0	5	13	7	16	10	7	-14	-2	10	2	4	1	-3

* Unable to read due to smoke

6.7 Observations

Specimen	HH	MM	SS	E ¹	U ²	Observation
	00	00	00			The test commences.
A+B	00	00	32		X	Smoke/steam release from the leading edge and hanging edge at several points.
A+B	00	00	47		X	Both vision panels have cracked and turned opaque.
A+B	00	02	50		X	Continuous smoke/steam release at the head, hanging edge and leading edge of both doorsets.
A+B	00	05	20		X	Both vision panels are discoloured.
A+B	00	06	59		X	Moisture release at the leading edge.
B	00	09	03		X	Latch area has deflected outwards from the frame, continuous smoke/steam release all around from previous locations,
A	00	09	37		X	Continuous smoke/steam release at the latch area and head hanging edge.
A+B	00	12	00	X		Closer and hardware is still intact. All visible timber aspects are charring.
B	00	15	01		X	Intermittent flaming from the bottom of the leading edge.
B	00	20	04		X	Intermittent flaming from the latch, area continues to move outwards.
A+B	00	23	06		X	Discolouration across head and leading edge.
A+B	00	25	00	X		Architraves and beading coming away and both closers are gone.
A	00	29	24		X	Glowing visible at the head leading edge.

¹ Viewed from exposed surface of the test construction.

² Viewed from unexposed surface of the test construction.

Specimen	HH	MM	SS	E ³	U ⁴	Observation
B	00	29	56		X	Intermittent flaming at the leading edge at the latch.
B	00	31	27		X	A sustained flame greater than 10 seconds is observed at the leading edge, sustained flame integrity failure has occurred and by virtue insulation failure has occurred.
B	00	31	30		X	Cotton pad test performed at the leading edge at mid-point and ignited, cotton pad integrity failure has occurred
	00	32	09			The test is discontinued at the request of the Test Sponsor.

³ Viewed from exposed surface of the test construction.

⁴ Viewed from unexposed surface of the test construction.

6.8 Test Images



Figure 16 – The exposed surface of the test construction prior to commencement of the test



Figure 17 – The unexposed surface of the test construction prior to the commencement of the test



Figure 18 - The unexposed surface of the test construction after a test duration of 10 minutes



Figure 19 - The unexposed surface of the test construction after a test duration of 20 minutes

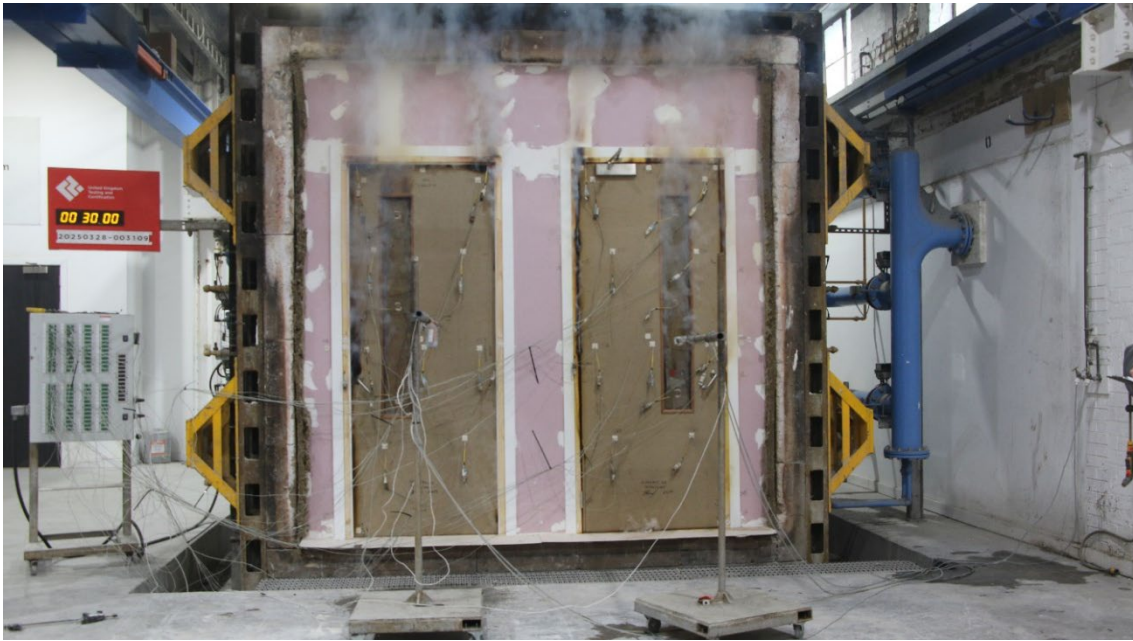


Figure 20 - The unexposed surface of the test construction after a test duration of 30 minutes



Figure 21 - The unexposed surface of the test construction after a test duration of 32 minutes



Figure 22 - The exposed surface of the test construction after the test was discontinued

7 On-going Implications

7.1 Limitations

This report details the method of construction, the test conditions and the results obtained when the specific element of construction described herein was tested following the procedure outlined in BS EN 1363-1, and where appropriate BS EN 1363-2. Any significant deviation with respect to size, constructional details, loads, stresses, edge or end conditions other than those allowed under the field of direct application in the relevant test method is not covered by this report and should be the subject to design appraisal by a competent individual.

Guidance on the field of direct application can be found in BS EN 1634-1:2014+A1:2018 § 13 and can be applied following the identification of classification(s).

7.2 Accuracy of Results

Due to the nature of fire resistance testing and the consequent difficulty in quantifying the uncertainty of measurement of fire resistance, it is not possible to provide a stated degree of accuracy of the result.

No statement of conformity with the testing specifications is made or implied in this report. However, measurement results are reviewed, where applicable, to establish where measurement results exceed the control parameters established in the relevant resistance to fire test standard.

7.3 European Group of Organisations for Fire Testing (EGOLF)

Certain aspects of some fire test specifications are open to different interpretations. EGOLF have identified several such areas and have agreed resolutions which define common agreement of interpretations between fire test laboratories which are members of the Group. The following resolutions have been followed when conducting this test:

1. EGOLF AGREEMENT 034-2018 – Use of cotton pad in fire resistance tests.
2. EGOLF AGREEMENT 036-2018 – Discontinuity-different interpretations.
3. EGOLF Recommendation 013-2017 – Content of statements of 'Field of direct application' in test reports.

8 Detailed Expression of Results

8.1 Specimen A

Specimen A satisfied the performance criterion specified in BS EN 1634-1:2014+A1:2018 § 11 for the following intervals:

Performances		Criteria	Time (completed minute)	Failure Criteria Exceeded
Integrity		Ignition of a cotton pad	32 minutes	No failure*
		Sustained flaming	32 minutes	No failure*
		Cracks or openings in excess of given dimensions	32 minutes	No failure*
Insulation – Specimen	Normal procedure:	Average temperature, increase of $\Delta 140^{\circ}\text{C}$	32 minutes	No failure*
		Maximum temperature on leaf/leaves, increase of $\Delta 180^{\circ}\text{C}$	32 minutes	No failure*
		Maximum temperature on the frame adjacent to leaf/leaves, increase of $\Delta 360^{\circ}\text{C}$	32 minutes	No failure*
Insulation – Discrete Area		Average temperature for this discrete area, increase of $\Delta 140^{\circ}\text{C}$	10 minutes on average mean	
		Maximum temperature for this discrete area, increase of $\Delta 180^{\circ}\text{C}$	11 minutes @ TC14	
Radiation	Specimen	Maximum or average radiation value > 5 kw/m^2	32 minutes	No failure*
		Maximum or average radiation value > 10 kw/m^2	32 minutes	No failure*
		Maximum or average radiation value > 15 kw/m^2	32 minutes	No failure*
		Maximum or average radiation value > 20 kw/m^2	32 minutes	No failure*

		Maximum or average radiation value > 25 kw/m ²	32 minutes	No failure*
--	--	--	------------	-------------

*The test was discontinued after a period of 32 minutes.

8.2 Specimen B

Specimen B satisfied the performance criterion specified in BS EN 1634-1:2014+A1:2018 § 11 for the following intervals:

Performances		Criteria	Time (completed minute)	Failure Criteria Exceeded
Integrity		Ignition of a cotton pad	31 minutes	
		Sustained flaming	31 minutes	
		Cracks or openings in excess of given dimensions	32 minutes	No failure*
Insulation – Specimen	Normal procedure:	Average temperature, increase of $\Delta 140^{\circ}\text{C}$	31 minutes	Due to integrity failure
		Maximum temperature on leaf/leaves, increase of $\Delta 180^{\circ}\text{C}$	31 minutes	Due to integrity failure
		Maximum temperature on the frame adjacent to leaf/leaves, increase of $\Delta 360^{\circ}\text{C}$	31 minutes	Due to integrity failure
Insulation – Discrete Area		Average temperature for this discrete area, increase of $\Delta 140^{\circ}\text{C}$	7 minute @ average mean	
		Maximum temperature for this discrete area, increase of $\Delta 180^{\circ}\text{C}$	8 minutes at TC32	
Radiation	Specimen	Maximum or average radiation value $> 5 \text{ kw/m}^2$	32 minutes	No failure*
		Maximum or average radiation value $> 10 \text{ kw/m}^2$	32 minutes	No failure*
		Maximum or average radiation value $> 15 \text{ kw/m}^2$	32 minutes	No failure*
		Maximum or average radiation value $> 20 \text{ kw/m}^2$	32 minutes	No failure*

		Maximum or average radiation value > 25 kw/m ²	32 minutes	No failure*
--	--	---	------------	-------------

*The test was discontinued after a period of 32 minutes.

9 Figures

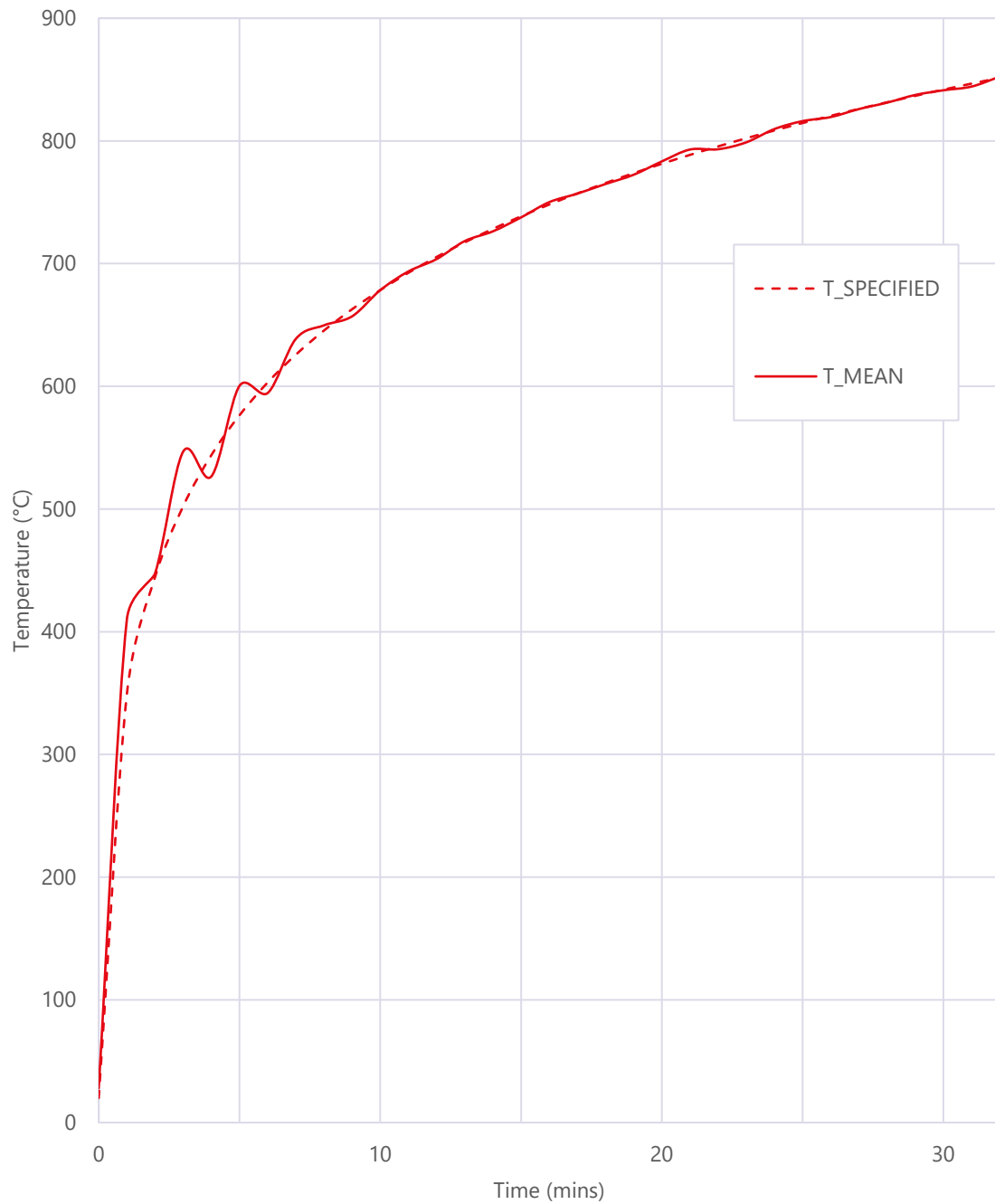


Figure 23 – Graph presenting the Time-Temperature distribution of the furnace

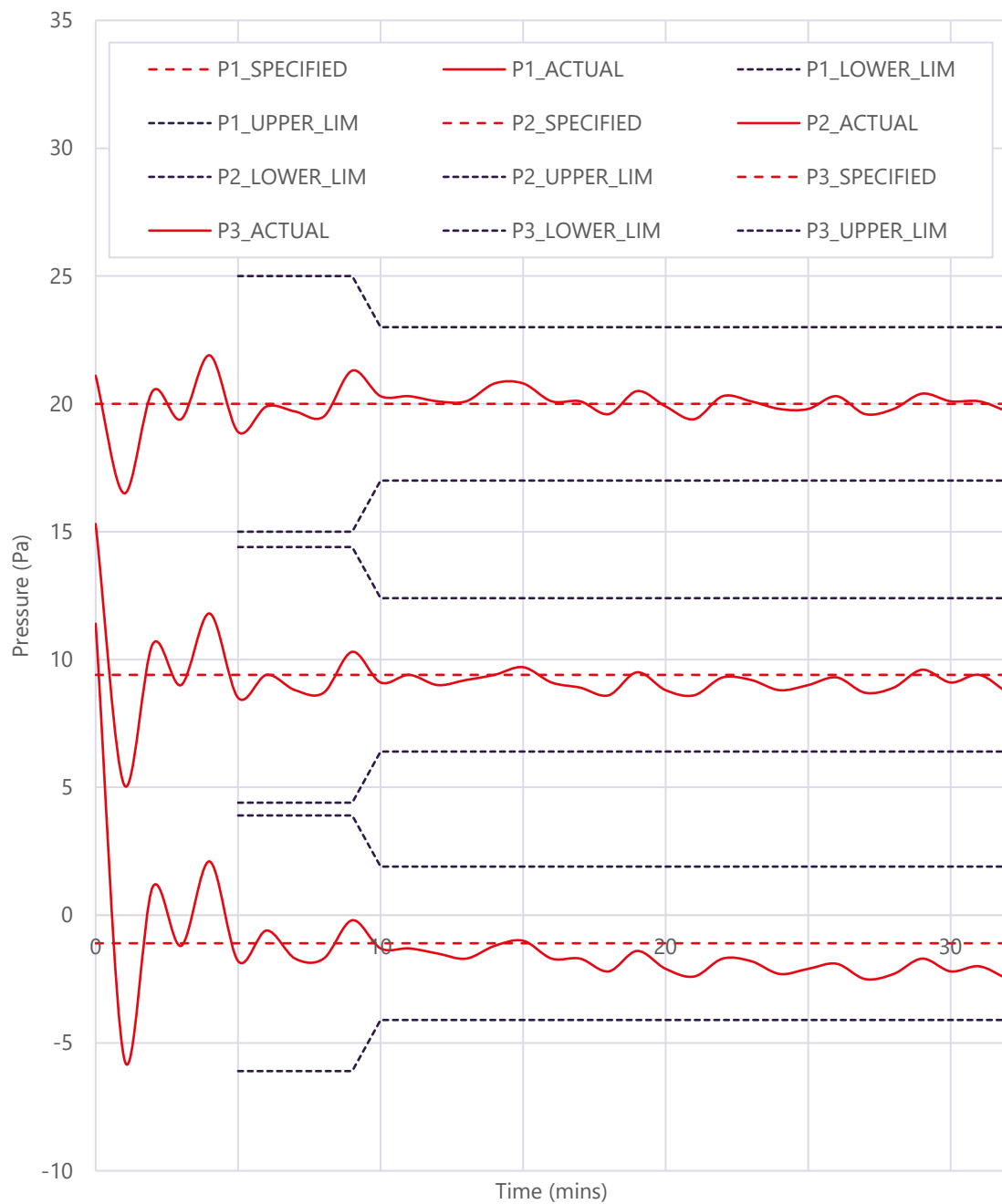


Figure 24 – Graph presenting the Time-Pressure distribution of the furnace

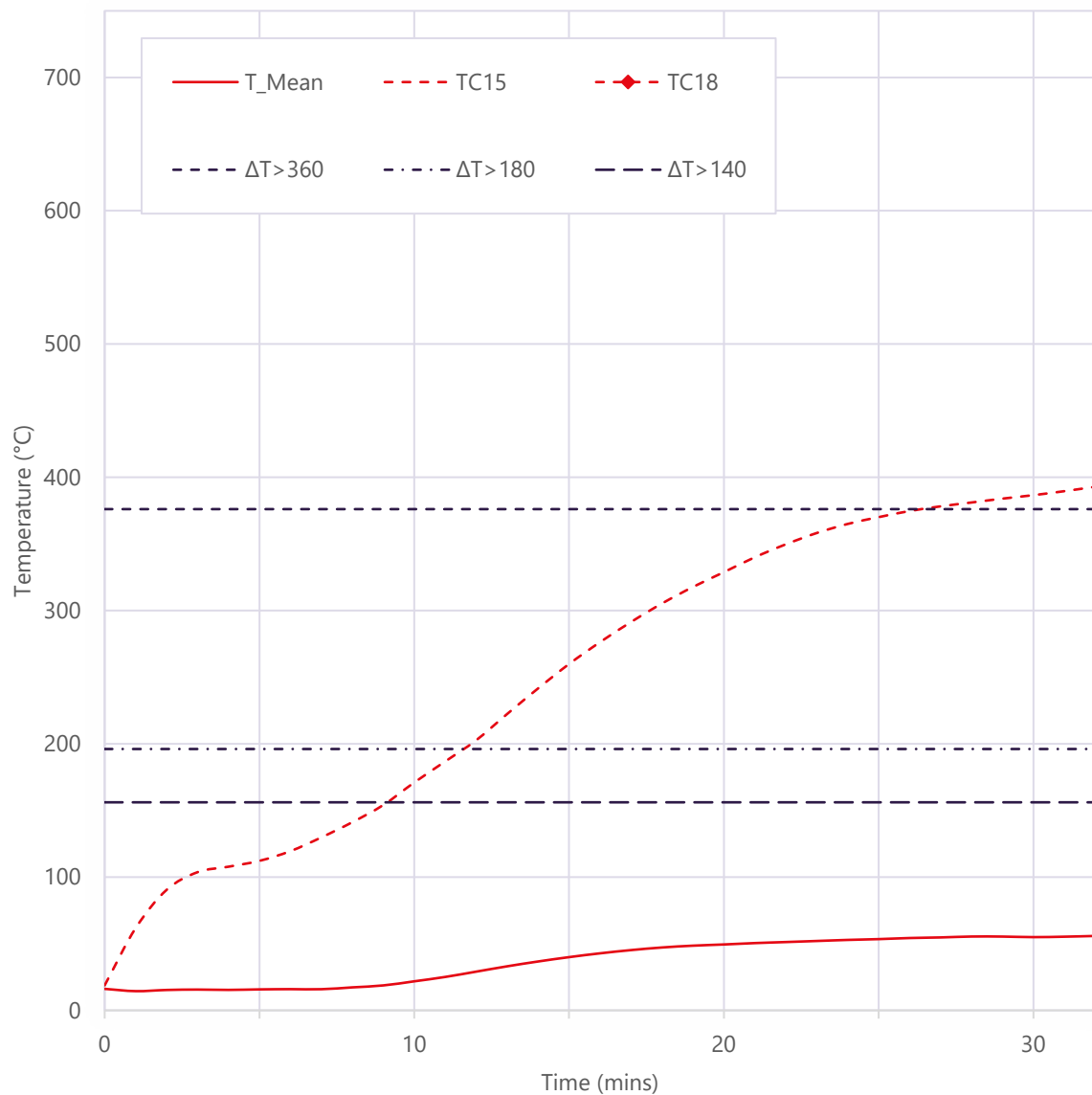


Figure 25 - Graph presenting the Time-Temperature distribution of the unexposed surface of Specimen A

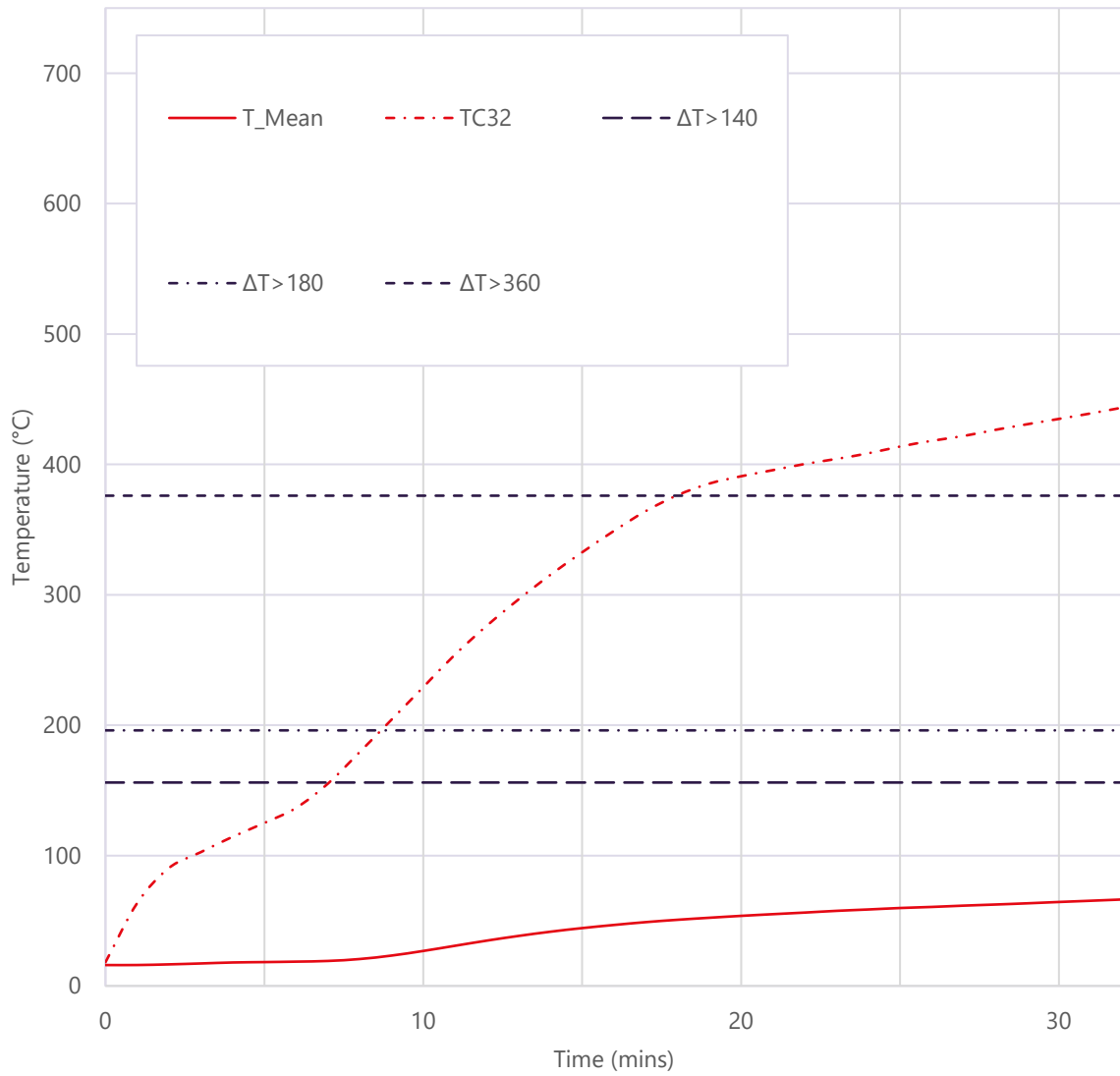


Figure 26 - Graph presenting the Time-Temperature distribution of the unexposed surface of Specimen B

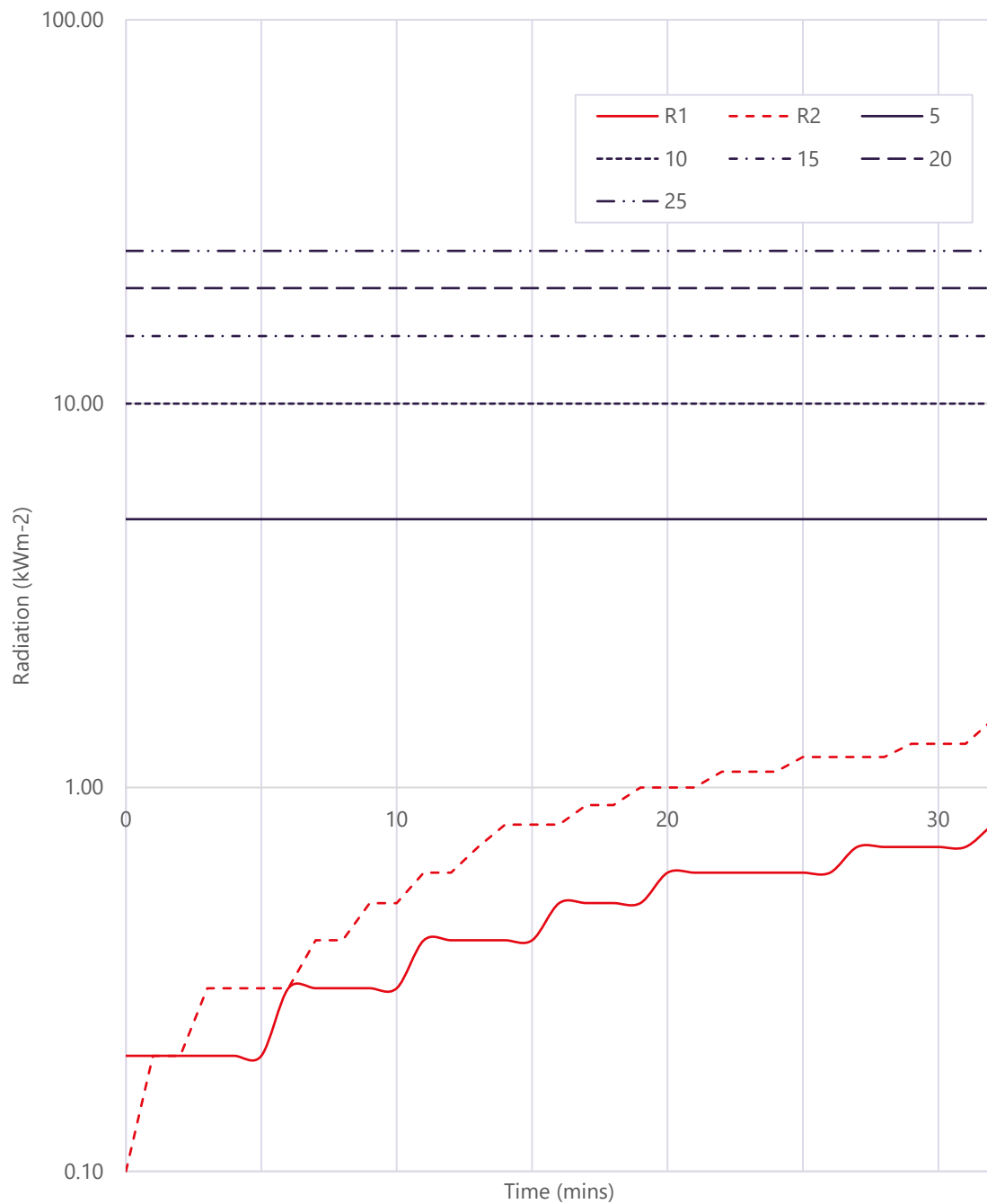


Figure 27 - Graph presenting Time-Radiation distribution of the unexposed surface of the specimens

10 Tables

Table 1 – The temperatures recorded by the disc thermocouples used evaluate the mean and maximum temperature rise of the unexposed surface of Specimen A under the normal procedure. Values are in Degrees Celsius (°C) unless otherwise stated.

Time (mins)	TC1	TC2	TC3	TC4	TC5
0	15.8	16.5	16.0	16.2	16.1
2	11.7	16.5	16.0	16.3	16.0
4	11.0	16.8	16.3	16.5	16.2
6	13.3	17.0	16.4	16.6	16.3
8	*	17.9	17.4	16.9	16.8
10	23.7	22.9	22.9	19.1	20.4
12	29.4	31.2	31.7	24.7	28.3
14	35.8	39.3	39.9	31.7	36.7
16	39.9	46.0	46.6	38.2	43.3
18	41.6	51.2	51.4	43.5	48.2
20	37.4	55.2	55.2	47.7	51.7
22	35.1	58.2	57.6	50.9	54.5
24	32.7	60.6	60.0	54.0	57.0
26	31.4	62.7	61.9	56.5	58.9
28	29.4	64.6	63.4	58.8	60.8
30	20.2	66.2	64.8	61.0	62.6
32	16.9	67.6	66.2	63.5	65.0

* malfunctioning thermocouple

Table 2 – The temperatures recorded by the disc thermocouples used to evaluate the maximum temperature rise of the frame/ transom members adjacent to the door leaf of Specimen A under the normal procedure. Values are in Degrees Celsius (°C) unless otherwise stated.

Time (mins)	TC6	TC7	TC8	TC9
0	15.7	16.4	16.3	16.1
2	19.6	30.7	21.0	16.2
4	18.9	29.8	22.6	16.4
6	18.8	28.9	27.7	16.6
8	18.2	27.7	32.5	16.7
10	17.8	26.3	28.7	16.8
12	17.6	25.9	29.4	16.9
14	17.6	26.0	30.6	17.1
16	17.7	27.1	33.5	17.4
18	18.0	28.4	38.2	17.7
20	18.4	29.3	39.2	18.3
22	18.8	30.5	43.4	18.9
24	19.6	32.2	47.8	19.4
26	20.3	34.7	55.3	20.1
28	21.2	37.7	61.6	20.7
30	22.2	42.0	72.3	21.4
32	24.3	44.8	108.0	22.3

Table 3 – The temperatures recorded by the disc thermocouples used to evaluate the maximum temperature rise of the door leaf of Specimen A under the normal procedure. Values are in Degrees Celsius (°C) unless otherwise stated.

Time (mins)	TC10	TC11	TC12	TC13	TC14
0	16.8	17.6	16.9	16.2	19.7
2	19.8	30.0	17.0	16.2	88.5
4	20.5	24.3	17.4	16.5	118.5
6	19.6	22.6	17.7	16.6	124.8
8	21.0	23.5	18.8	17.2	143.2
10	28.7	32.4	25.3	20.4	170.0
12	38.2	43.9	36.1	27.1	201.0
14	45.4	53.4	46.0	34.7	232.5
16	51.5	60.1	53.1	41.7	264.1
18	56.0	64.1	57.2	47.2	290.1
20	62.4	66.0	60.0	51.8	311.2
22	64.8	67.5	62.4	55.4	328.2
24	67.6	68.6	64.4	58.0	340.2
26	68.1	69.5	66.4	60.8	350.6
28	72.5	70.6	68.3	62.6	361.0
30	82.1	71.4	70.5	64.6	372.0
32	85.1	73.3	73.3	66.4	387.9

Table 4 – Table presenting the temperatures recorded by the disc thermocouples used to evaluate the maximum temperature rise of the vison panel incorporated into Specimen A under the normal procedure. Values are in Degrees Celsius (°C) unless otherwise stated.

Time (mins)	TC15	TC16	TC17
0	18.8	17.5	17.1
2	90.4	79.4	17.3
4	107.8	97.5	18.5
6	119.5	121.0	18.8
8	141.2	137.8	21.0
10	171.0	159.0	28.1
12	202.7	191.6	36.9
14	241.6	223.5	44.5
16	276.3	253.7	50.1
18	305.3	280.4	54.3
20	328.8	303.9	57.4
22	349.7	324.9	59.5
24	365.0	340.2	61.5
26	374.7	354.3	63.0
28	381.1	363.0	64.2
30	386.6	370.4	65.5
32	392.9	376.9	66.9

Table 5 – The temperatures recorded by the disc thermocouples used evaluate the mean and maximum temperature rise of the unexposed surface of Specimen B under the normal procedure. Values are in Degrees Celsius (°C) unless otherwise stated.

Time (mins)	TC17	TC18	TC19	TC20	TC21
0	17.1	14.9	15.8	16.2	16.0
2	17.3	17.0	15.6	16.2	16.2
4	18.5	21.7	15.3	16.4	16.3
6	18.8	24.3	14.8	16.6	16.7
8	21.0	28.1	15.7	17.7	17.2
10	28.1	33.0	21.8	24.4	21.7
12	36.9	38.6	29.3	34.2	30.2
14	44.5	44.7	34.9	42.2	38.1
16	50.1	51.1	38.2	47.6	44.1
18	54.3	57.7	39.8	51.1	48.3
20	57.4	64.0	39.9	53.6	51.2
22	59.5	70.4	39.6	55.5	53.1
24	61.5	76.8	39.0	57.2	54.9
26	63.0	82.8	37.8	58.7	56.5
28	64.2	88.3	37.1	60.1	57.5
30	65.5	94.2	36.3	61.5	58.8
32	66.9	100.6	34.6	63.1	60.6

Table 6 – The temperatures recorded by the disc thermocouples used to evaluate the maximum temperature rise of the frame/ transom members adjacent to the door leaf of Specimen B under the normal procedure. Values are in Degrees Celsius (°C) unless otherwise stated.

Time (mins)	TC22	TC23	TC24	TC25
0	16.0	12.4	16.1	16.9
2	21.1	12.7	20.7	30.6
4	28.0	13.3	20.8	34.3
6	37.3	13.6	33.8	32.0
8	59.0	14.0	54.3	30.8
10	66.2	14.1	40.1	30.3
12	63.5	13.9	47.0	29.2
14	59.7	36.2	40.6	28.5
16	55.1	37.9	37.5	27.8
18	58.2	40.0	37.8	29.3
20	56.5	43.1	39.1	34.2
22	57.4	47.4	40.9	35.8
24	65.5	56.6	42.7	40.9
26	72.5	65.3	44.7	47.0
28	78.1	76.8	46.7	54.9
30	79.6	84.2	50.8	68.3
32	84.6	92.0	57.0	139.7





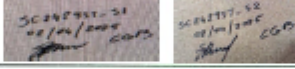
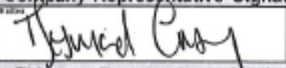

Table 7 – The temperatures recorded by the disc thermocouples used to evaluate the maximum temperature rise of the door leaf of Specimen B under the normal procedure. Values are in Degrees Celsius (°C) unless otherwise stated.

Time (mins)	TC26	TC27	TC28	TC29
0	16.6	17.0	16.7	16.5
2	16.7	17.2	19.9	17.8
4	19.6	20.1	19.7	18.1
6	20.6	19.9	19.7	18.5
8	20.8	21.5	21.2	19.7
10	25.2	25.7	26.8	25.6
12	32.0	32.8	35.2	34.5
14	38.6	39.8	43.6	42.7
16	44.3	46.3	50.8	49.2
18	49.0	51.9	55.9	53.8
20	52.9	56.5	60.0	57.5
22	56.0	59.7	63.4	60.1
24	58.5	62.4	65.3	62.4
26	60.7	64.3	67.2	64.1
28	62.4	65.8	68.5	65.6
30	64.4	67.2	70.2	67.4
32	65.9	68.4	71.9	69.4

Table 8 – Table presenting the temperatures recorded by the disc thermocouples used to evaluate the maximum temperature rise of the vison panel incorporated into Specimen B under the normal procedure. Values are in Degrees Celsius (°C) unless otherwise stated.

Time (mins)	TC30	TC31	TC32
0	19.6	9.4	18.2
2	91.2	-62.1	90.5
4	106.6	-92.5	114.4
6	122.1	-95.9	136.6
8	140.6	-9999.0	179.4
10	164.0	139.1	229.2
12	190.7	162.2	276.3
14	218.8	191.6	315.3
16	249.1	219.3	349.0
18	274.9	251.7	376.4
20	295.3	278.7	390.9
22	313.4	302.8	400.3
24	326.2	323.1	408.5
26	338.3	342.8	418.1
28	349.7	362.3	426.5
30	360.5	380.9	434.9
32	371.3	395.6	443.6

Appendix A Sample Report

 <p>Proud to be part of </p>		SAMPLING VISIT REPORT		Company Name Exitex UK Sales LTD
				Customer ID. E002626
				BM TRADA Approved Body ID: 1224
Company Head Office Address Exitex UK Sales LTD St Johns Chambers Love St Chester CH1 1QN	Contact Name Des Gray / Mark Thorne	Telephone 		
	Email Address Des.Gray@exitex.com			
Location where sampling was conducted if different from Head Office Address Dorsuite, Roman House Granitahill Road, Northfield, Aberdeen AB16 7AW			Visit Date 25/03/2025 (videoed) 01/04/2025	BMT Representative Chris Blount Chris Blount
Requirement	Evidence / Comments			
Opening Meeting (names of those present)	Robertas Zioba & Achilles Sarrigiannidis (Dorsuite) / Chris Blount (BM TRADA)			
Sampling Contract Reference	SC24295T			
Technical Specification document / FoA reference				
Description of product(s) sampled	2Nr Single Doorsets 1000mm x 2400mm (S1 & S2) - Falcon Strebord 44mm door leaf glazed Pyroguard 1 EW30/7-1 glass, Exitex glazing system and sapole chamfered bevelled bead. Door leaf lipped with sapole lippings fitted with 4Nr hinges, latch (disengaged for test), lever handles, drop down seal and face fix closer. Hung in a Redwood frame with MDF stop fitted with 1Nr 15mm x 4mm intumescent strip and fitted with door latch.			
Batch number(s) / Product identification				
Date of manufacture	25/03/2025 - Door marking, sizing, lipping & prep (process video) 01/04/2025 - Doorset Assembly S1 & S2			
Traceability of material records i.e. Purchase Orders and delivery notes	SO 5225910 - Falcon Timber - Falcon Strebord cores - 03/02/2025 DN S-497831-1 - Exitex - Hinge Intumescent, dropseals, glazing system - 29/01/2025 DN S-497859-1 - Exitex - Frame Intumescent - 29/01/2025 PO 93200 - Philip A Cheshire Ltd - Lipping profiles - 10/12/2024 All purchase orders held on file by BM TRADA.			
Example of sampler's markings applied to the product(s) (contract reference, signature/initials of sampler, date of manufacture)				
Confirmation of minimum mandatory video/live checks undertaken	<input type="checkbox"/> Glazing assembly (where applicable)	<input checked="" type="checkbox"/> Finished doorset with markings		
	<input checked="" type="checkbox"/> Hardware prep and fitting (where applicable)	<input checked="" type="checkbox"/> Sampling pack discussion		
Details of any further FPC processes witnessed during the visit.	None			
Determine the essential characteristics of the product and confirm the details of in-process checks conducted on the sample to ensure conformity.	2Nr Single Doorsets 1000mm x 2400mm (S1 & S2) - Falcon Strebord 44mm door leaf glazed Pyroguard 1 EW30/7-1 glass, Exitex glazing system (Exi-glace 30 with Exitex Fire Rated mastic) and sapole chamfered bevelled bead. Door leaf lipped with sapole lippings fitted with 4Nr Eurospec HIN1433P135SSR hinges (Exitex 1mm graphite intumescent to blades), Zoo (Delta) PRTL76FD-RSS tubular latch (Exitex 1mm graphite intumescent to forend, body & keep - latch disengaged for test), Zoo ZC5030SS lever handles, Exitex Concealex AB100 Superior drop down seal and Rutland TS.9205 face fix closer. Hung in a redwood frame fitted with 1Nr 15mm x 4mm intumescent strip, MDF planted door stop and door latch. Door closer and final fitting of stops to be sampled at test lab.			
State any items from the Technical Specification / FoA that were not witnessed and require further lab sampling	<input type="checkbox"/> Side screen / overpanel <input checked="" type="checkbox"/> Door closer	<input type="checkbox"/> Handles <input type="checkbox"/> Frame re-assembly	<input checked="" type="checkbox"/> Other (see tech spec marked with 'not seen')	
Confirm any clauses within the Technical Specification that were found to be different on the sampled products. Non-conformances may be raised for pre-cert and audit test sampling	SC24295T TS T - Technical Specification - FD30 Single Timber doorset - Iss 4 240722_Verified by CGB 010425 amended to the following sections from original Technical Specification; 1, 4, 5, 6, 7, 8, 9, 10, 11, 13, 14 and 15			
Closing Meeting (names of those present)	Robertas Zioba & Achilles Sarrigiannidis (Dorsuite) / Chris Blount (BM TRADA)			
Company Representative Name (Print)		Declaration for the Company		
DESMOND GRAY	Achilles Sarrigiannidis	I declare that the product/s witnessed during this sampling visit are representative of normal production.		
Company Representative Position		No changes will be made prior to delivery to the test laboratory.		
Sales Director	R&D Manager			
Company Representative Signature		BM TRADA Representative Signature		
				
This sampling report remains the property of BM TRADA. BM TRADA shall keep confidential all information relating to the sampling process and your organisation and shall not disclose such information to any third party except as required by law or by BM TRADA's Accreditation Bodies. This sampling report will be shared with others within Warringtonfire Testing and Certification Ltd.				