

Sponsor:

Quelfire Ltd
Unit 4 Spitfire Road
Wardle
Nantwich
Cheshire
CW5 6HT



Solutions

Prepared by:

UL International (UK) Ltd

Approved body No.:

0843

Product Name:

QI Intufoam

Project No.:

4791799218

Report No.:

4791799218-01

Issue number:

01

Date of Issue:

17th November 2025

Copyright © 2025 UL LLC.

UL International (UK) Ltd.
220, Cygnet Court, Centre Park, Warrington. WA1 1PP

This classification report consists of twenty-six pages and may only be used or reproduced in its entirety.



TABLE OF CONTENTS

1. Introduction	3
2. Details of classification product	3
3. Test reports in support of classification.....	3
4. Classification and field of application	5
5. Limitations	26
6. Signatories.....	26

1. Introduction

This classification report defines the classification assigned to the element QI Intufoam, in accordance with the procedures given in BS EN 13501-2: 2023.

2. Details of classification product

2.1 General

The element QI Intufoam is defined as a fire resisting linear gap sealing system to be used to reinstate the performance of floors and / or walls.

2.2 Product description

The element QI Intufoam is fully described in the test reports provided in support of classification detailed in clause 3.1.

3. Test reports in support of classification

3.1 Summary of test reports

Name of laboratory	Name of sponsor	Test Date	Report Number	Test method
Warringtonfire - Notified Body No. 0833	Quelfire Ltd	14/08/2020	WF No. 430854/R	BS EN 1366-4: 2006+A1: 2010
		27/08/2020	WF No. 430858/R	
		21/04/2022	WF No. 511732/R	BS EN 1366-4: 2021

3.2 Results

Summary of report No.: WF No. 430854/R

A fire resistance test in accordance with BS EN 1366-4: 2006+A1: 2010, on linear joint seals installed in a 100 mm thick rigid wall and a 150 mm thick rigid floor supporting construction.

Orientation	Specimen	Integrity (minutes)		Insulation (minutes)
		Cotton pad	Sustained flames	
Wall Specimens	A	110	111	63
	B	74	76	42
	C	106	108	32
	D	89	90	54
Floor Specimens	E	89	108	19
	F	65	66	29
	G	73	75	45
	H	94	108	77
	I	79	90	41

Summary of report No.: WF No. 430858/R

A fire resistance test in accordance with BS EN 1366-4: 2006+A1: 2010, on linear joint seals installed in a 150 mm thick rigid floor supporting construction.

Specimen	Integrity (minutes)		Insulation (minutes)
	Cotton pad	Sustained flames	
A	155	155	122
B	86	88	78

Summary of report No.: WF No. 511732/R

A fire resistance test in accordance with BS EN 1366-4: 2006+A1: 2010, on linear joint seals installed in a 100 mm thick rigid wall and floor supporting construction.

Orientation	Specimen	Integrity (minutes)		Insulation (minutes)
		Cotton pad	Sustained flames	
Floor Specimens	A	132	132	132
	B	132	132	41
	C	132	132	132
	D	132	132	122
	E	114	114	106
	F	119	119	101

Orientation	Specimen	Integrity (minutes)		Insulation (minutes)
		Cotton pad	Sustained flames	
Wall Specimens	G	132	132	109
	H	129	129	120
	I	132	132	110
	J	132	132	119

4. Classification and field of application

4.1 Reference of classification



This classification has been carried out in accordance with Clause 7 of EN 13501-2: 2023.

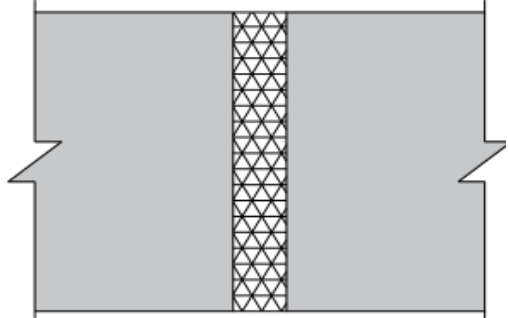
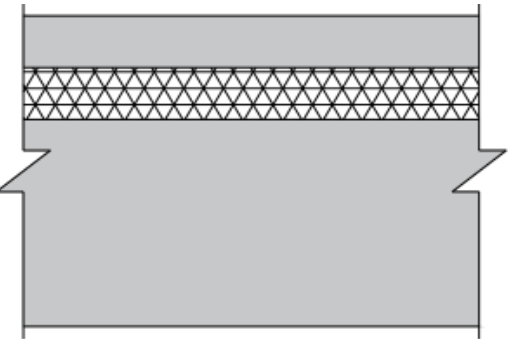
4.2 Classification

The element, product name QI Intufoam is classified according to the following combinations of performance parameters and classes as appropriate.

R	E	I	W		t	t	-	M	S	-	C	IncSlow	sn	ef	r
---	---	---	---	--	---	---	---	---	---	---	---	---------	----	----	---

Minimum 100 mm thick rigid walls

Supporting Construction Details	
	The following rigid walls details can be used on walls comprising of masonry, blockwork, concrete or aerated concrete that have a minimum density of 670kg/m ³ *
	Rigid walls to have a minimum thickness of 100 mm*
*- Refer to the Field of Direct application section at back of document	

Seal Position	
Vertical	
Horizontal	

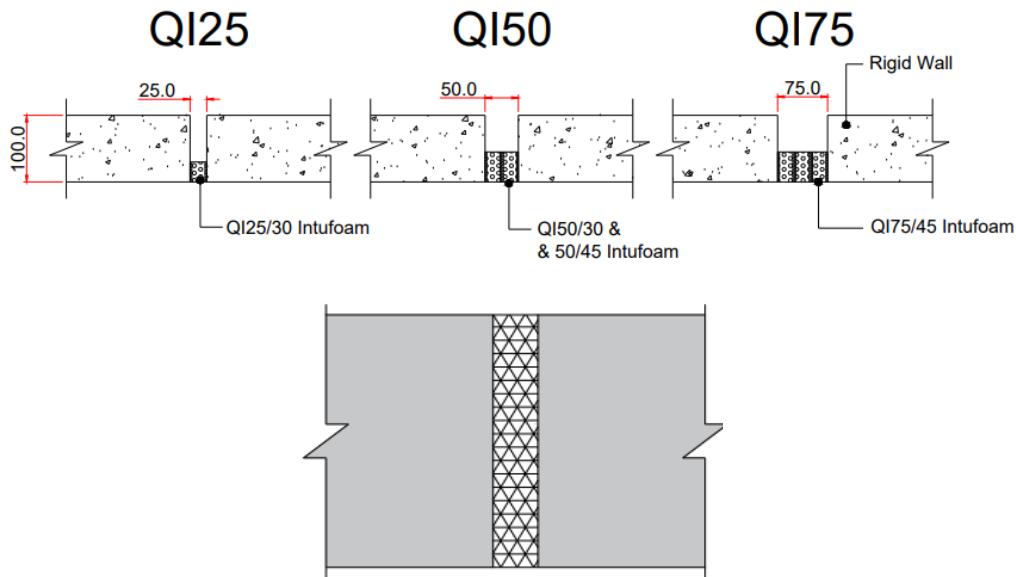
Test Condition	Designation Symbol
Integrity	E
Insulation	I
Horizontal Supporting Construction	H
Vertical Supporting Construction - Vertical	V
Vertical Supporting Construction - Horizontal	T
No Movement Capability	X
Movement Capability (%)	M00
Joint Width Range (mm)	W w1 to w2
Manufactured Splice	M
Field Splice	F
Manufactured and field Splice	B

Vertical Linear Gap seal: Single Piece of QI Intufoam

The rigid wall to have a minimum thickness of 100 mm and be comprised of masonry, blockwork, concrete or aerated concrete with a minimum density of 670kg/m³.

Quelfire Detail Reference:	QI-LJ-V-02
Quelfire Detail Page No.	1
Substrate minimum thickness:	100 mm
Drawing Scale:	Not to Scale

Quelfire Products Required	
Product Code	Description
QI 25/30	QI Intufoam to suit gaps up to 25 mm
QI 50/30	QI Intufoam to suit gaps up to 50 mm
QI 50/45	QI Intufoam to suit gaps up to 50 mm
QI 75/45	QI Intufoam to suit gaps up to 75 mm

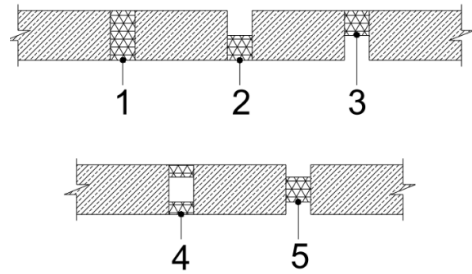


Installation Instructions

The Intufoam can be installed into the wall as per positions 2, 3 and 5:

Intufoam is supplied in 1 metre lengths and simply compressed by hand and inserted into the linear gap where they will then expand holding themselves in place.

Individual lengths should be installed with a tight butt joint, end to end.



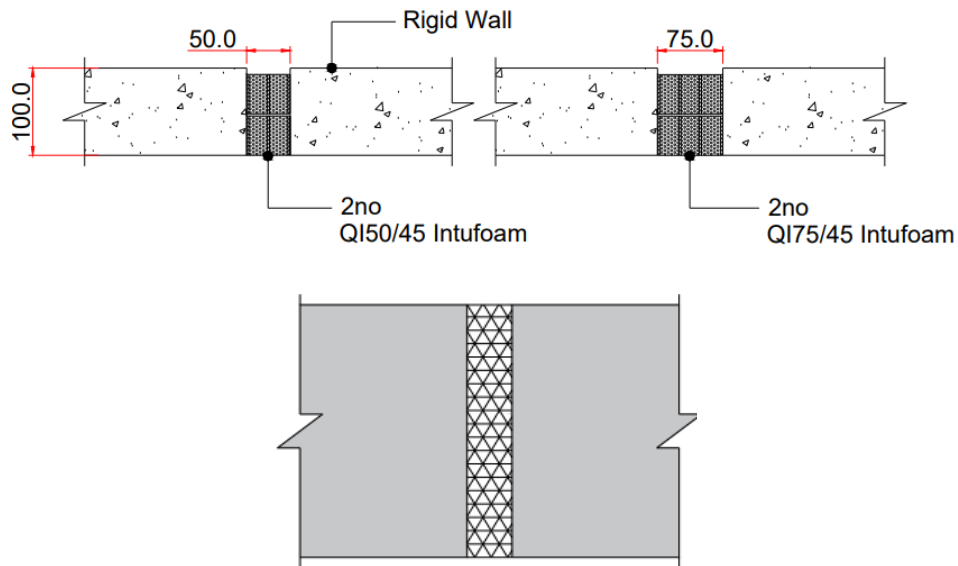
Product	Classification
QI25/30	E 90 - V - X - F - W 10 to 28, EI 60 - V - X - F - W 10 to 28
QI50/30	E 60 - V - X - F - W 25 to 56, EI 30 - V - X - F - W 25 to 56
QI50/45	E 90 - V - X - F - W 25 to 56, EI 30 - V - X - F - W 25 to 56
QI75/45	E 60 - V - X - F - W 40 to 85, EI 45 - V - X - F - W 40 to 85

The manufacturer states that the movement of QI Intufoam cannot be designated as a percentage.

Vertical Linear Gap seal: Double Piece of QI Intufoam

The rigid wall to have a minimum thickness of 100 mm and be comprised of masonry, blockwork, concrete or aerated concrete with a minimum density of 670kg/m³.

Quelfire Detail Reference:	QI-LJ-V-02	Quelfire Products Required	
Quelfire Detail Page No.	2	Product Code	Description
Substrate minimum thickness:	100 mm	QI 50/45	QI Intufoam to suit gaps up to 50 mm
Drawing Scale:	Not to Scale	QI 75/45	QI Intufoam to suit gaps up to 75 mm

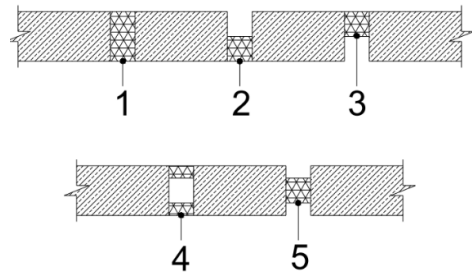


Installation Instructions

The Intufoam can be installed into the wall as per position 2, 3 and 5:

Intufoam is supplied in 1 metre lengths and simply compressed by hand and inserted into the linear gap where they will then expand holding themselves in place.

Individual lengths should be installed with a tight butt joint, end to end.



Product	Classification
QI50/45	E 120 - V - X - F - W 25 to 50, EI 90 - V - X - F - W 25 to 50
QI75/45	E 120 - V - X - F - W 40 to 75, EI 90 - V - X - F - W 40 to 75

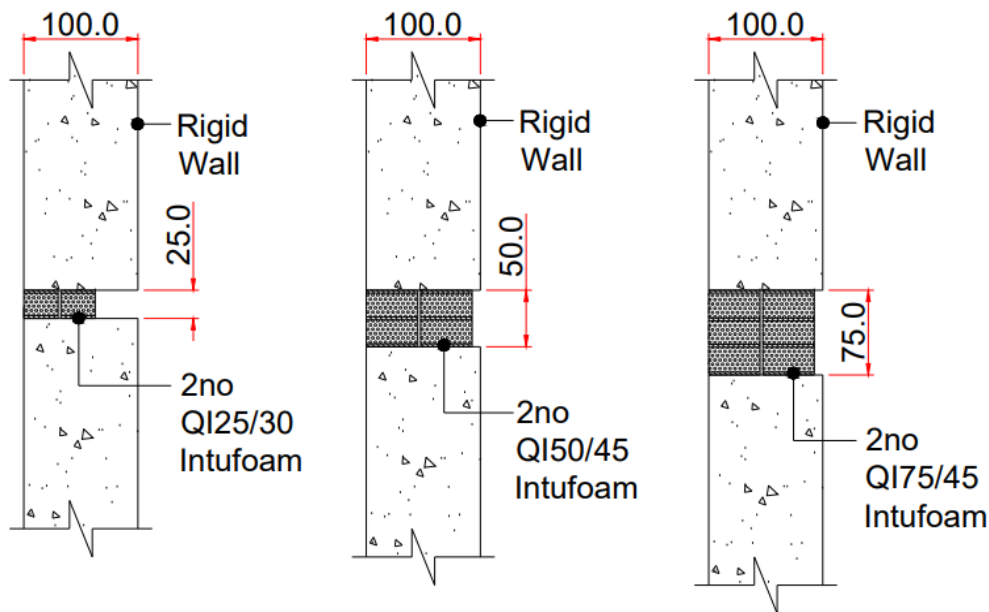
The manufacturer states that the movement of QI Intufoam cannot be designated as a percentage.

Horizontal Linear Gap seal: Double Piece of QI Intufoam

The rigid wall to have a minimum thickness of 100 mm and be comprised of masonry, blockwork, concrete or aerated concrete with a minimum density of 670kg/m³.

Quelfire Detail Reference:	QI-LJ-T-02b
Quelfire Detail Page No.	1
Substrate minimum thickness:	100 mm
Drawing Scale:	Not to Scale

Quelfire Products Required	
Product Code	Description
QI 25/30	QI Intufoam to suit gaps up to 25mm
QI 50/45	QI Intufoam to suit gaps up to 50mm
QI 75/45	QI Intufoam to suit gaps up to 75mm

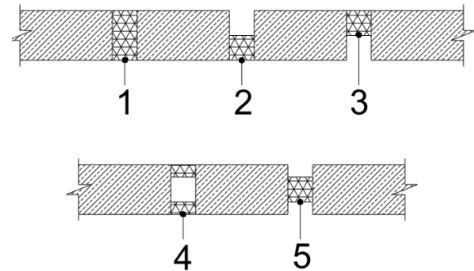


Installation Instructions

The Intufoam can be installed into the wall as per position 2, 3 and 5:

Intufoam is supplied in 1 metre lengths and simply compressed by hand and inserted into the linear gap where they will then expand holding themselves in place.



Individual lengths should be installed with a tight butt joint, end to end.

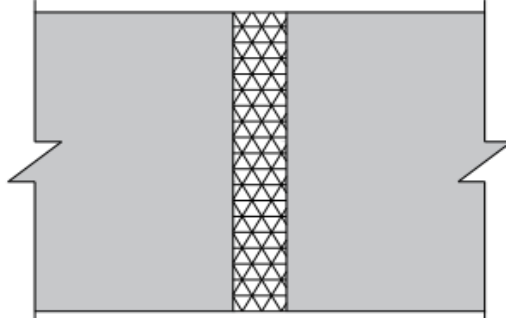
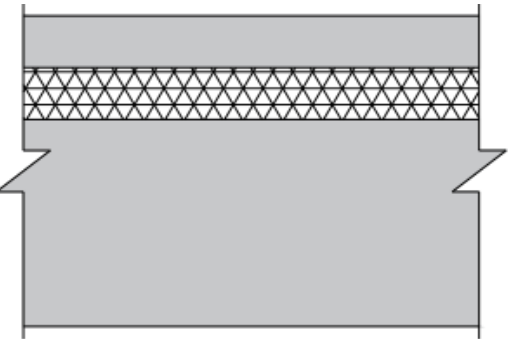


Product	Classification
QI25/30	E 120 - T - X - F - W 10 to 25, EI 30 - T - X - F - W 10 to 25
QI50/45	EI 120 - T - X - F - W 25 to 50
QI75/45	EI 90 - T - X - F - W 40 to 75

The manufacturer states that the movement of QI Intufoam cannot be designated as a percentage.

Minimum 150 mm thick rigid walls

Supporting Construction Details	
	The following rigid walls details can be used on walls comprising of masonry, blockwork, concrete or aerated concrete that have a minimum density of 670kg/m ³ *
	Rigid walls to have a minimum thickness of 150 mm*
*- Refer to the Field of Direct application section at back of document	

Seal Position	
Vertical	
Horizontal	

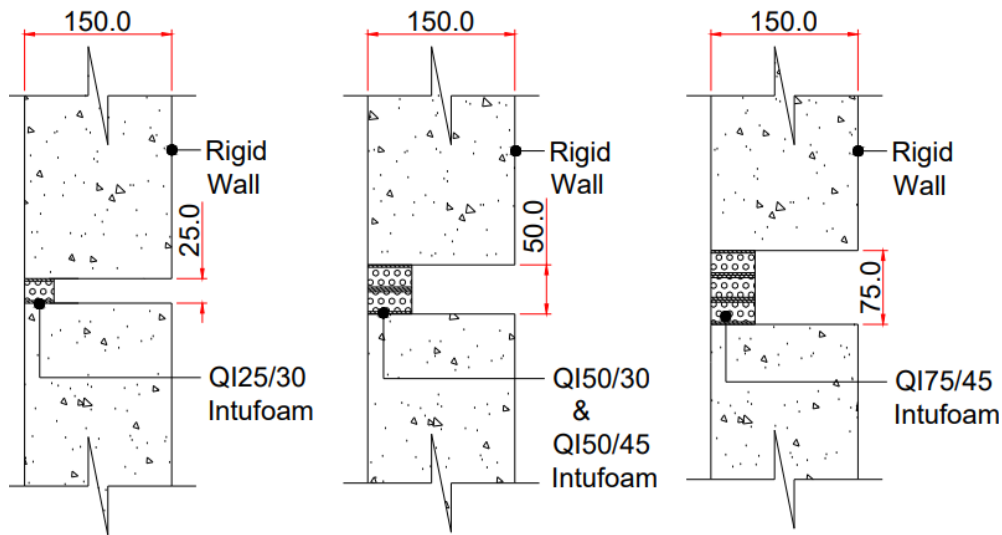
Test Condition	Designation Symbol
Integrity	E
Insulation	I
Horizontal Supporting Construction	H
Vertical Supporting Construction - Vertical	V
Vertical Supporting Construction - Horizontal	T
No Movement Capability	X
Movement Capability (%)	M00
Joint Width Range (mm)	W w1 to w2
Manufactured Splice	M
Field Splice	F
Manufactured and field Splice	B

Horizontal Linear Gap seal: Single Piece of QI Intufoam

The rigid wall to have a minimum thickness of 150 mm and be comprised of masonry, blockwork, concrete or aerated concrete with a minimum density of 670kg/m³.

Quelfire Detail Reference:	QI-LJ-T-02b
Quelfire Detail Page No.	2
Substrate minimum thickness:	150 mm
Drawing Scale:	Not to Scale

Quelfire Products Required	
Product Code	Description
QI 25/30	QI Intufoam to suit gaps up to 25mm
QI 50/30	QI Intufoam to suit gaps up to 50mm
QI 50/45	QI Intufoam to suit gaps up to 50mm
QI 75/45	QI Intufoam to suit gaps up to 75mm

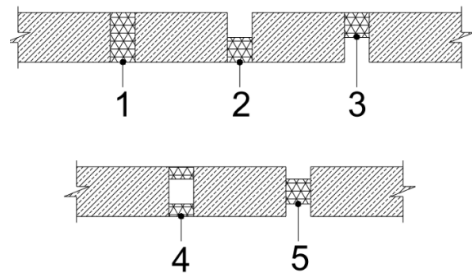


Installation Instructions

The Intufoam can be installed into the wall as per position 2, 3 and 5:

Intufoam is supplied in 1 metre lengths and simply compressed by hand and inserted into the linear gap where they will then expand holding themselves in place.

Individual lengths should be installed with a tight butt joint, end to end.



Product	Classification
QI25/30	E 60 - T - X - F - W 10 to 28, EI 15 - T - X - F - W 10 to 28
QI50/30	E 60 - T - X - F - W 25 to 56, EI 15 - T - X - F - W 25 to 56
QI50/45	E 90 - T - X - F - W 25 to 56, EI 60 - T - X - F - W 25 to 56
QI75/45	E 60 - T - X - F - W 40 to 85, EI 30 - T - X - F - W 40 to 85

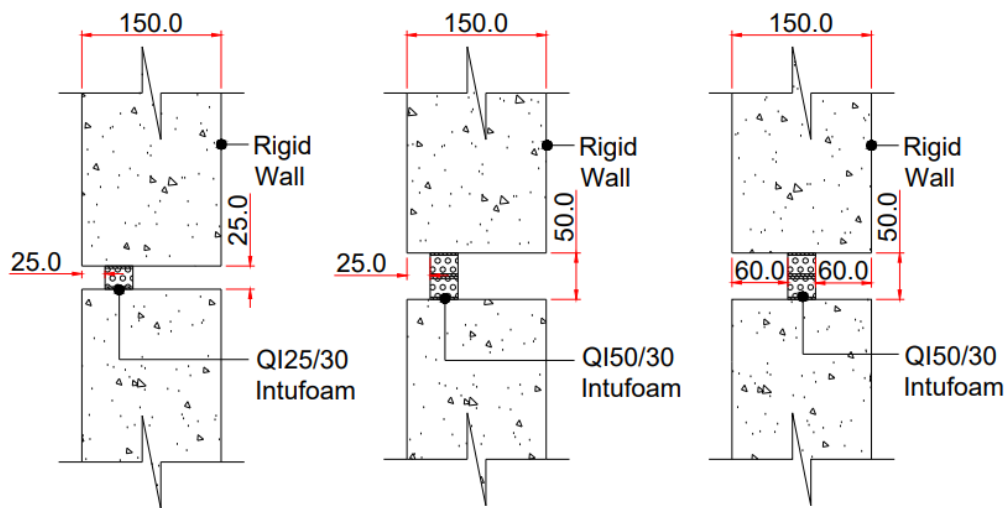
The manufacturer states that the movement of QI Intufoam cannot be designated as a percentage.

Horizontal Linear Gap seal: Single Piece of QI Intufoam

The rigid wall to have a minimum thickness of 150 mm and be comprised of masonry, blockwork, concrete or aerated concrete with a minimum density of 670kg/m³.

Quelfire Detail Reference:	QI-LJ-T-02b
Quelfire Detail Page No.	3
Substrate minimum thickness:	150 mm
Drawing Scale:	Not to Scale

Quelfire Products Required	
Product Code	Description
QI 25/30	QI Intufoam to suit gaps up to 25mm
QI 50/30	QI Intufoam to suit gaps up to 50mm

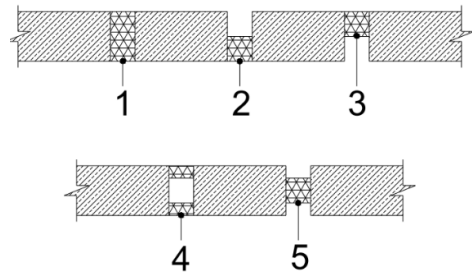


Installation Instructions

The Intufoam must be installed in the position stated below from the face of the outer wall. As this Linear gap was tested as position 5 shown to the right, the test results only cover this position type.

Intufoam is supplied in 1 metre lengths and simply compressed by hand and inserted into the linear gap where they will then expand holding themselves in place.

Individual lengths should be installed with a tight butt joint, end to end.



Product	Position from face of wall on one side only	Classification
QI25/30	25mm	EI 120 - T - X - F - W 10 to 25
QI50/30	25mm	EI 60 - T - X - F - W 25 to 50
QI50/30	60mm	E 60 - T - X - F - W 25 to 56, EI 45 - T - X - F - W 25 to 56

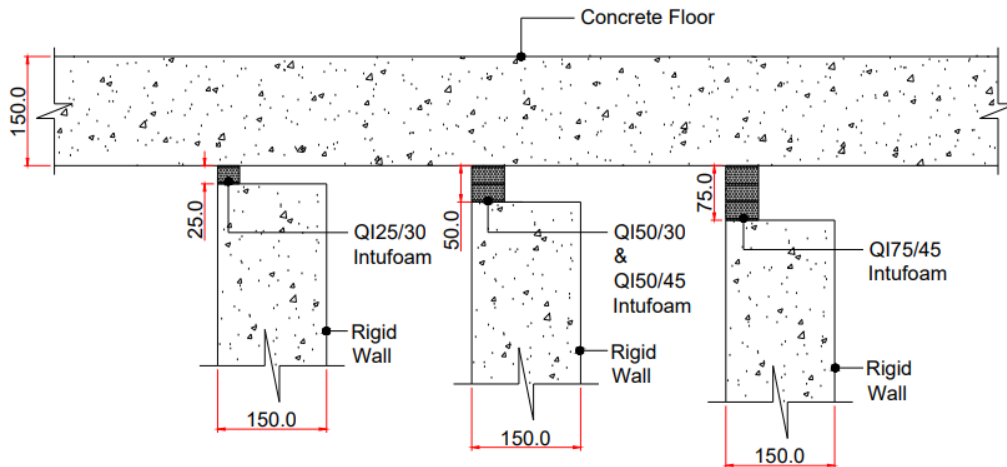
The manufacturer states that the movement of QI Intufoam cannot be designated as a percentage.

Head of wall Linear Gap seal: Single Piece of QI Intufoam

The rigid wall and floor to have a minimum thickness of 150 mm and be comprised of masonry, blockwork, concrete or aerated concrete with a minimum density of 670kg/m³.

Quelfire Detail Reference:	QI-LJ-T-02a
Quelfire Detail Page No.	2
Substrate minimum thickness:	150 mm
Drawing Scale:	Not to Scale

Quelfire Products Required	
Product Code	Description
QI 25/30	QI Intufoam to suit gaps up to 25mm
QI 50/30	QI Intufoam to suit gaps up to 50mm
QI 50/45	QI Intufoam to suit gaps up to 50mm
QI 75/45	QI Intufoam to suit gaps up to 75mm

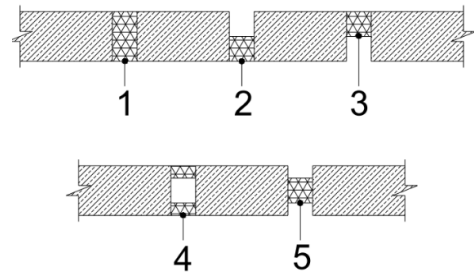


Installation Instructions

The Intufoam can be installed into the wall as per position 2, 3 and 5:

Intufoam is supplied in 1 metre lengths and simply compressed by hand and inserted into the linear gap where they will then expand holding themselves in place.

Individual lengths should be installed with a tight butt joint, end to end.



Product	Classification
QI25/30	E 60 - T - X - F - W 10 to 28, EI 15 - T - X - F - W 10 to 28
QI50/30	E 60 - T - X - F - W 25 to 56, EI 15 - T - X - F - W 25 to 56
QI50/45	E 90 - T - X - F - W 25 to 56, EI 60 - T - X - F - W 25 to 56
QI75/45	E 60 - T - X - F - W 40 to 85, EI 30 - T - X - F - W 40 to 85

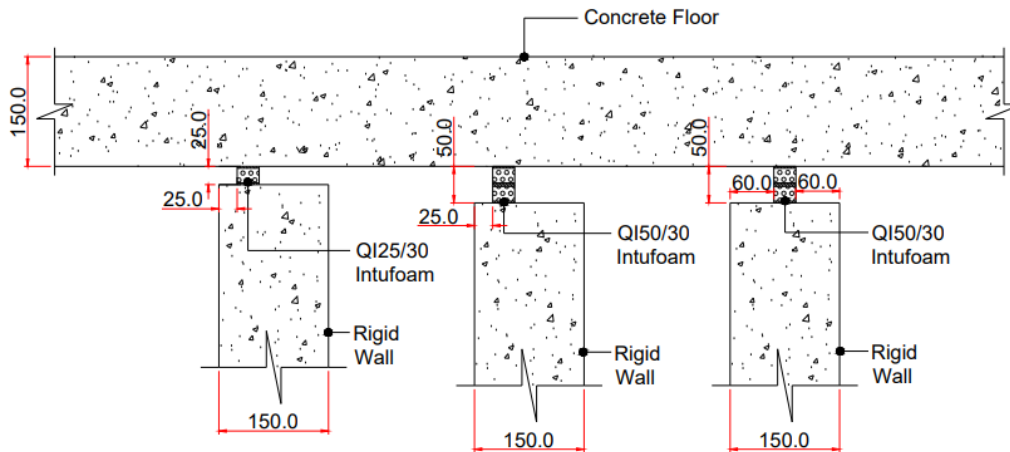
The manufacturer states that the movement of QI Intufoam cannot be designated as a percentage.

Head of wall Linear Gap seal: Single Piece of QI Intufoam

The rigid wall and floor to have a minimum thickness of 150 mm and be comprised of masonry, blockwork, concrete or aerated concrete with a minimum density of 670kg/m³.

Quelfire Detail Reference:	QI-LJ-T-02a
Quelfire Detail Page No.	3
Substrate minimum thickness:	150 mm
Drawing Scale:	Not to Scale

Quelfire Products Required	
Product Code	Description
QI 25/30	QI Intufoam to suit gaps up to 25mm
QI 50/30	QI Intufoam to suit gaps up to 50mm

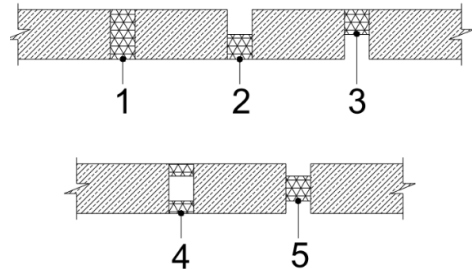


Installation Instructions

The Intufoam must be installed in the position stated below from the face of the outer wall. As this Linear gap was tested as position 5 shown to the right, the test results only cover this position type.

Intufoam is supplied in 1 metre lengths and simply compressed by hand and inserted into the linear gap where they will then expand holding themselves in place.



Individual lengths should be installed with a tight butt joint, end to end.

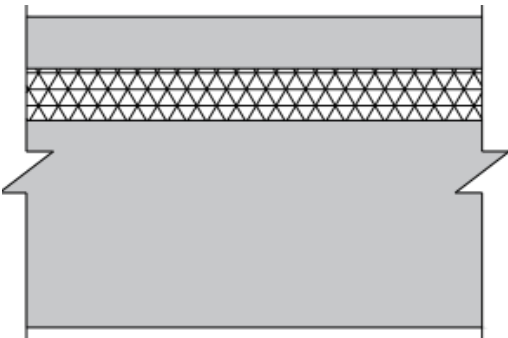


Product	Position from face of wall on one side only	Classification
QI25/30	25mm	EI 120 - T - X - F - W 10 to 25
QI50/30	25mm	EI 60 - T - X - F - W 25 to 50
QI50/30	60mm	E 60 - T - X - F - W 25 to 56, EI 45 - T - X - F - W 25 to 56

The manufacturer states that the movement of QI Intufoam cannot be designated as a percentage.

Minimum 100 mm thick rigid floors

Supporting Construction Details	
	The following rigid floor details can be used on floors comprising of masonry, blockwork, concrete or aerated concrete that have a minimum density of 670kg/m ³ *
	Rigid floors to have a minimum thickness of 100 mm*
*- Refer to the Field of Direct application section at back of document	

Seal Position	
Horizontal	

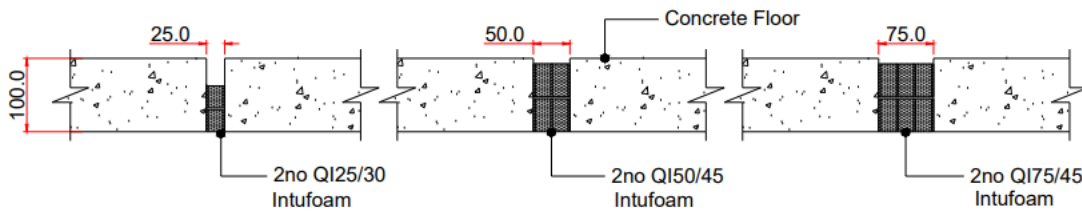
Test Condition	Designation Symbol
Integrity	E
Insulation	I
Horizontal Supporting Construction	H
Vertical Supporting Construction - Vertical	V
Vertical Supporting Construction - Horizontal	T
No Movement Capability	X
Movement Capability (%)	M00
Joint Width Range (mm)	W w1 to w2
Manufactured Splice	M
Field Splice	F
Manufactured and field Splice	B

Horizontal Linear Gap seal: Double Piece of QI Intufoam

The rigid floor to have a minimum thickness of 100 mm and be comprised of masonry, blockwork, concrete or aerated concrete with a minimum density of 670kg/m³.

Quelfire Detail Reference:	QI-LJ-H-02
Quelfire Detail Page No.	1
Substrate minimum thickness:	100 mm
Drawing Scale:	Not to Scale

Quelfire Products Required	
Product Code	Description
QI 25/30	QI Intufoam to suit gaps up to 25 mm
QI 50/45	QI Intufoam to suit gaps up to 50 mm
QI 75/45	QI Intufoam to suit gaps up to 75 mm

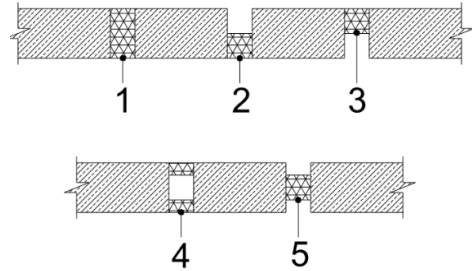


Installation Instructions

The Intufoam can be installed into the floor as per positions 2, 3 and 5:

Intufoam is supplied in 1 metre lengths and simply compressed by hand and inserted into the linear gap where they will then expand holding themselves in place.



Individual lengths should be installed with a tight butt joint, end to end.

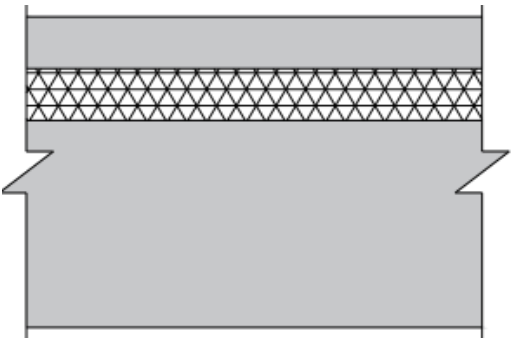


Product	Classification
QI25/30	E 120 - H - X - F - W 10 to 25, EI 30 - H - X - F - W 10 to 25
QI50/45	EI 120 - H - X - F - W 25 to 50
QI75/45	EI 90 - H - X - F - W 40 to 75

The manufacturer states that the movement of QI Intufoam cannot be designated as a percentage.

Minimum 150 mm thick rigid floors

Supporting Construction Details	
	The following rigid floor details can be used on floors comprising of masonry, blockwork, concrete or aerated concrete that have a minimum density of 670kg/m ³ *
	Rigid floors to have a minimum thickness of 150 mm*
*- Refer to the Field of Direct application section at back of document	

Seal Position	
Horizontal	

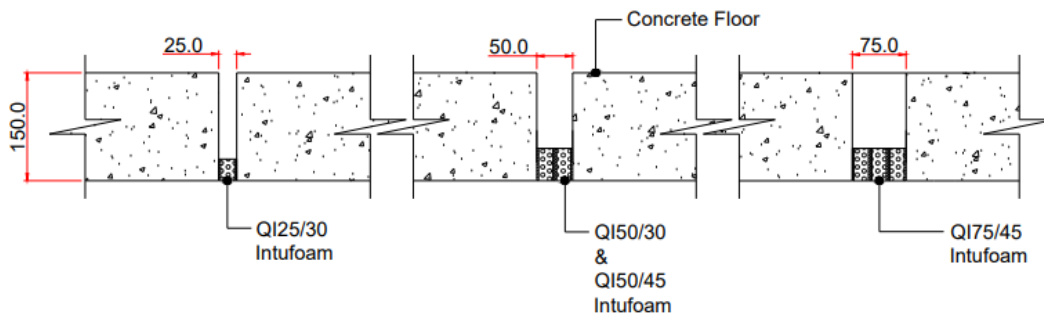
Test Condition	Designation Symbol
Integrity	E
Insulation	I
Horizontal Supporting Construction	H
Vertical Supporting Construction - Vertical	V
Vertical Supporting Construction - Horizontal	T
No Movement Capability	X
Movement Capability (%)	M00
Joint Width Range (mm)	W w1 to w2
Manufactured Splice	M
Field Splice	F
Manufactured and field Splice	B

Horizontal Linear Gap seal: Single Piece of QI Intufoam

The rigid floor to have a minimum thickness of 150 mm and be comprised of masonry, blockwork, concrete or aerated concrete with a minimum density of 670kg/m³.

Quelfire Detail Reference:	QI-LJ-H-02
Quelfire Detail Page No.	2
Substrate minimum thickness:	150 mm
Drawing Scale:	Not to Scale

Quelfire Products Required	
Product Code	Description
QI 25/30	QI Intufoam to suit gaps up to 25 mm
QI 50/30	QI Intufoam to suit gaps up to 50 mm
QI 50/45	QI Intufoam to suit gaps up to 50 mm
QI 75/45	QI Intufoam to suit gaps up to 75 mm

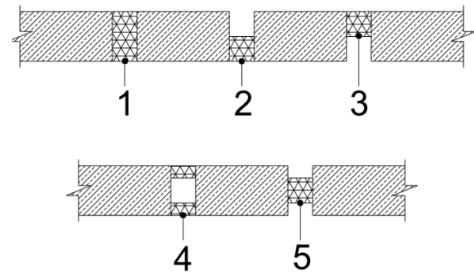


Installation Instructions

The Intufoam can be installed into the floor as per positions 2, 3 and 5:

Intufoam is supplied in 1 metre lengths and simply compressed by hand and inserted into the linear gap where they will then expand holding themselves in place.

Individual lengths should be installed with a tight butt joint, end to end.



Product	Classification
QI25/30	E 60 - H - X - F - W 10 to 28, EI 15 - H - X - F - W 10 to 28
QI50/30	E 60 - H - X - F - W 25 to 56, EI 15 - H - X - F - W 25 to 56
QI50/45	E 90 - H - X - F - W 25 to 56, EI 60 - H - X - F - W 25 to 56
QI75/45	E 60 - H - X - F - W 40 to 85, EI 30 - H - X - F - W 40 to 85

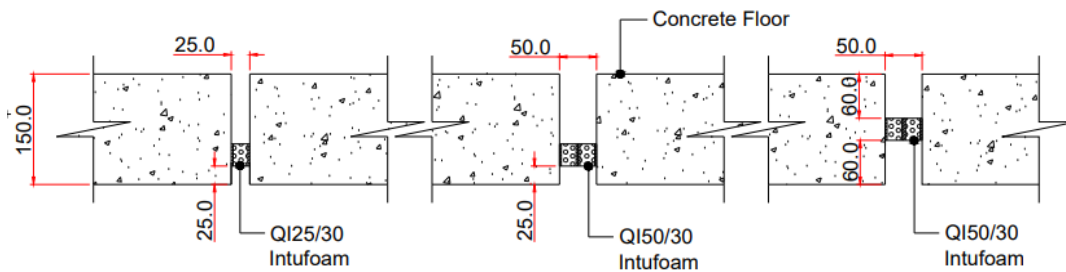
The manufacturer states that the movement of QI Intufoam cannot be designated as a percentage.

Horizontal Linear Gap seal: Single Piece of QI Intufoam

The rigid floor to have a minimum thickness of 150 mm and be comprised of masonry, blockwork, concrete or aerated concrete with a minimum density of 670kg/m³.

Quelfire Detail Reference:	QI-LJ-H-02a
Quelfire Detail Page No.	3
Substrate minimum thickness:	150 mm
Drawing Scale:	Not to Scale

Quelfire Products Required	
Product Code	Description
QI 25/30	QI Intufoam to suit gaps up to 25 mm
QI 50/30	QI Intufoam to suit gaps up to 50 mm

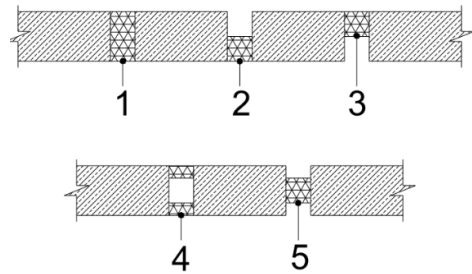


Installation Instructions

The Intufoam must be installed in the position stated below from the face of the outer wall. As this Linear gap was tested as position 5 shown to the right, the test results only cover this position type.

Intufoam is supplied in 1 metre lengths and simply compressed by hand and inserted into the linear gap where they will then expand holding themselves in place.

Individual lengths should be installed with a tight butt joint, end to end.



Product	Position from face of wall on one side only	Classification
QI25/30	25mm	EI 120 - H - X - F - W 10 to 25
QI50/30	25mm	EI 60 - H - X - F - W 25 to 50
QI50/30	60mm	E 60 - H - X - F - W 25 to 56, EI 45 - H - X - F - W 25 to 56

The manufacturer states that the movement of QI Intufoam cannot be designated as a percentage.

4.3 Field of Application – Linear Joint Seals EN 1366-4: 2006

This classification is valid for the following end use applications (as defined in EN1366-4: 2006, referencing the following appropriate clauses of EN1366-3: 2006).

4.3.1 General Rules

13.1 Orientation

The field of application regarding the orientation of the linear joint is given in Table 1. The possible orientation of linear joints (A to E and of the specimens in the test (A to C) is illustrated in Figure 12.

Table 1 – Field of application regarding orientation

Tested orientation	Application
A	A, D, E^a
B	B
C	C, D^b
a Orientation E will only be covered by test orientation A if shear movement was chosen and one face of the joint was fixed and the other face was moved. b Orientation D will only be covered by test orientation C if shear movement was chosen and one face of the joint was fixed and the other face was moved.	

Key

A linear joint in a horizontal test construction

B vertical linear joint in a vertical test construction

C horizontal linear joint in a vertical test construction

D horizontal wall joint abutting a floor, ceiling or roof

E horizontal floor joint abutting a wall

Table 1 only applies when both the supporting construction and the location of the seal within the linear joint remain unchanged. See 13.3.

13.2 Supporting construction

Results obtained with autoclaved aerated concrete standard supporting constructions apply to concrete, blockwork and masonry separating elements of a thickness and density equal to or greater than that tested.

Results obtained with normal concrete standard supporting constructions apply to concrete and block work separating elements of a thickness and density equal to or greater than that tested.

Results obtained with a combination of a standard supporting construction as described in 7.2.2.1 and a standard supporting construction as described in 7.2.2.3 apply to concrete, block work and masonry separating elements of a thickness and density equal to or greater than that tested forming one joint face

and separating element constructions made of metals with a melting point higher than 1 000 °C forming the other joint face.

A fire resistance time obtained on a specific non-standard supporting construction applies only to that particular construction.

13.3 Seal position

Test results are valid only for the position (see Figure 3) in which the seal was tested, except that where the linear joint seal was fitted flush with the surface of the supporting construction and is exposed to the fire (see Figure 3, test specimen B), the result will also be applicable to test specimen C and E.

13.4 Mechanically induced movement

If the movement capability of a linear joint seal is less than $\pm 7,5$ %, the linear joint seal may be tested without mechanically induced movement and the result applies to the movement capability reported. Results obtained with mechanically induced movement prior to or during the tests are only valid for the movement capability tested or lower.

4.3 Field of Application – Linear Joint Seals to EN 1366-4: 2021

This classification is valid for the following end use applications (as defined in EN1366-4: 2021, referencing the following appropriate clauses of EN1366-4: 2021).

4.3.1 General Rules

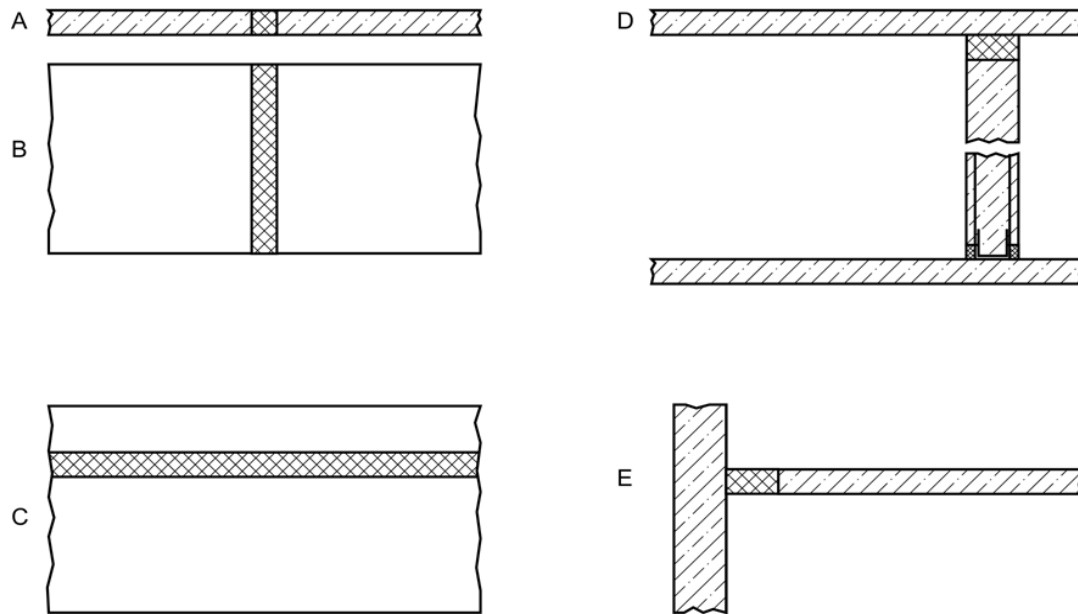
13.1 Orientation

The field of application regarding the orientation of the linear joint is given in Table 2. The possible orientation of linear joints (A to E) and of the specimens in the test (A to C) is illustrated in Figure 28



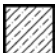
Table 2 — Field of direct application regarding orientation

Orientation tested	Application
A	A, C, E ^a
B	B
D	C, D
Key A linear joint in a horizontal test construction B vertical linear joint in a vertical test construction C horizontal linear joint in a vertical test construction D horizontal wall joint abutting a floor, ceiling or roof E horizontal floor joint abutting a wall	
^a Orientation E will only be covered by test orientation A if shear movement was chosen and one face of the joint was fixed and the other face was moved.	

Table 2 only applies when both the supporting construction and the location of the seal within the linear joint remain unchanged. See 13.3.



Key

-  joint seal
-  wall – front view
-  wall or floor – section

- A linear joint in a horizontal test construction
- B vertical linear joint in a vertical test construction
- C horizontal linear joint in a vertical test construction
- D horizontal wall joint abutting a floor, ceiling or roof (Top of Wall or Bottom of Wall)
- E horizontal floor joint abutting a wall

Figure 28 — Test and application orientation of joint seals

13.2 Supporting construction

13.2.1 Rigid constructions

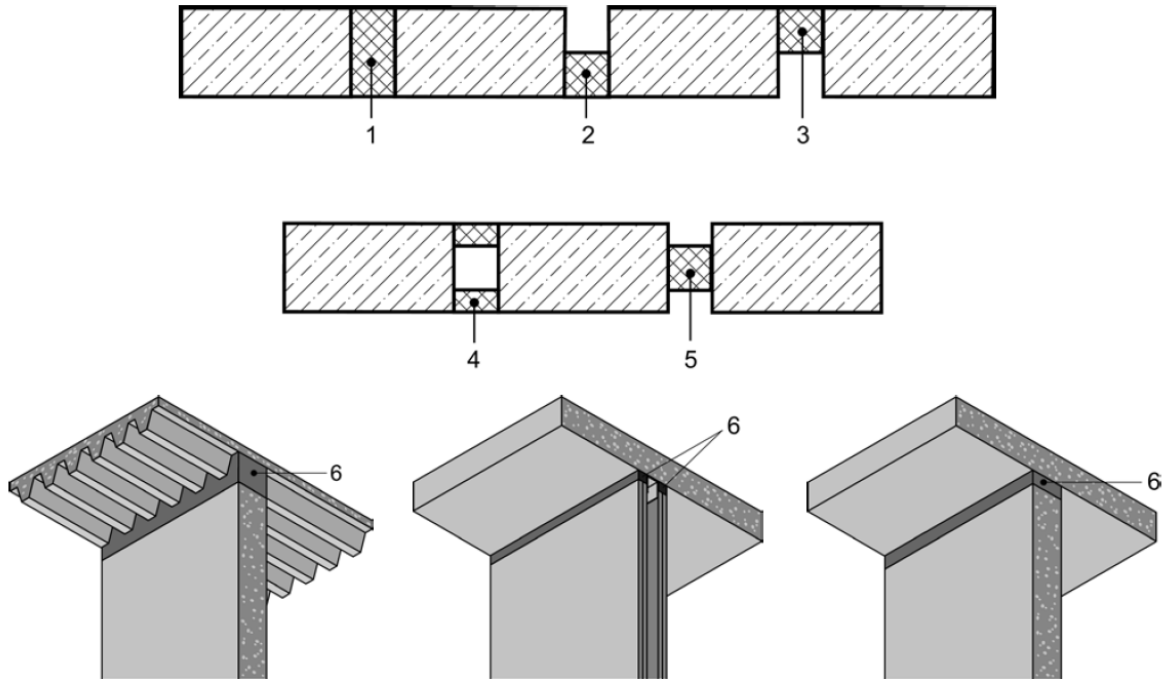
13.2.1.1 Results obtained with autoclaved aerated concrete standard supporting constructions apply to aerated concrete, concrete, blockwork and masonry separating elements of a thickness and density equal to or greater than tested.

13.2.1.2 Results obtained with normal concrete standard supporting constructions apply to concrete, blockwork and masonry separating elements of a thickness and density equal to or greater than tested.

13.3 Seal position

Test results are valid only for the position (see Figure 17) in which the seal was tested, except that where the linear joint seal was fitted flush with the surface of the supporting construction and is exposed to the fire (Figure 17, position 2), the result may also be applied to linear joint seals with positions 3 and 5.

Results of top of wall joints in flexible constructions are also valid for bottom of wall joints.



Key

- 1 joint seal fills joint
- 2 joint seal at bottom of joint
- 3 joint seal at top of joint
- 4 joint seal forms one or more air cavities
- 5 joint seal centred in joint
- 6 joint seal at top of wall (flexible wall adjacent to a floor)

Figure 17 — Examples of joint seal position in a joint

13.4 Mechanically induced movement

Results obtained with mechanically induced movement are only valid for the movement capability that has been used in the test for calculation of the induced movement in accordance with Annex B or lower for the direction tested (lateral, shear or combination). Elongation covers compression but not vice versa.

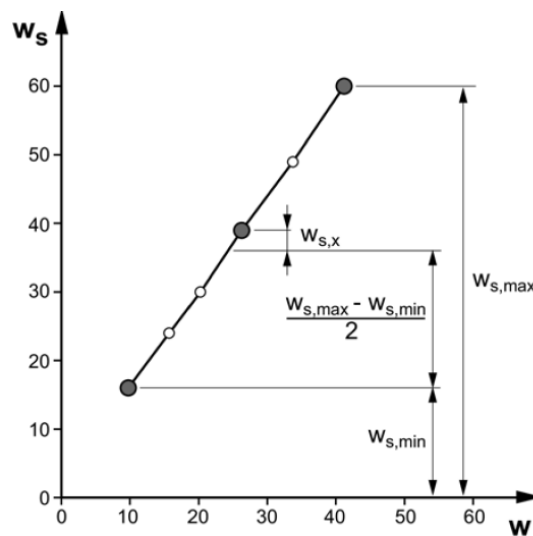
Linear joint seals with a movement capability less than 7,5 % may only be applied in non-movement joints in practice.

13.5 Dimensions

13.5.7 Linear joint seal made of pre-formed compressible strips

In the strip size range between 4 mm and 60 mm strip width test results on the minimum and maximum strip size cover other strip sizes in between provided that:

- the compression of the strip(s) is minimum as tested in relation to the nominal joint width;
- and
- the seal depth is minimum as tested;
- and
- three strip sizes were tested in accordance with the rules given in 7.2.7 (see Figure 30).



Key

- w nominal joint width
- w_s width of the strip
- $w_{s,x}$ difference between strip width $w_{s,calc}$ in accordance with 7.2.7 and the strip with a width next to $w_{s,calc}$
- sizes/number of layers included in the test
- size/number of layers covered without testing

Figure 30 — Field of direct application rules for pre-formed compressible strips

Test results for a particular strip size cover narrower nominal joint widths than used in the test for this strip size or than defined by the interpolation line (see Figure 30) for sizes in between.

The number of strip layers may be interpolated between the minimum and maximum number of layers tested. In the size range up to 60 mm strip width a test with the maximum number of layers in accordance with 7.2.7 covers equal or less layers for all strip sizes smaller than 60 mm width, provided the compression related to the nominal width and the seal depth are minimum as used in the test.

The seal depth may be increased but not decreased in practice.

5. Limitations

This classification report does not represent type approval or certification of the product.

6. Signatories

Report by:



D. Yates
Staff Engineer
Built Environment

Reviewed by:



C. Johnson
Senior Staff Engineer
Built Environment

For and on behalf of UL International (UK) Ltd.