

UL-EU CERTIFICATE

Certificate No.
UL-EU-01359-EN

Issue date
2025-10-21

Issue No.
1

Re-Issue date
-

Expiry date
2035-10-20



4705

This is to acknowledge that:
ROCKWOOL Limited

Address:
ROCKWOOL Limited, Wern Tarw, Pencoed, Bridgend, CF35 6NY

Has had the product:
FirePro Pipe Collar

evaluated and meets the requirements of the standard(s):
EAD 350454-00-1104, September 2017

Places of production:
ROCKWOOL Limited, Unit 2, Hams Hall, Canton Lane
B45 1GA, Birmingham

Authorised Signatory:

A handwritten signature in blue ink, appearing to read 'Chris Johnson'.

Chris Johnson

Issued by UL International (UK) Ltd

This is to certify that representative samples of the Certified Product listed above have been investigated by Underwriters Laboratories to the Standard(s) indicated on this Certificate, in accordance with the UL Global Services Agreement and the UL-EU Mark Service Terms and Conditions ("Agreement"). The Certificate Holder is entitled to use the UL-EU Mark for the Certified Product listed on the certificate and manufactured at the production site(s) listed, in accordance with the terms of the Agreement. Only those products bearing the UL-EU Mark for Europe should be considered as being covered by UL's UL-EU Mark Service. This Certificate shall remain valid through the Expiration date, unless a Standard identified on this Certificate is amended or withdrawn prior to that date or there is a non-compliance with the Agreement.



Appendix UL-EU CERTIFICATE UL-EU-01359-EN

This certificate relates to the use of FirePro Pipe Collar for fire stopping of service penetrations through floors and walls. The defined scope is provided in pages 4 to 25 of this certificate. This shows the thickness and acceptable dimensions, substrates and orientations required to provide fire resistance periods of up to 240 minutes for differing services and wall/floor constructions.

The product is certificated on the basis of:

- i) Inspection and surveillance of factory production control by UL
- ii) Fire resistance test data in accordance with EN 1366-3: 2021 and EN 1366-3: 2021 + A1:2024
- iii) Classification in accordance with EN 13501-2:2023
- iv) Durability and Serviceability as defined in EAD 350454-00-1104

The durability class of FirePro Pipe Collar is Type X: – intended for use in conditions exposed to weathering (includes all lower classes).

According to EN 1366-3: 2021+A1: 2024, Clause H.4.1.8.6.2, the following end uses are envisaged* based upon the tested pipe end configuration:

Pipe material	Tested pipe end	Envisaged use scenario
Metal	C/U or C/C	Closed pipe systems (e.g. systems under pressure)
	U/U, U/C or C/U	Ventilated pipe systems (e.g. sewage pipes) and for closed pipe systems
Plastic	U/U or C/U	Ventilated pipe systems and for closed pipe systems
	U/U	Ventilated pipe systems, for rainwater systems and for closed pipe systems

* In the case where a national prescription is in conflict with the content of the table above, the national prescriptions prevail.



Appendix UL-EU CERTIFICATE UL-EU-01359-EN

Product-Type: Sealant	Intended Use: Penetration Seal	
Assessment Method	Essential Characteristics	Product Performance
BWR 2 Safety in case of fire		
EN 13501-1	Reaction to fire	No performance determined
EN 13501-2:2023	Resistance to fire	See pages 4 to 25
BWR 3 Hygiene, health and environment		
Declaration of Manufacturer & EN 16516	Content, emission and/or release of dangerous substances	Use categories: IA1 Declaration of manufacturer
EN 1026:2016	Air Permeability (Material Property)	No performance determined
EN 1027:2016	Water Permeability (Material Property)	No performance determined
BWR 4 Safety in use		
EAD 350141-00-1104, Clause 2.2.6	Mechanical resistance and stability	No performance determined
EAD 350141-00-1104, Clause 2.2.7	Resistance to impact/movement	No performance determined
EAD 350141-00-1104, Clause 2.2.8	Adhesion	No performance determined
EAD 350141-00-1104, Clause 2.2.9	Durability	Type X
BWR 5 Protection against noise		
EN 10140-2:2021	Airborne sound insulation	No performance determined
BWR 6 Energy economy and heat retention		
EN 12664, EN 12667, EN 12939, EN ISO 8990, EN ISO 6946, EN ISO 10456	Thermal properties	No performance determined
EN ISO 12572, EN 12086, EN ISO 10456	Water vapour permeability	No performance determined



Appendix UL-EU CERTIFICATE UL-EU-01359-EN

Supporting substrate types

Substrate type	Minimum specification
Single skin flexible walls	The flexible wall construction must be classified in accordance with EN 13501-2 for the required fire resistance period and must have a minimum thickness of 75 mm. The walls may be insulated or uninsulated. The flexible wall construction comprises steel or timber studs lined on both faces with minimum 1 Layer of minimum 12,5 mm thick boards. For timber stud walls there must be a minimum distance of 100 mm from the seal to any stud. The cavity between stud and seal must be closed with an insulation of Class A1 (in accordance with EN 13501-1) for at least 100 mm distance.
Double skin flexible walls	The flexible wall construction must be classified in accordance with EN 13501-2 for the required fire resistance period and must have a minimum thickness of 100 mm. The walls may be insulated or uninsulated. The flexible wall construction comprise steel or timber studs lined on both faces with minimum 2 Layer of minimum 12,5 mm thick boards. For timber stud walls there must be a minimum distance of 100 mm from the seal to any stud. The cavity between stud and seal must be closed with an insulation of Class A1 (in accordance with EN 13501-1) for at least 100 mm distance.
Rigid walls	The rigid wall must have a minimum thickness of 100 mm and comprise aerated concrete, concrete or masonry, with a minimum density of 600 kg/m ³ .
Rigid floors	The rigid floor must have a minimum thickness of 150 mm and comprise aerated concrete, concrete or masonry, with a minimum density of 600 kg/m ³ .

Summary of assumptions

The ROCKWOOL FirePro® Pipe Collar shall be installed in line with the details given in the latest revision of Classification report UL 4791365504.1.

Spacings

Separation distances between pipes covered within this report are set at a minimum of 50 mm. Separation between other services is 100 mm.

Product Installation

Wall installation

For wall applications the penetrations shall be sealed symmetrically either side of the wall (unless otherwise stated). Additionally, a smoke seal consisting of FirePro® AIS shall be installed within the annular gap, either side of the wall.

Fixings

Single skin walls: ≥M5 x 52 mm Metallic cavity wall anchors



Appendix UL-EU CERTIFICATE UL-EU-01359-EN

Double skin walls: ≥M5 x 65 mm Metallic cavity wall anchors
 Drywall screws (metallic)

Masonry walls: Masonry screws

Floor installation

With floor constructions the collar shall be installed on the underside of the floor slab only. Additionally, a smoke seal consisting of FirePro AIS shall be installed between the pipe and floor slab to seal the annular space. Depending upon performance, this can be installed on either the upper or lower face of the floor. See tables for the associated performance.

Fixings

Concrete floor: 80 mm concrete screw
 Masonry screws (metallic)

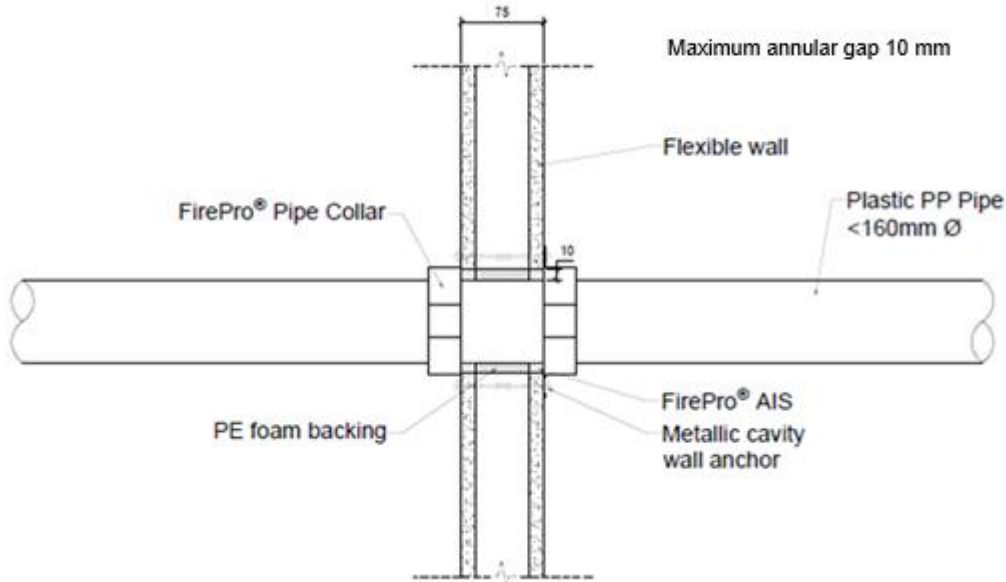
See performance tables for specific fire resistance performance of fixing types.

Appendix UL-EU CERTIFICATE UL-EU-01359-EN

Flexible walls with a minimum thickness of 75 mm – Insulated or Uninsulated

Plastic pipes protected with FirePro® Pipe Collar and fixed using metallic cavity anchors.

PP Pipes



Pipe Collar Size (mm)	Pipe size (mm)	Pipe wall thickness range (mm)	No. of intumescent layers	Seal description	Max. seal size	Classification
40	40	1.8 – 5.5	2	10 mm annulus x 12.5 mm deep on both sides of the wall, installed over a PE backing rod. Pipe collar flush with both faces of the supporting construction, fixed with M5 x 52mm wall anchor	60mm Ø	E 60 / EI 45 U/C
55	55	2.0 – 5.7	3		75mm Ø	E 60 / EI 45 U/C
63	63	2.1 – 5.8	3		83mm Ø	E 60 / EI 45 U/C
75	75	2.3 – 5.9	3		95mm Ø	E 60 / EI 45 U/C
82	82	2.4 – 6.0	4		102mm Ø	E 60 / EI 45 U/C
90	90	2.5 – 6.1	4		110mm Ø	E 60 / EI 45 U/C
110	110	2.7 – 6.3	4		130mm Ø	E 60 / EI 45 U/C
125	125	3.1 – 7.2	5		145mm Ø	E 60 / EI 45 U/C
140	140	3.5 – 8.1	6		160mm Ø	E 60 / EI 45 U/C
160	160	4.0 – 9.1	7		180mm Ø	E 60 / EI 45 U/C

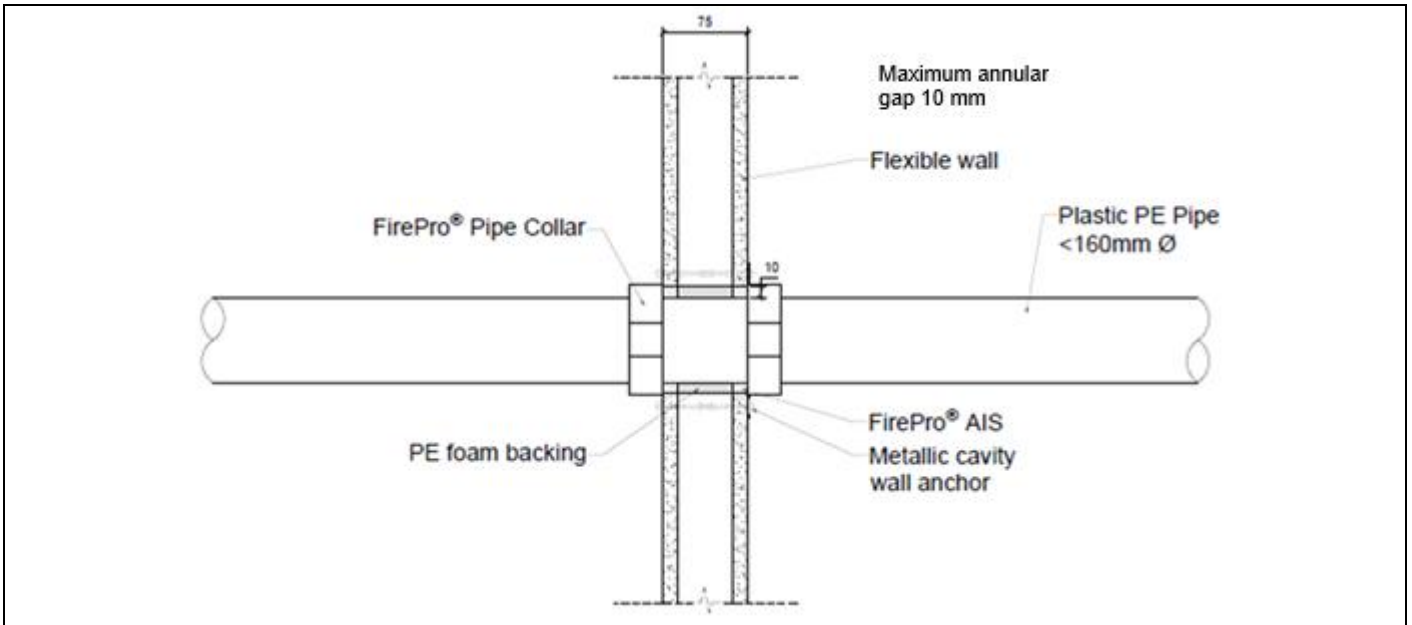


Solutions

Form-ULID-006104 V9.0

Appendix UL-EU CERTIFICATE UL-EU-01359-EN

PE Pipes

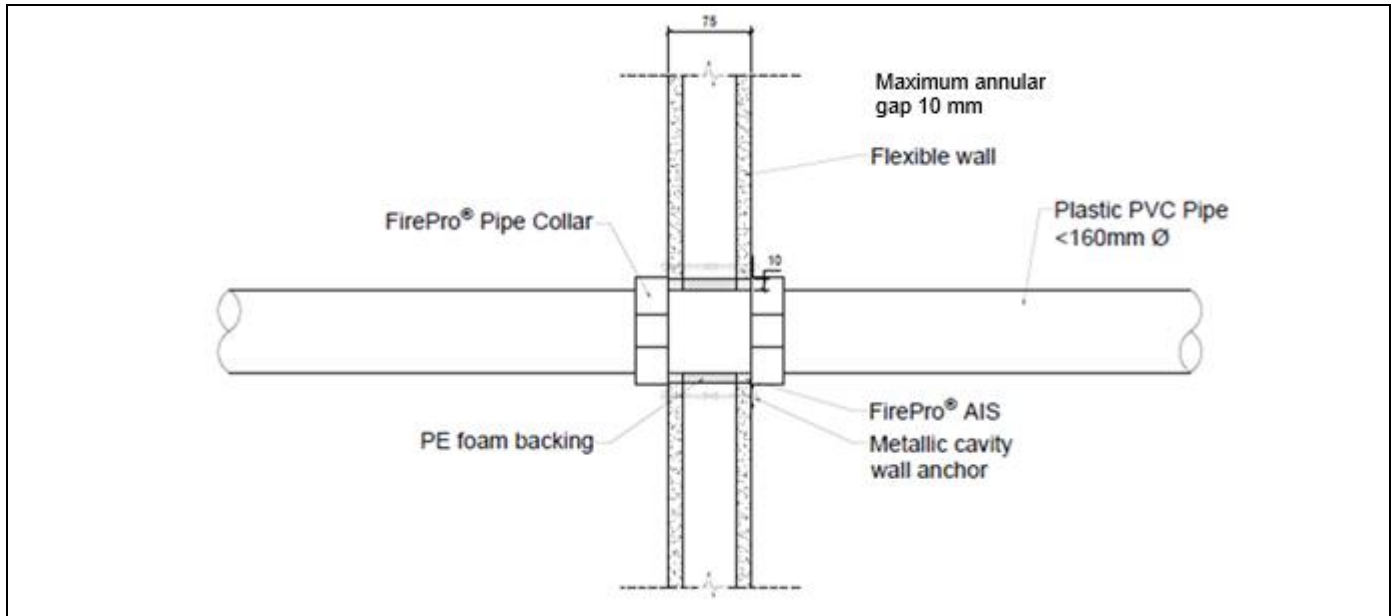


Pipe Collar Size (mm)	Pipe size (mm)	Pipe wall thickness range (mm)	No. of intumescent layers	Seal description	Max. seal size	Classification
40	40	2.4 – 3.7	2	10 mm annulus x 12.5 mm deep on both sides of the wall, installed over a PE backing rod. Pipe collar flush with both faces of the supporting construction, fixed with M5 x 52mm wall anchor	60mm Ø	E 60 / EI 45 U/C
55	55	2.5 – 5.0	3		75mm Ø	E 60 / EI 45 U/C
63	63	2.5 – 5.8	3		83mm Ø	E 60 / EI 45 U/C
75	75	2.5 – 6.9	3		95mm Ø	E 60 / EI 45 U/C
82	82	2.6 – 7.6	4		102mm Ø	E 60 / EI 45 U/C
90	90	2.6 – 8.3	4		110mm Ø	E 60 / EI 45 U/C
110	110	2.7 - 10	4		130mm Ø	E 60 / EI 45 U/C
125	125	3.4 – 9.8	5		145mm Ø	E 60 / EI 45 U/C
140	140	4.1 – 9.7	6		160mm Ø	E 60 / EI 45 U/C
160	160	4.9 – 9.5	7		180mm Ø	E 60 / EI 45 U/C



Appendix UL-EU CERTIFICATE UL-EU-01359-EN

PVC Pipes

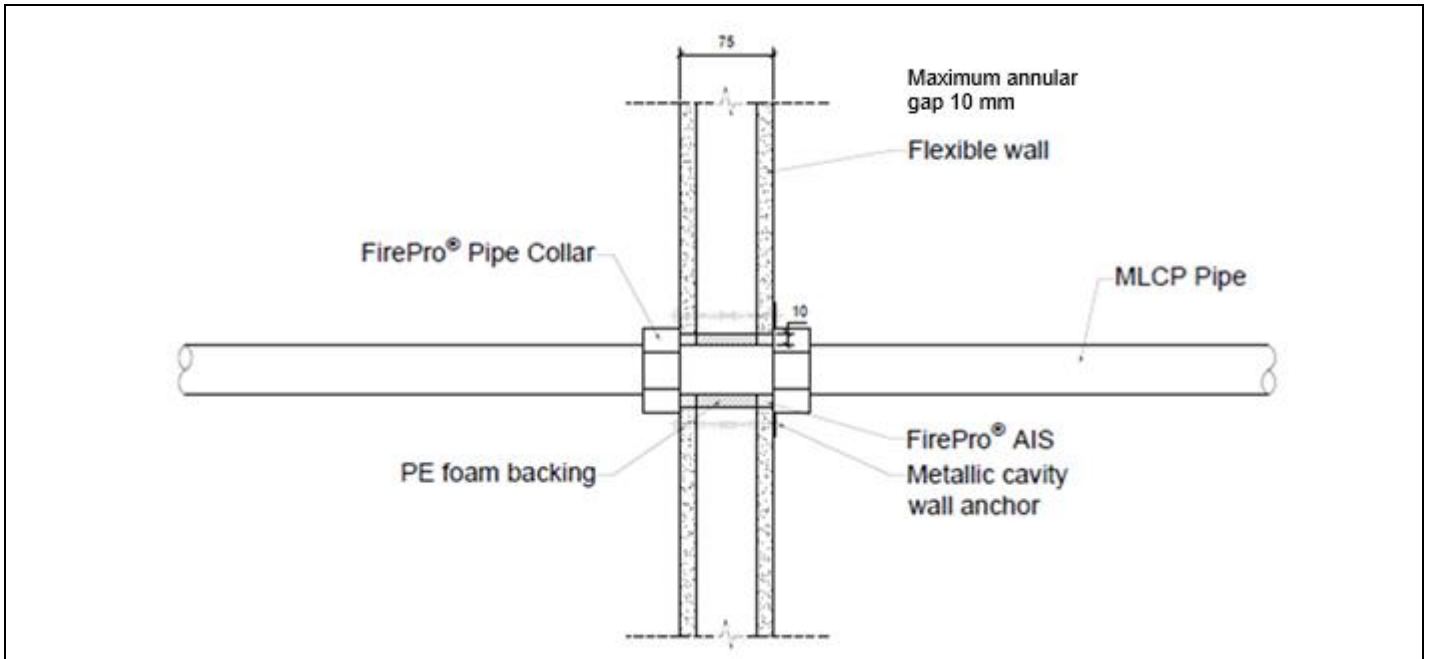


Pipe Collar Size (mm)	Pipe size (mm)	Pipe wall thickness range (mm)	No. of intumescent layers	Seal description	Max. seal size	Classification
40	40	1.9 – 3.0	2	10 mm annulus x 12.5 mm deep on both sides of the wall, installed over a PE backing rod. Pipe collar flush with both faces of the supporting construction, fixed with M5 x 52mm wall anchor	60mm \varnothing	E 60 / EI 45 U/C
55	55	2.4 – 3.7	3		75mm \varnothing	E 60 / EI 45 U/C
63	63	2.6 – 4.1	3		83mm \varnothing	E 60 / EI 45 U/C
75	75	3.0 – 4.8	3		95mm \varnothing	E 60 / EI 45 U/C
82	82	3.2 – 5.1	4		102mm \varnothing	E 60 / EI 45 U/C
90	90	3.5 – 5.6	4		110mm \varnothing	E 60 / EI 45 U/C
110	110	4.2 – 6.6	4		130mm \varnothing	E 60 / EI 45 U/C
125	125	4.8 – 7.6	5		145mm \varnothing	E 60 / EI 45 U/C
140	140	5.5 – 8.4	6		160mm \varnothing	E 60 / EI 45 U/C
160	160	6.2 – 9.5	7		180mm \varnothing	E 60 / EI 45 U/C



Appendix UL-EU CERTIFICATE UL-EU-01359-EN

MLCP Pipes



Pipe Collar Size (mm)	Pipe size (mm)	Pipe Type	Pipe wall thickness range (mm)	No. of intumescent layers	Seal description	Max. seal size	Classification
40	40	Uponor Uni Pipe Plus PP-RT / AL/ PP-RT	4	1	10 mm annulus x 12.5 mm deep on both sides of the wall, installed over a PE backing rod. Pipe collar flush with both faces of the supporting construction, fixed with M5 x 52mm wall anchor	60mm Ø	E 60 / EI 30 U/C
110	110		10	4		130mm Ø	E 60 / EI 30 U/C

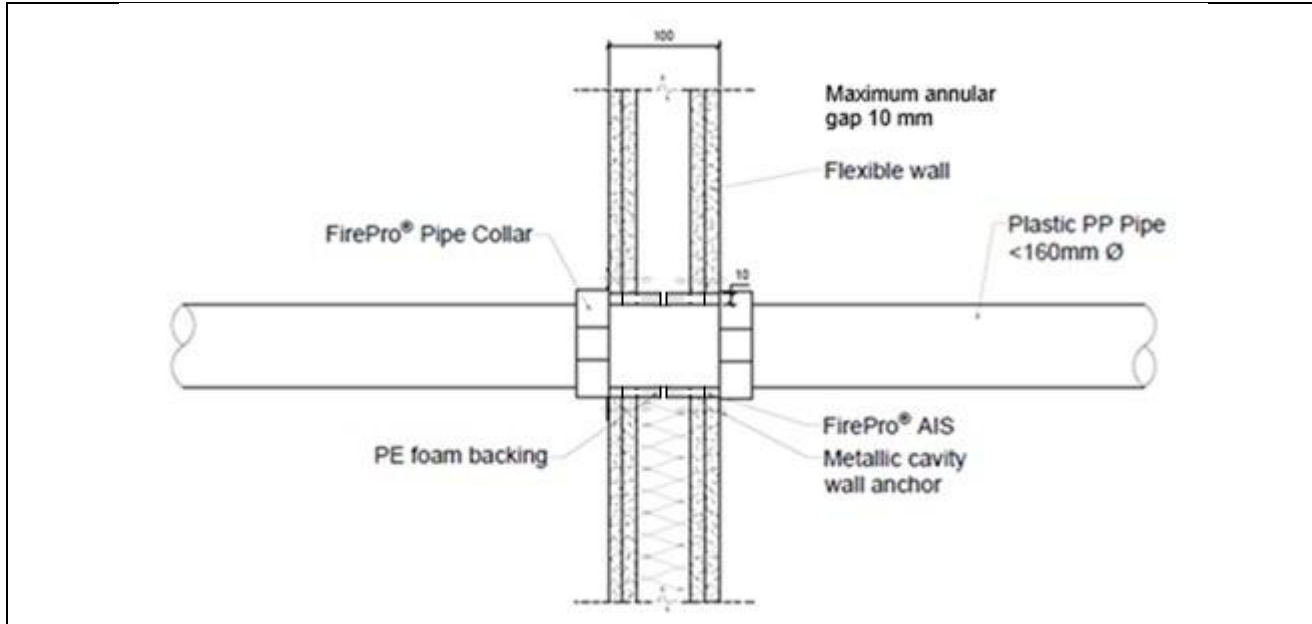


Appendix UL-EU CERTIFICATE UL-EU-01359-EN

Flexible walls with a minimum thickness of 100 mm – Insulated or uninsulated

Plastic pipes protected with FirePro® Pipe Collar and fixed using metallic cavity anchors.

PP Pipes

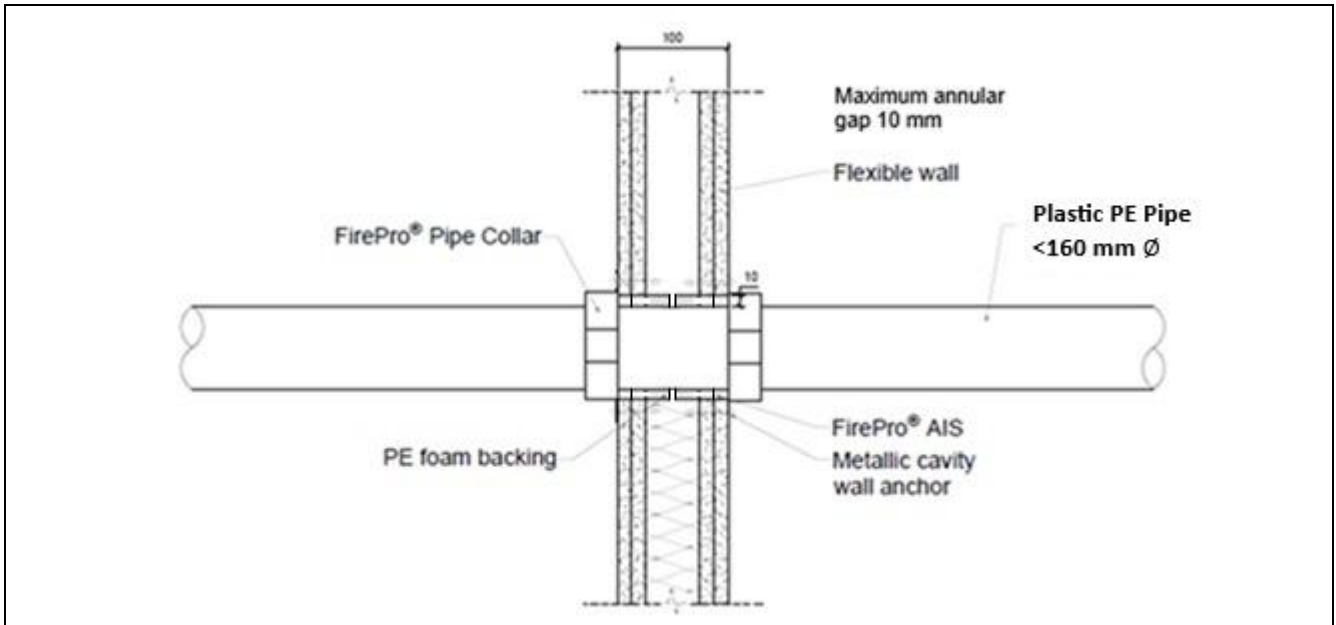


Pipe Collar Size (mm)	Pipe size (mm)	Pipe wall thickness range (mm)	No. of intumescent layers	Seal description	Max. seal size	Classification
40	40	1.8 – 5.5	2	10 mm annulus x 12.5 mm deep on both sides of the wall, installed over a 30 mm wide PE backing rod. Pipe collar flushed to both faces of the wall fixed in place with anchor screws	60mm Ø	EI 120 U/C
55	55	2.0 – 5.7	3		75mm Ø	EI 120 U/C
63	63	2.1 – 5.8	3		83mm Ø	EI 120 U/C
75	75	2.3 – 5.9	3		95mm Ø	EI 120 U/C
82	82	2.4 – 6.0	4		102mm Ø	EI 120 U/C
90	90	2.5 – 6.1	4		110mm Ø	EI 120 U/C
110	110	2.7 – 6.3	4		130mm Ø	EI 120 U/C
125	125	3.1 – 7.2	5		145mm Ø	EI 120 U/C
140	140	3.5 – 8.1	6		160mm Ø	EI 120 U/C
160	160	4.0 – 9.1	7		180mm Ø	EI 120 U/C



Appendix UL-EU CERTIFICATE UL-EU-01359-EN

PE Pipes

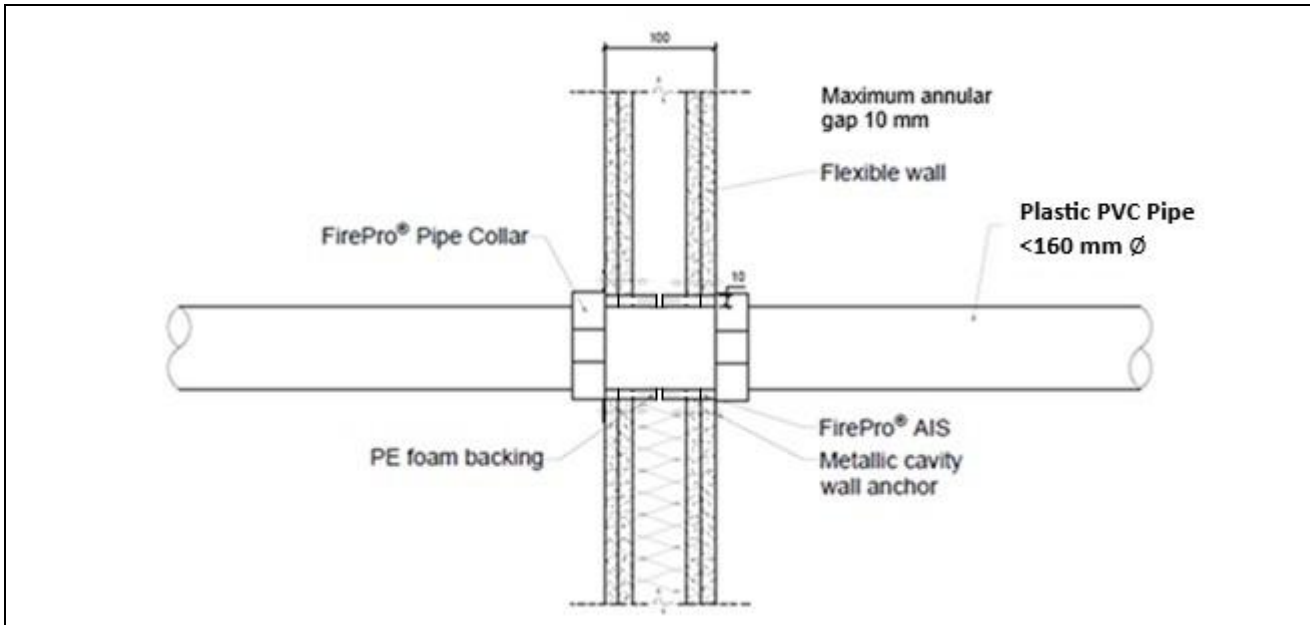


Pipe Collar Size (mm)	Pipe size (mm)	Pipe wall thickness range (mm)	No. of intumescent layers	Seal description	Max. seal size	Classification
40	40	2.4 – 3.7	2	10 mm annulus x 12.5 mm deep on both sides of the wall, installed over a 30 mm wide PE backing rod. Pipe collar flushed to both faces of the wall, fixed in place with anchor screws	60mm Ø	EI 120 U/C
55	55	2.5 – 5.0	3		75mm Ø	EI 120 U/C
63	63	2.5 – 5.8	3		83mm Ø	EI 120 U/C
75	75	2.5 – 6.9	3		95mm Ø	EI 120 U/C
82	82	2.6 – 7.6	4		102mm Ø	EI 120 U/C
90	90	2.6 – 8.3	4		110mm Ø	EI 120 U/C
110	110	2.7 - 10	4		130mm Ø	EI 120 U/C
125	125	3.4 – 9.8	5		145mm Ø	EI 120 U/C
140	140	4.1 – 9.7	6		160mm Ø	EI 120 U/C
160	160	4.9 – 9.5	7		180mm Ø	EI 120 U/C



Appendix UL-EU CERTIFICATE UL-EU-01359-EN

PVC Pipes

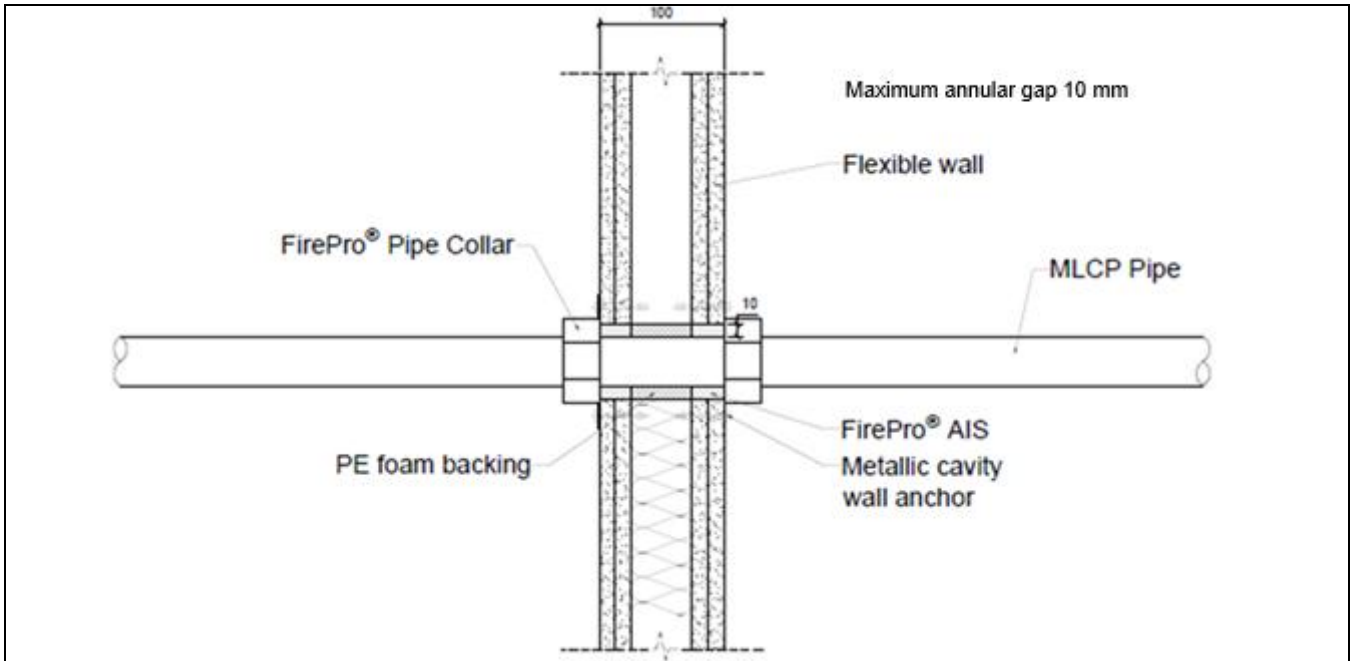


Pipe Collar Size (mm)	Pipe size (mm)	Pipe wall thickness range (mm)	No. of intumescent layers	Seal description	Max. seal size	Classification
40	40	1.9 – 3.0	2	10 mm annulus x 12.5 mm deep on both sides of the wall, installed over a 30 mm wide PE backing rod. Pipe collar flushed to both faces of the wall, fixed in place with anchor screws	60mm Ø	EI 120 U/C
55	55	2.4 – 3.7	3		75mm Ø	EI 120 U/C
63	63	2.6 – 4.1	3		83mm Ø	EI 120 U/C
75	75	3.0 – 4.8	3		95mm Ø	EI 120 U/C
82	82	3.2 – 5.1	4		102mm Ø	EI 120 U/C
90	90	3.5 – 5.6	4		110mm Ø	EI 120 U/C
110	110	4.2 – 6.6	4		130mm Ø	EI 120 U/C
125	125	4.8 – 7.6	5		145mm Ø	EI 120 U/C
140	140	5.5 – 8.4	6		160mm Ø	EI 120 U/C
160	160	6.2 – 9.5	7		180mm Ø	EI 120 U/C



Appendix UL-EU CERTIFICATE UL-EU-01359-EN

MLCP Pipes



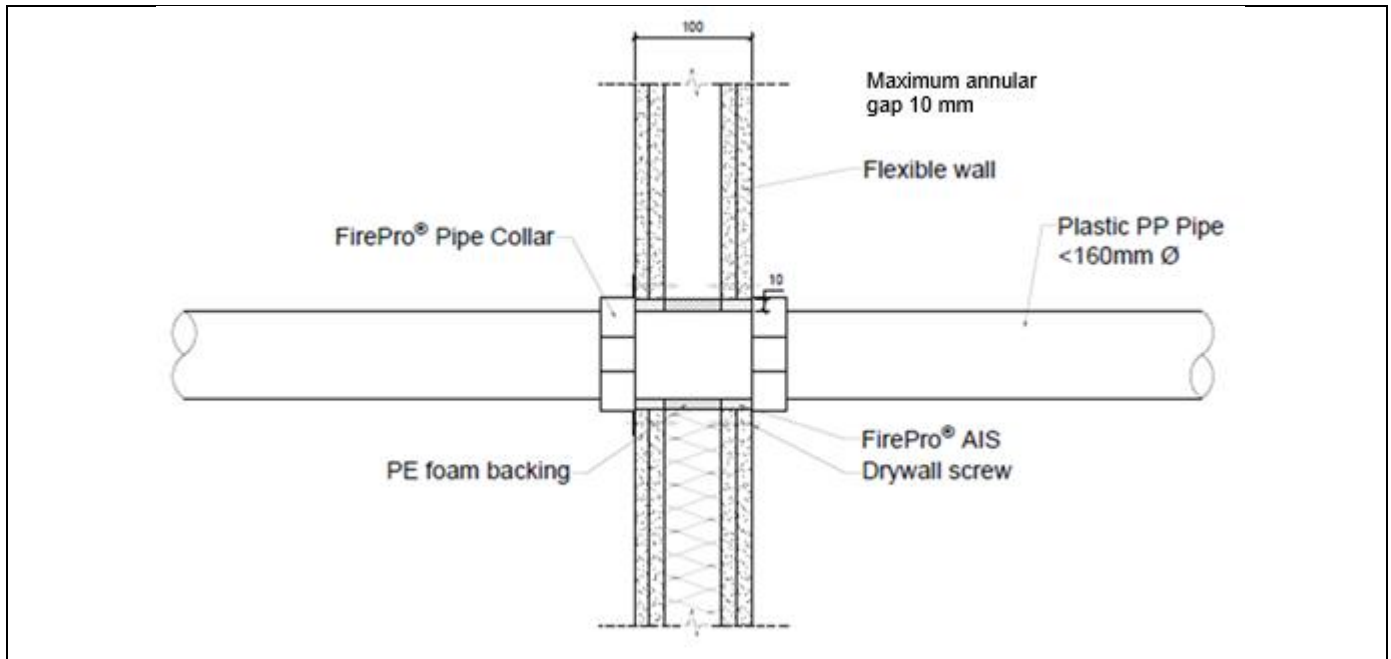
Pipe Collar Size (mm)	Pipe size (mm)	Pipe Type	Pipe wall thickness range (mm)	No. of intumescent layers	Seal description	Max. seal size	Classification
40	40	Uponor Uni Pipe PP-RT / AL/ PP-RT	4	2	10 mm annulus x 25 mm deep on both sides of the wall, installed over a 50 mm PE backing rod. Pipe collar flushed to both faces of the wall fixed in place with anchor screws	60mm Ø	E 120 / EI 30 U/C
110	110		10	4		130mm Ø	E 120 / EI 30 U/C



Appendix UL-EU CERTIFICATE UL-EU-01359-EN

Plastic pipes protected with FirePro® Pipe Collar and fixed using a drywall screw.

PP Pipes

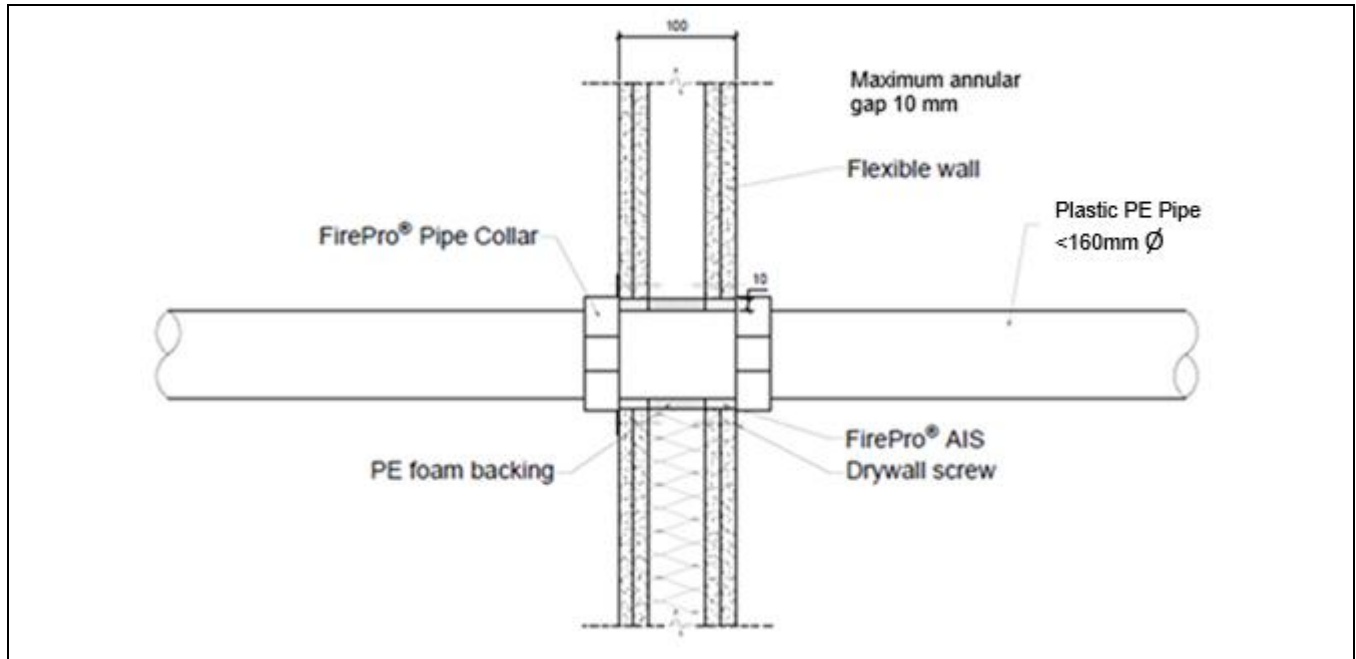


Pipe Collar Size (mm)	Pipe size (mm)	Pipe wall thickness range (mm)	No. of intumescent layers	Seal description	Max. seal size	Classification
40	40	1.8 – 5.5	2	10 mm deep FirePro® AIS, to both faces over 10 mm deep PE backing. Pipe collar fixed to the wall with 3 drywall screws, on collar to each face.	60mm Ø	EI 120 U/C
55	55	2.0 – 5.7	3		75mm Ø	E 120 / EI 90 U/C
63	63	2.1 – 5.8	3		83mm Ø	E 120 / EI 90 U/C
75	75	2.3 – 5.9	3		95mm Ø	E 120 / EI 90 U/C
82	82	2.3 – 6.0	4		102mm Ø	E 120 / EI 90 U/C
90	90	2.4 – 6.1	4		110mm Ø	E 120 / EI 90 U/C
110	110	2.7 – 6.3	4		130mm Ø	E 120 / EI 90 U/C
125	125	3.1 – 7.1	5		145mm Ø	E 120 / EI 90 U/C
140	140	3.5 – 8.0	6		160mm Ø	E 120 / EI 90 U/C
160	160	4.0 – 9.1	7		180mm Ø	E 120 / EI 90 U/C



Appendix UL-EU CERTIFICATE UL-EU-01359-EN

PE Pipes

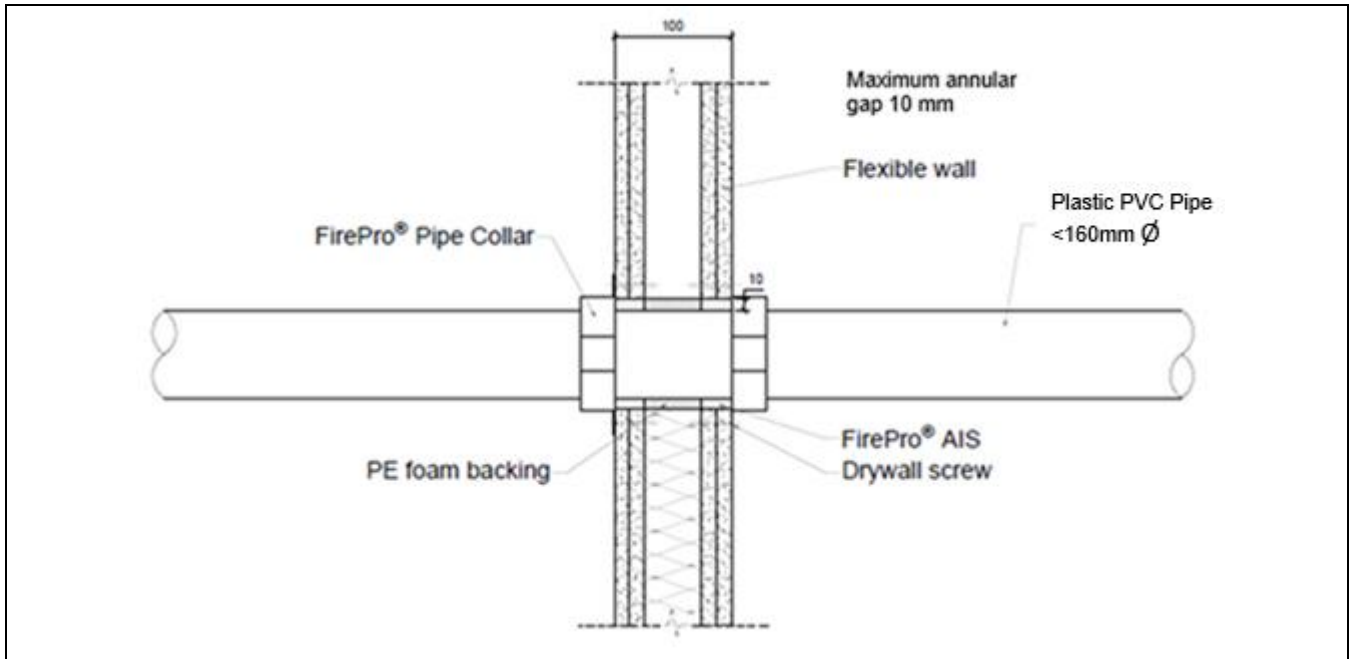


Pipe Collar Size (mm)	Pipe size (mm)	Pipe wall thickness range (mm)	No. of intumescent layers	Seal description	Max. seal size	Classification
40	40	2.4 – 3.7	2	10 mm deep FirePro® AIS, to both faces over 10 mm deep PE backing. Pipe collar fixed to the wall with 3 drywall screws, on collar to each face.	60mm \varnothing	EI 120 U/C
55	55	2.5 – 5.1	3		75mm \varnothing	E 120 / EI 90 U/C
63	63	2.5 – 5.8	3		83mm \varnothing	E 120 / EI 90 U/C
75	75	2.6 – 6.9	3		95mm \varnothing	E 120 / EI 90 U/C
82	82	2.6 – 7.5	4		102mm \varnothing	E 120 / EI 90 U/C
90	90	2.6 – 8.2	4		110mm \varnothing	E 120 / EI 90 U/C
110	110	2.7 – 10	4		130mm \varnothing	E 120 / EI 90 U/C
125	125	3.4 – 9.9	5		145mm \varnothing	E 120 / EI 90 U/C
140	140	4.0 – 9.7	6		160mm \varnothing	E 120 / EI 90 U/C
160	160	4.9 – 9.5	7		180mm \varnothing	E 120 / EI 90 U/C



Appendix UL-EU CERTIFICATE UL-EU-01359-EN

PVC Pipes



Pipe Collar Size (mm)	Pipe size (mm)	Pipe wall thickness range (mm)	No. of intumescent layers	Seal description	Max. seal size	Classification
40	40	1.9 – 3.0	2	10 mm deep FirePro® AIS, to both faces over 10 mm deep PE backing. Pipe collar fixed to the wall with 3 drywall screws, on collar to each face.	60mm Ø	EI 120
55	55	2.4 – 3.8	3		75mm Ø	EI 120
63	63	2.7 – 4.2	3		83mm Ø	EI 120
75	75	3.1 – 4.8	3		95mm Ø	EI 120
82	82	3.3 – 5.2	4		102mm Ø	EI 120
90	90	3.5 – 5.6	4		110mm Ø	EI 120
110	110	4.2 – 6.6	4		130mm Ø	EI 120
125	125	4.8 – 7.5	5		145mm Ø	EI 120
140	140	5.4 – 8.3	6		160mm Ø	EI 120
160	160	6.2 – 9.5	7		180mm Ø	EI 120

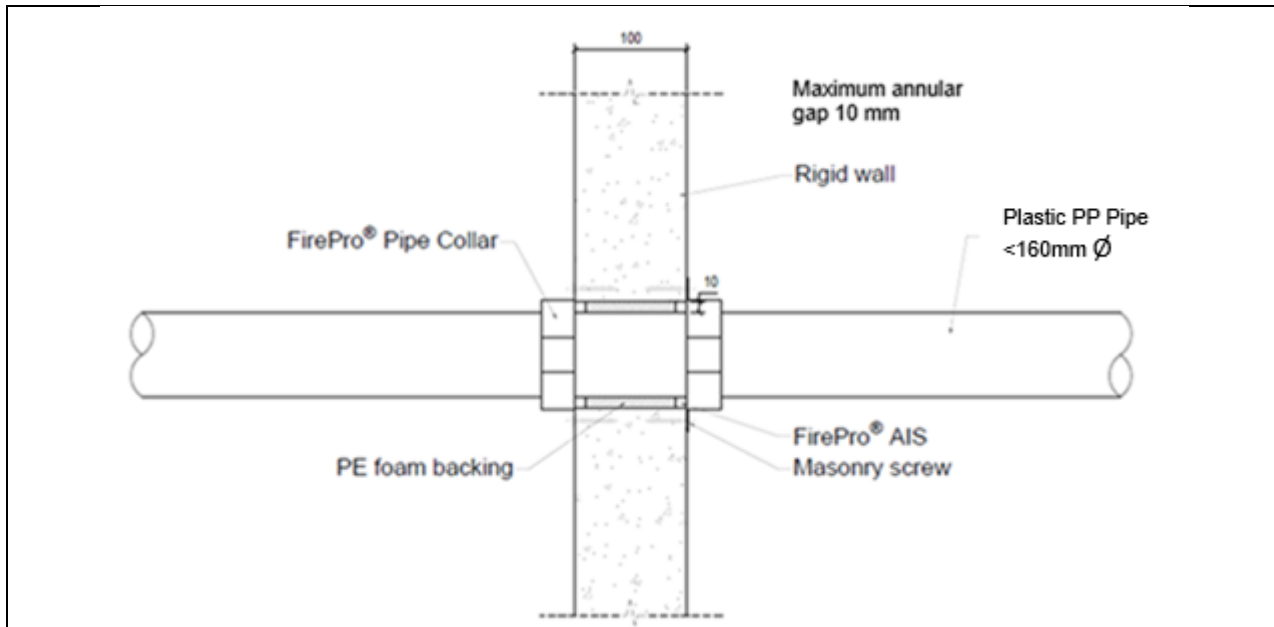


Appendix UL-EU CERTIFICATE UL-EU-01359-EN

Rigid walls with a minimum thickness of 100 mm

Plastic pipes protected with FirePro® Pipe Collar and fixed using masonry screws.

PP Pipes



Pipe Collar Size (mm)	Pipe size (mm)	Pipe wall thickness range (mm)	No. of intumescent layers	Seal description	Max. seal size	Classification
40	40	1.8 – 5.5	2	10 mm deep FirePro® AIS, to both faces over 10 mm deep PE backing. Pipe collar fixed to the wall with 3 masonry screws, on collar to each face	60mm Ø	EI 120 U/C
55	55	2.0 – 5.6	3		75mm Ø	E 120 / EI 90 U/C
63	63	2.1 – 5.8	3		83mm Ø	E 120 / EI 90 U/C
75	75	2.2 – 5.9	3		95mm Ø	E 120 / EI 90 U/C
82	82	2.4 – 6.0	4		102mm Ø	E 120 / EI 90 U/C
90	90	2.6 – 6.2	4		110mm Ø	E 120 / EI 90 U/C
110	110	2.7 – 6.3	4		130mm Ø	E 120 / EI 90 U/C
125	125	3.1 – 7.2	5		145mm Ø	E 120 / EI 90 U/C
140	140	3.5 – 8.1	6		160mm Ø	E 120 / EI 90 U/C
160	160	4.0 – 9.1	7		180mm Ø	EI 120 U/C

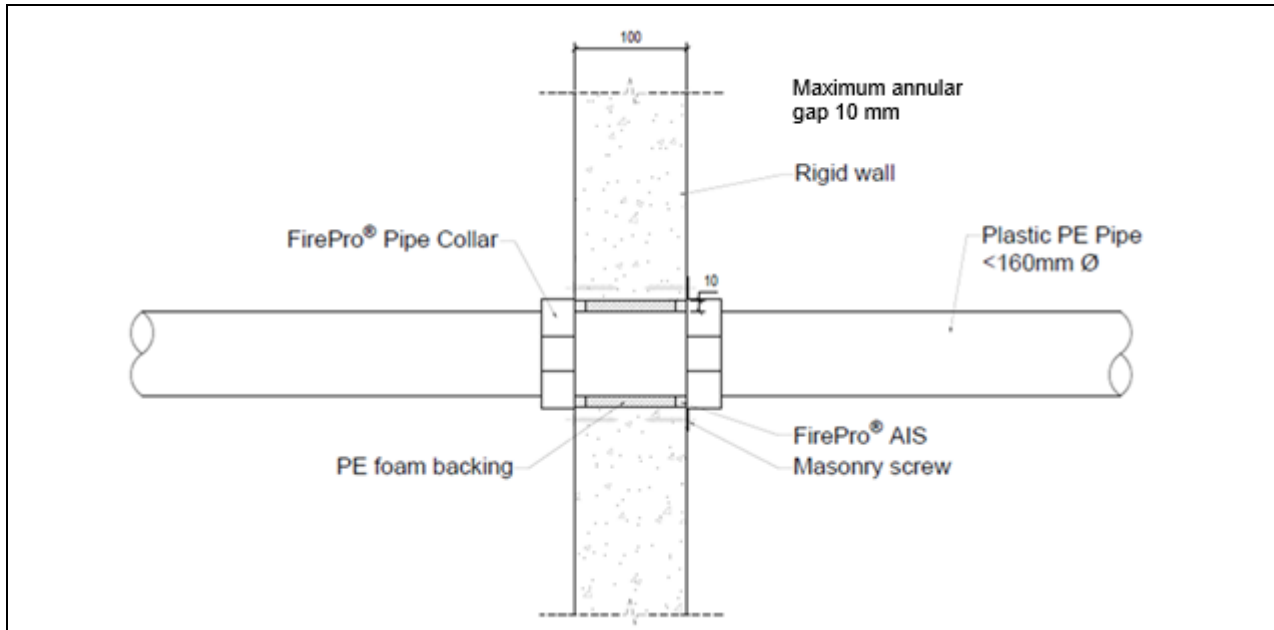


Solutions

Form-ULID-006104 V9.0

Appendix UL-EU CERTIFICATE UL-EU-01359-EN

PE Pipes

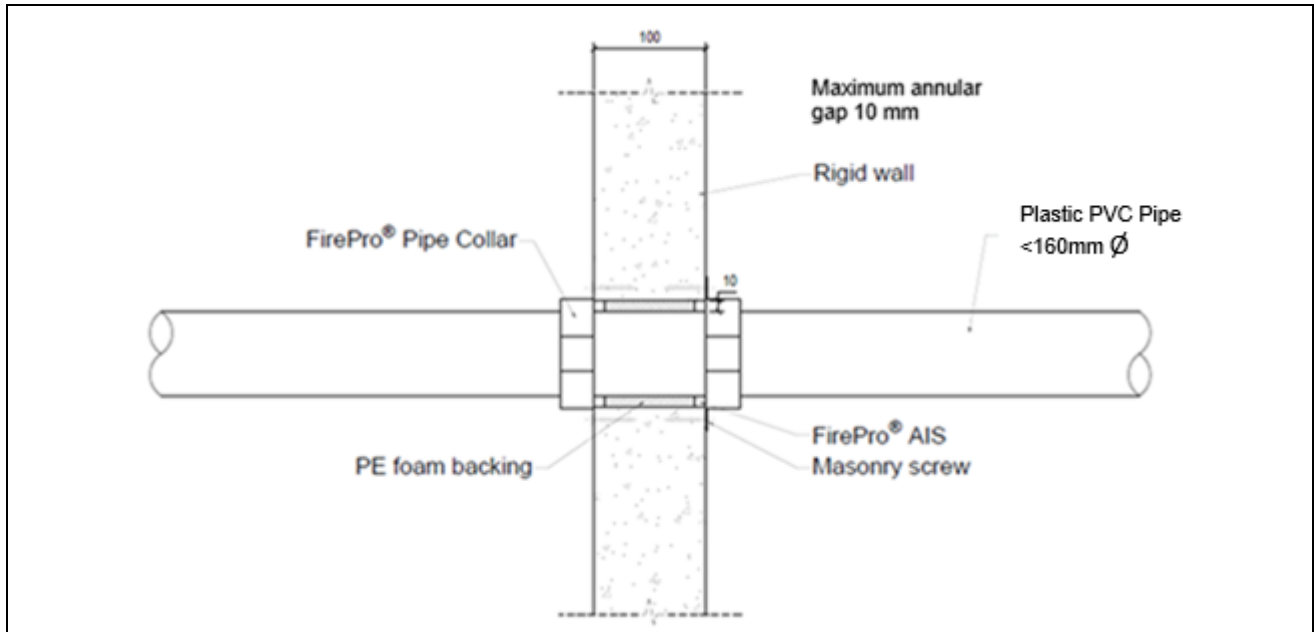


Pipe Collar Size (mm)	Pipe size (mm)	Pipe wall thickness range (mm)	No. of intumescent layers	Seal description	Max. seal size	Classification
40	40	2.4 – 3.7	2	10 mm deep FirePro® AIS, to both faces over 10 mm deep PE backing. Pipe collar fixed to the wall with 3 masonry screws, on collar to each face	60mm Ø	EI 120 U/C
55	55	2.5 – 5.0	3		75mm Ø	E 120 / EI 60 U/C
63	63	2.5 – 5.8	3		83mm Ø	E 120 / EI 60 U/C
75	75	2.5 – 6.9	3		95mm Ø	E 120 / EI 60 U/C
82	82	2.6 – 7.6	4		102mm Ø	E 120 / EI 60 U/C
90	90	2.6 – 8.3	4		110mm Ø	E 120 / EI 60 U/C
110	110	2.7 - 10	4		130mm Ø	E 120 / EI 60 U/C
125	125	3.4 – 9.8	5		145mm Ø	E 120 / EI 60 U/C
140	140	4.1 – 9.7	6		160mm Ø	E 120 / EI 60 U/C
160	160	4.9 – 9.5	7		180mm Ø	EI 120 U/C



Appendix UL-EU CERTIFICATE UL-EU-01359-EN

PVC Pipes



Pipe Collar Size (mm)	Pipe size (mm)	Pipe wall thickness range (mm)	No. of intumescent layers	Seal description	Max. seal size	Classification
40	40	1.9 – 3.0	2	10 mm deep FirePro® AIS, to both faces over 10 mm deep PE backing. Pipe collar fixed to the wall with 3 masonry screws, on collar to each face	60mm Ø	EI 120 U/C
55	55	2.4 – 3.7	3		75mm Ø	EI 120 U/C
63	63	2.6 – 4.1	3		83mm Ø	EI 120 U/C
75	75	3.0 – 4.8	3		95mm Ø	EI 120 U/C
82	82	3.2 – 5.1	4		102mm Ø	EI 120 U/C
90	90	3.5 – 5.6	4		110mm Ø	EI 120 U/C
110	110	4.2 – 6.6	4		130mm Ø	EI 120 U/C
125	125	4.8 – 7.6	5		145mm Ø	EI 120 U/C
140	140	5.5 – 8.4	6		160mm Ø	EI 120 U/C
160	160	6.2 – 9.5	7		180mm Ø	EI 120 U/C

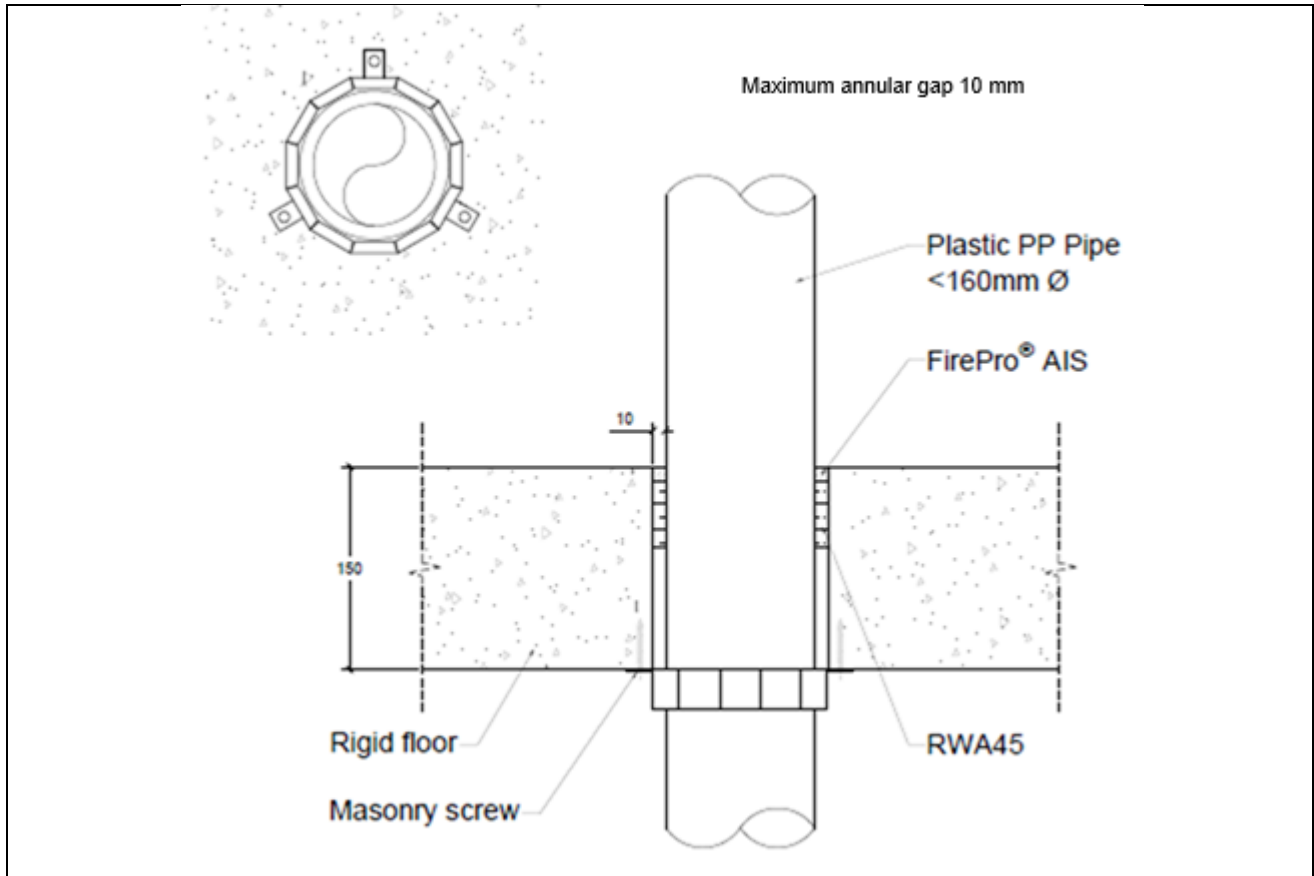


Appendix UL-EU CERTIFICATE UL-EU-01359-EN

Rigid Floors with a minimum thickness of 150 mm.

Plastic pipes protected with FirePro® Pipe Collar and fixed using 80 mm long masonry screw.
Aperture sealed on the top of the floor slab.

PP Pipes



Pipe Collar Size (mm)	Pipe size (mm)	Pipe wall thickness range (mm)	Nr. of intumescent layers	Seal description	Max. seal size	Classification
40	40	1.8 – 5.5	2	10 mm deep FirePro® AIS, on the upper face over 50 mm deep mineral wool backing. Pipe collar on the exposed face only, fixed to the underside of the floor with 3 no. steel masonry screws	60mm Ø	EI 240 U/C
55	55	2.1 – 6.0	3		75mm Ø	EI 240 U/C
63	63	2.2 – 6.2	3		83mm Ø	EI 240 U/C
82	82	2.6 – 6.8	4		102mm Ø	EI 240 U/C
160	160	4.0 – 9.1	7		180mm Ø	EI 240 U/C

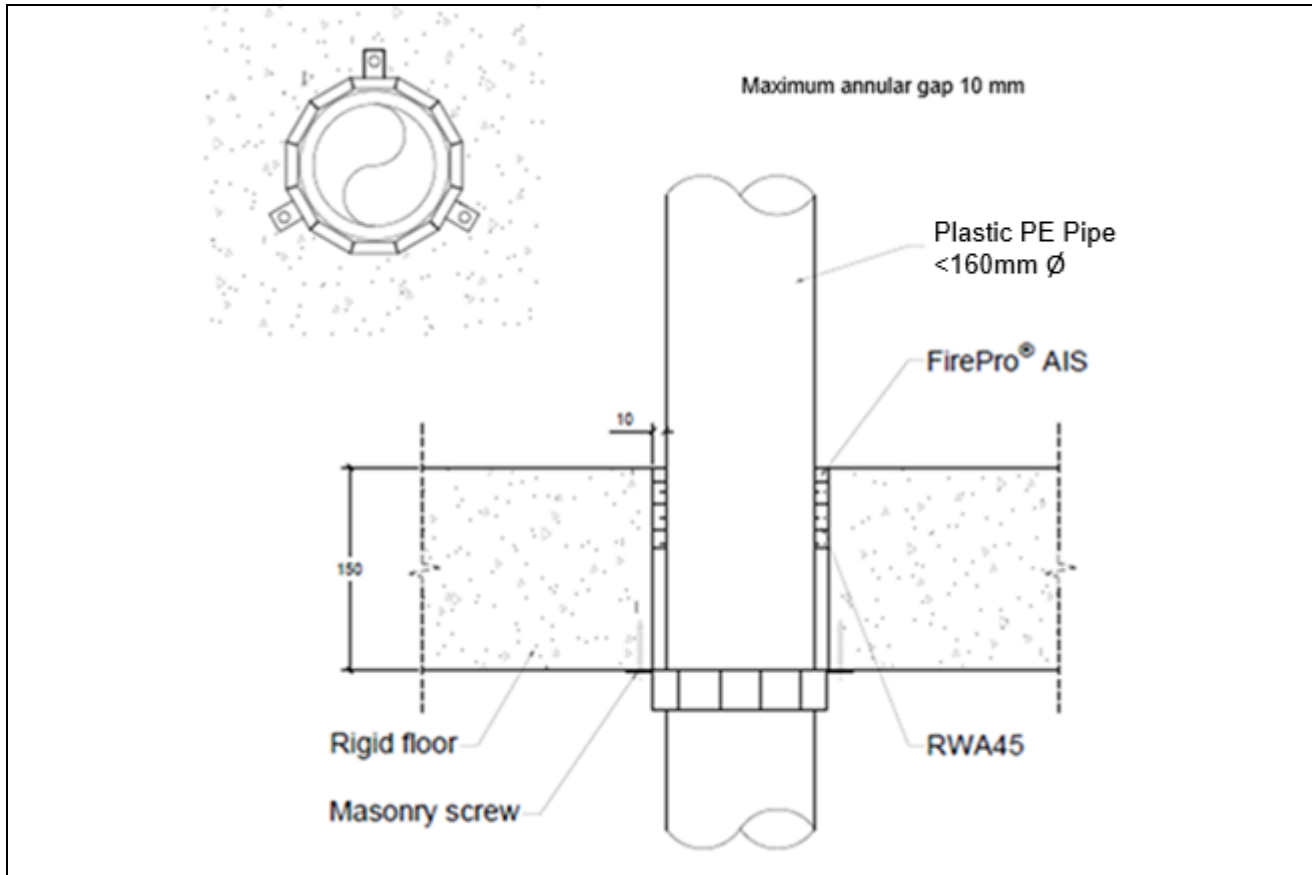


Solutions

Form-ULID-006104 V9.0

Appendix UL-EU CERTIFICATE UL-EU-01359-EN

PE Pipes

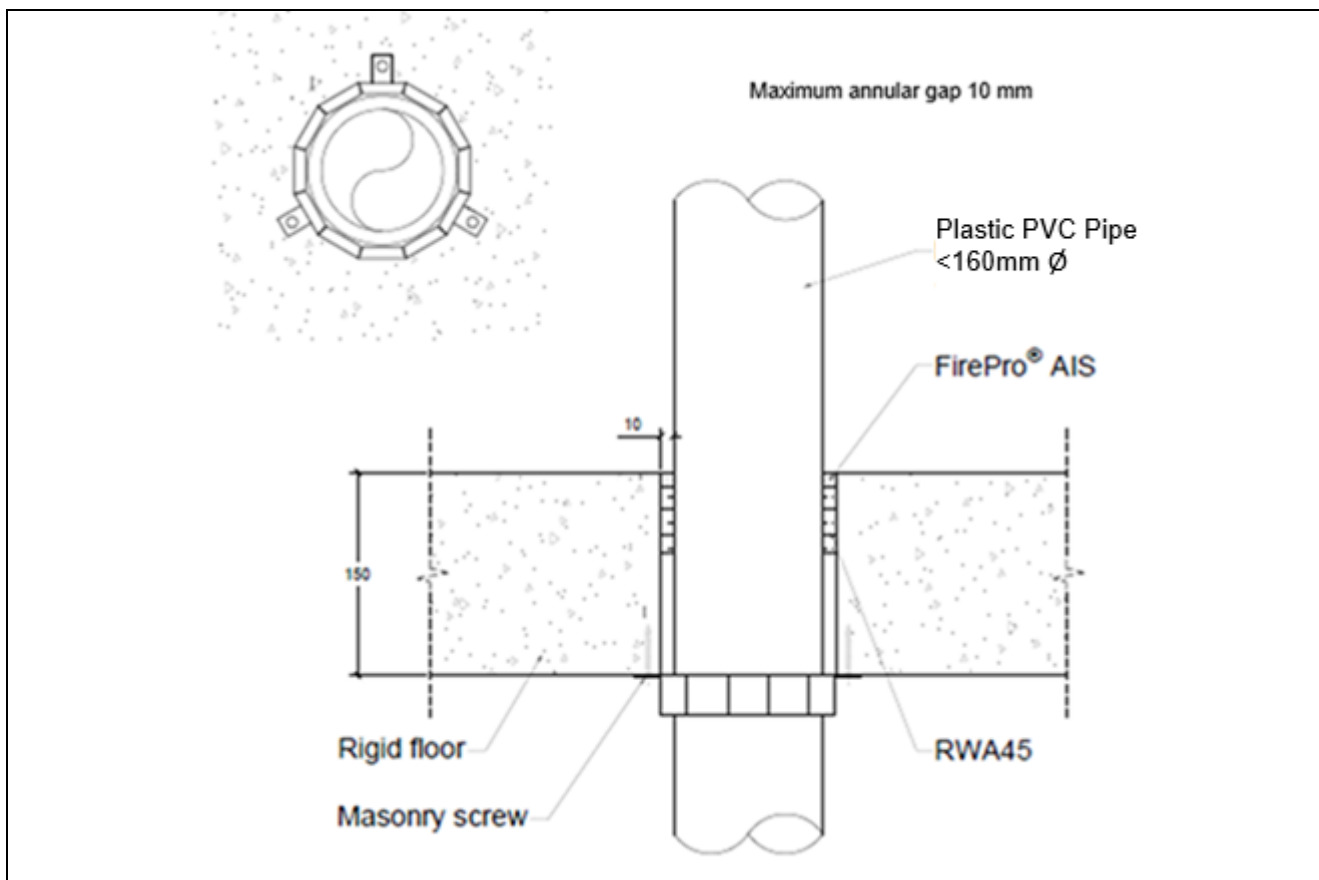


Pipe Collar Size (mm)	Pipe size (mm)	Pipe wall thickness range (mm)	Nr. of intumescent layers	Seal description	Max. seal size	Classification
40	40	2.4 – 3.7	2	10 mm deep FirePro® AIS, on the upper face over 50 mm deep mineral wool backing. Pipe collar on the exposed face only, fixed to the underside of the floor with 3 no. steel masonry screws	60mm \varnothing	EI 240 U/C
55	55	2.7 – 4.5	3		75mm \varnothing	EI 240 U/C
63	63	2.9 – 4.9	3		83mm \varnothing	EI 240 U/C
82	82	3.3 – 5.8	4		102mm \varnothing	EI 240 U/C
160	160	4.9 – 9.5	7		180mm \varnothing	EI 240 U/C



Appendix UL-EU CERTIFICATE UL-EU-01359-EN

PVC Pipes



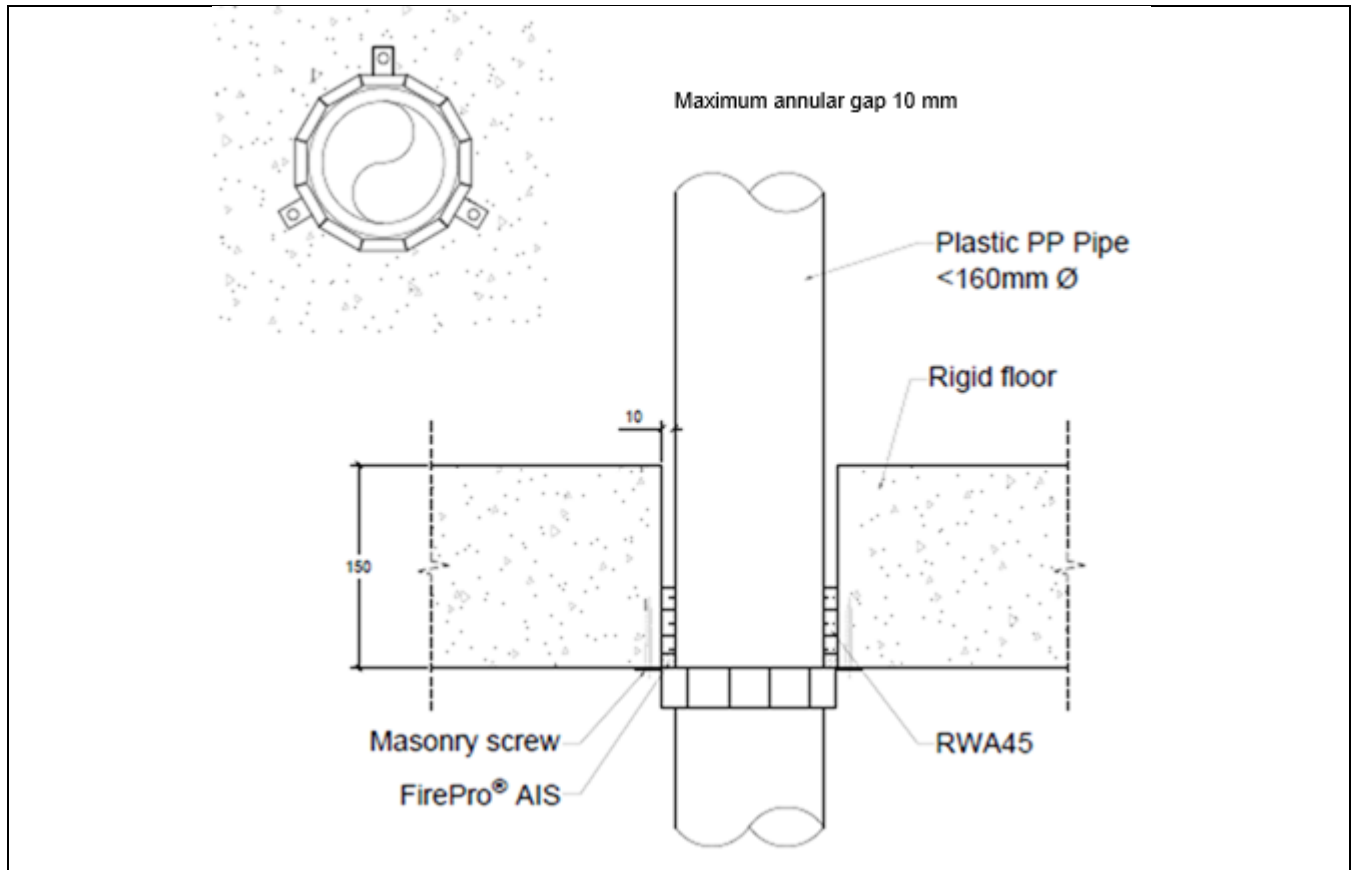
Pipe Collar Size (mm)	Pipe size (mm)	Pipe wall thickness range (mm)	Nr. of intumescent layers	Seal description	Max. seal size	Classification
40	40	1.9 – 3.0	2	10 mm deep FirePro® AIS, on the upper face over 50 mm deep mineral wool backing. Pipe collar on the exposed face only, fixed to the underside of the floor with 3 no. steel masonry screws	60mm Ø	EI 240 U/C
55	55	2.5 – 3.8	3		75mm Ø	EI 240 U/C
63	63	2.8 – 4.3	3		83mm Ø	EI 240 U/C
82	82	3.5 – 5.4	4		102mm Ø	EI 240 U/C
160	160	6.2 – 9.5	7		180mm Ø	EI 240 U/C



Appendix UL-EU CERTIFICATE UL-EU-01359-EN

Plastic pipes protected with FirePro® Pipe Collar and fixed using 80 mm long masonry screws. Aperture sealed on the underside of the floor slab.

PP Pipes

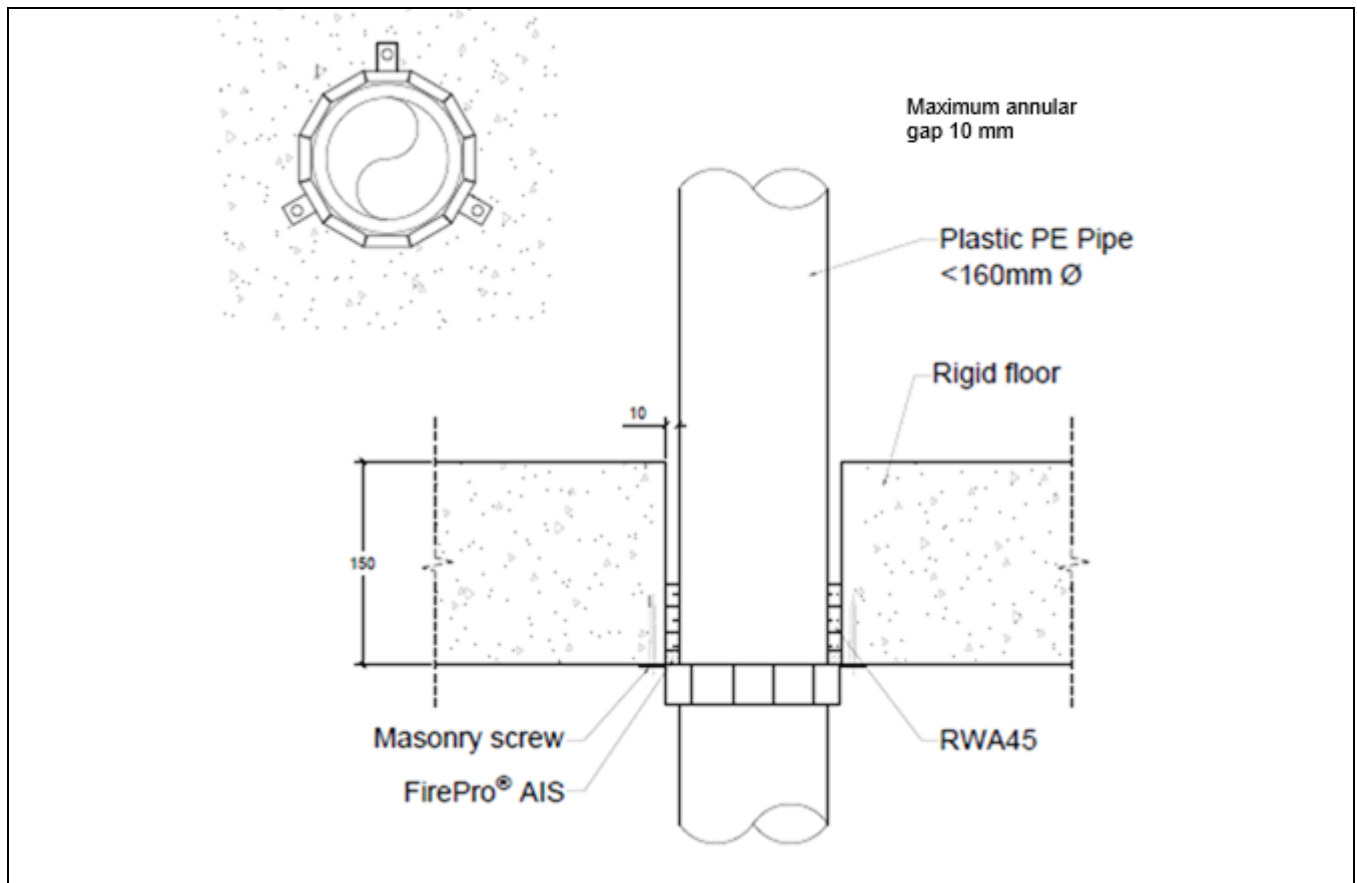


Pipe Collar Size (mm)	Pipe size (mm)	Pipe wall thickness range (mm)	Nr. of intumescent layers	Seal description	Max. seal size	Classification
40	40	1.8 – 5.5	2	10 mm annular gap sealed with FirePro® AIS installed over 10 mm deep mineral wool backer to the exposed face. Pipe collar fixed flush with the exposed face of the construction, fixed into place with 80 mm stainless steel aerated concrete screw	60mm Ø	EI 90 U/C
55	55	2 – 6.4	3		75mm Ø	EI 90 U/C
63	63	2.1 – 7.0	3		83mm Ø	EI 90 U/C
75	75	2.3 – 7.7	3		95mm Ø	EI 90 U/C
82	82	2.4 – 8.2	4		102mm Ø	EI 90 U/C
90	90	2.5 – 8.7	4		110mm Ø	EI 90 U/C
110	110	2.7 – 10	4		130mm Ø	EI 90 U/C
125	125	3.1 – 9.7	5		145mm Ø	EI 90 U/C
140	140	3.5 – 9.5	6		160mm Ø	EI 90 U/C
160	160	4.0 – 9.1	7		180mm Ø	EI 90 U/C



Appendix UL-EU CERTIFICATE UL-EU-01359-EN

PE Pipes

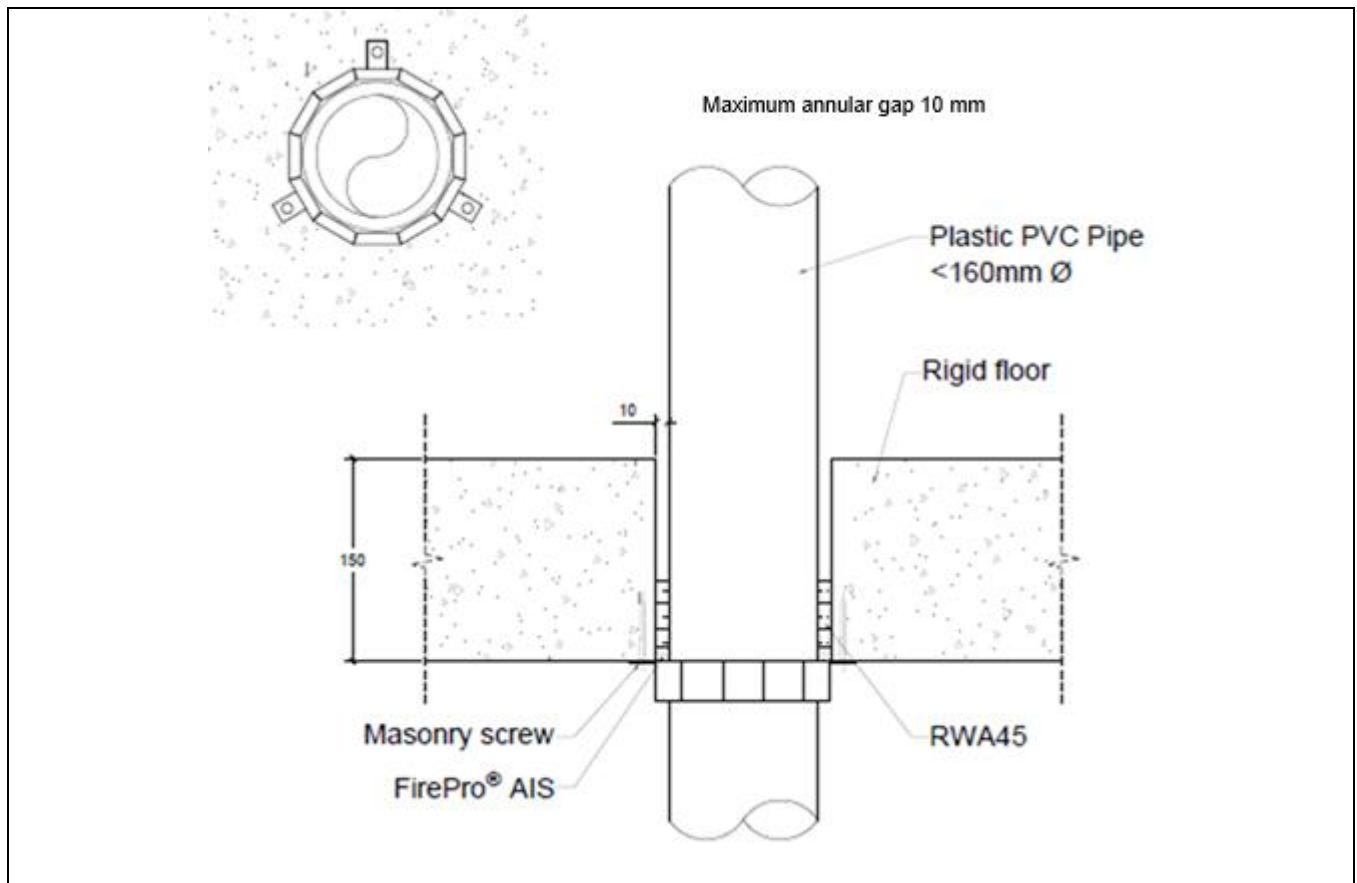


Pipe Collar Size (mm)	Pipe size (mm)	Pipe wall thickness range (mm)	Nr. of intumescent layers	Seal description	Max. seal size	Classification
40	40	2.4 – 3.7	2	10 mm annular gap sealed with FirePro® AIS installed over 10 mm deep mineral wool backer to the exposed face. Pipe collar fixed flush with the exposed face of the construction, fixed into place with 80 mm stainless steel aerated concrete screw	60mm Ø	EI 120 U/C
55	55	2.5 – 5.0	3		75mm Ø	EI 120 U/C
63	63	2.5 – 5.8	3		83mm Ø	EI 120 U/C
75	75	2.5 – 6.9	3		95mm Ø	EI 120 U/C
82	82	2.6 – 7.6	4		102mm Ø	EI 120 U/C
90	90	2.6 – 8.3	4		110mm Ø	EI 120 U/C
110	110	2.7 - 10	4		130mm Ø	EI 120 U/C
125	125	3.4 – 9.8	5		145mm Ø	EI 120 U/C
140	140	4.1 – 9.7	6		160mm Ø	EI 120 U/C
160	160	4.9 – 9.5	7		180mm Ø	EI 120 U/C



Appendix UL-EU CERTIFICATE UL-EU-01359-EN

PVC Pipes



Pipe Collar Size (mm)	Pipe size (mm)	Pipe wall thickness range (mm)	Nr. of intumescent layers	Seal description	Max. seal size	Classification
40	40	1.9 – 3.0	2	10 mm annular gap sealed with FirePro® AIS installed over 10 mm deep mineral wool backer backer to the exposed face. Pipe collar fixed flush with the exposed face of the construction, fixed into place with 80 mm stainless steel aerated concrete screw	60mm Ø	EI 120 U/C
55	55	2 – 3.7	3		75mm Ø	EI 90 U/C
63	63	2.1 – 4.1	3		83mm Ø	EI 90 U/C
75	75	2.3 – 4.8	3		95mm Ø	EI 90 U/C
82	82	2.4 – 5.1	4		102mm Ø	EI 90 U/C
90	90	2.5 – 5.6	4		110mm Ø	EI 90 U/C
110	110	4.2 – 6.6	4		130mm Ø	EI 90 U/C
125	125	4.3 – 7.6	5		145mm Ø	EI 90 U/C
140	140	4.5 – 8.4	6		160mm Ø	EI 90 U/C
160	160	4.7 – 9.5	7		180mm Ø	EI 120 U/C



Appendix UL-EU CERTIFICATE UL-EU-01359-EN

The UL-EU Marks, displayed below represent the enhanced and alternate version of the product marking. Either Mark can be used. These Marks shall appear on certified products only. Minimum size is not specified, as long as the Mark is legible. The following is suggested.



*Note: E12345 is an example of the UL file number.

The minimum height of the registered trademark symbol ® shall be 1 mm. When the overall diameter of the UL-EU Mark is less than 9.5 mm, the trademark symbol may be omitted if it is not legible to the naked eye.

The UL-EU Mark may appear on a label, nameplate, or may be cast, stamped or molded into the product. When appearing on a label or nameplate, the Manufacturer's name or trademark along with a model number and UL File number are also required on that same label or nameplate. If cast, stamped or molded, the Manufacturer's name or trademark and model number shall also appear elsewhere on the product.

All content shall be in accordance with the details provided on this UL-EU Certificate.

PROCUREMENT

The Production site may reproduce the Mark or obtain it from a UL authorized supplier. The list of UL authorized suppliers can be found on UL's online directory at www.ul.com.

