

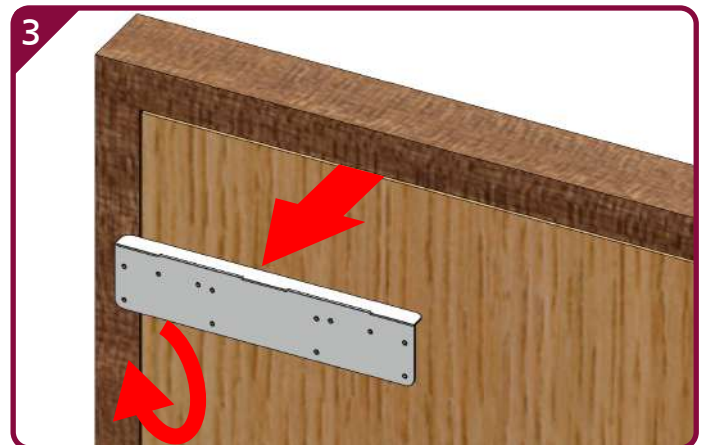
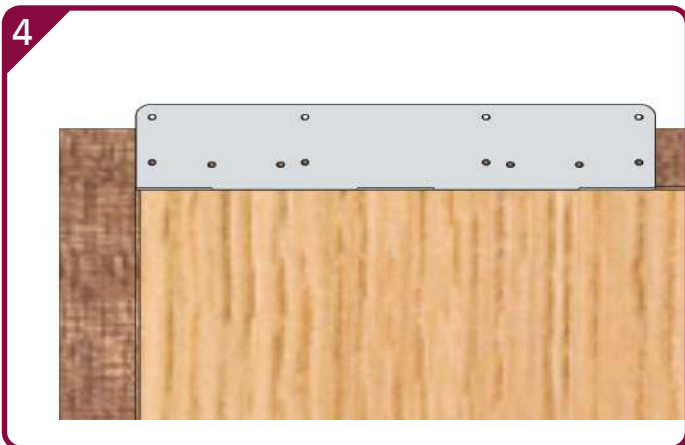
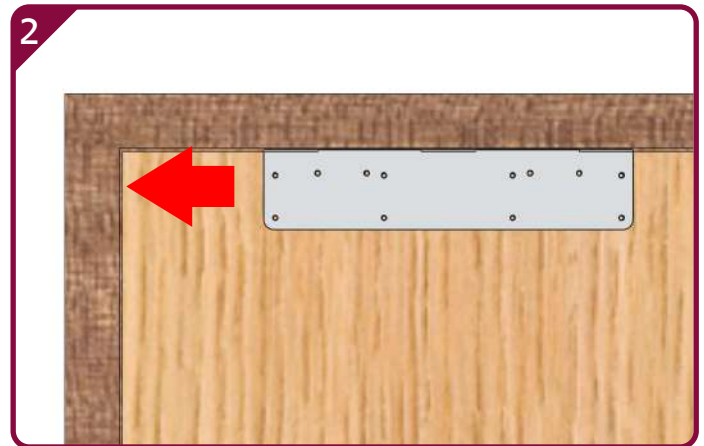
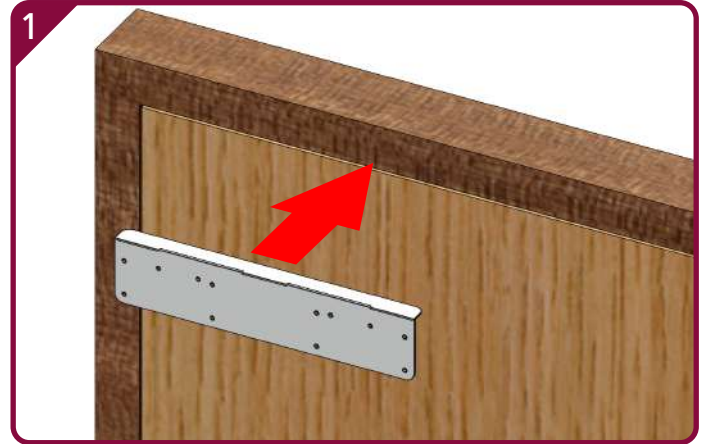
# Fixing Jig for TS.9205 Pull side

Suitable for door thickness 44-54mm, Left & Right hand door

## Fitting Instruction

TEL: +44 (0) 1246 261 491 | www.rutlanduk.co.uk

1. Insert the jig into the door gap.(Fig 1)
2. Slide the jig along the gap until it is firmly positioned against the corner of the door frame. (Fig 2)
3. Drill pilot holes for the 4 x scissor arm/  
3 x slide arm closer body fixing holes according to the door handing:
  - Use the holes marked RH for a right-hand door.
  - Use the holes marked LH for a left-hand door.
4. Remove the jig and rotate it upside down. (Fig 3)
5. Repeat steps 1 and 2 on the opposite side.
6. Pre-drill the 2 x closer arm shoe/rail fixing holes according to the door handing: (Fig 4)
  - Use the holes marked RH/ RR for a right-hand door.
  - Use the holes marked LH/ LR for a left-hand door.



### Additional Information

Maintenance - Use a moist cloth only, as household abrasives or solvents may affect surface finish - lubrication may occasionally be required.

Suitable for 44mm-54mm door thickness